

FILED NO. 003279
 BOOK 2 PAGE 137
 2000 MAR -7 PM 3:20

REC \$ 5⁰⁰
 AUD \$ _____
 R.M.F. \$ 1⁰⁰
 COMPUTER
 RECORDED
 COMPARED

MICHELLE UTSLER
 RECORDER
 MADISON COUNTY, IOWA

Prepared By: J. Brian Morrissey, Morrissey Surveying, 1405 Hwy G28 Otley, Iowa 50214-8518, 515-627-5554

UNITED STATES PUBLIC LAND SURVEY CORNER CERTIFICATE OF

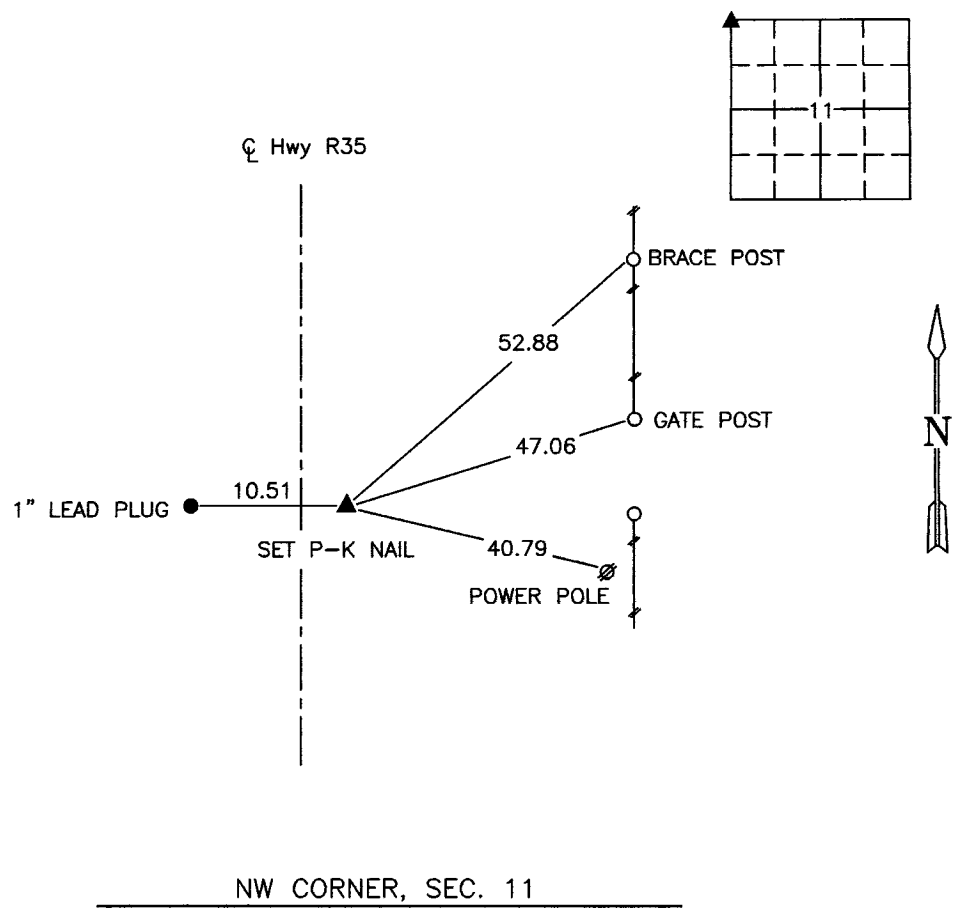
Land Survey Monuments situated in Section 11, Township 74 N, Range 26 W, of the Fifth Principal Meridian, Madison County, Iowa.
 Previously recorded in N.A. in County Recorders Office.
 (book, page, document number, etc.)

(Show reason for preparing this certificate, the evidence and detailed procedures used in establishing the corner positions and monumentation found or placed.)

Monument Description and Remarks: Set P.K. nail in pavement 10.51 feet east of lead plug on tangent of Hwy R35 based on Madison County Engineer's Office right-of-way acquisition documents.

PLAN VIEW

(Show a minimum of three reference ties to durable physical objects, relevant monuments and physical conditions that will enable recovery of the corner.)



NOTE: ALL TIES TO "X" NAILS UNLESS NOTED.



I hereby certify that the survey work was completed and this certificate was prepared by me or under my direct personal supervision and that I am a duly Licensed Land Surveyor under the laws of the State of Iowa.

Signature: J. Brian Morrissey Date: 3/6/00
 J. Brian Morrissey

License number 7995.
 My license renewal date is December 31, 2001.