

REC \$ 5⁰⁰
AUD \$
P.M.F. \$

COMPUTER
RECORDED
COMPARED

RETURN TO : BOLDMAN LAND SURVEYING, P.C., BOX 66, WINTERSET, IA 50273 515-462-9242
UNITED STATES PUBLIC LAND SURVEY CORNER CERTIFICATE

OF
Land Survey Monuments situated in Section 22, Township 76, Range 28, of the Fifth Principal Meridian, Madison County, Iowa
Previously recorded in None in County Recorder's Office.
(book, page, document number, etc.)

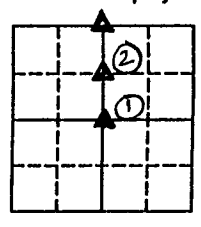
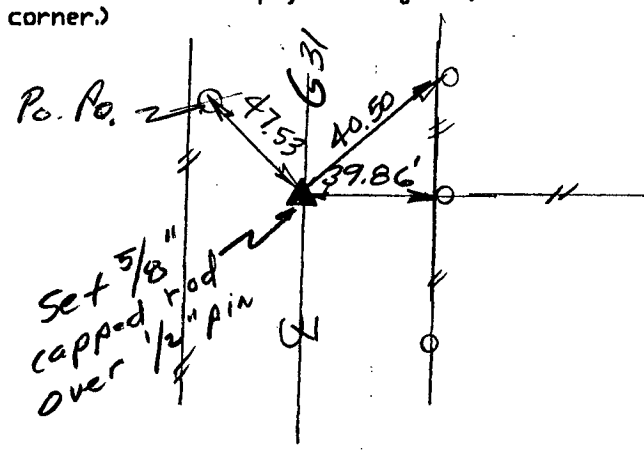
(show reason for preparing this certificate, the evidence and detailed procedures used in establishing the corner positions and monumentation found or placed.)

Monument Description and Remarks: ① Found 1/2" pin 24" deep, no stone found
② Found 1/2" bolt 20" deep. Agrees with fence east
nearly splits 1/2 mile when meas. between found
monuments.

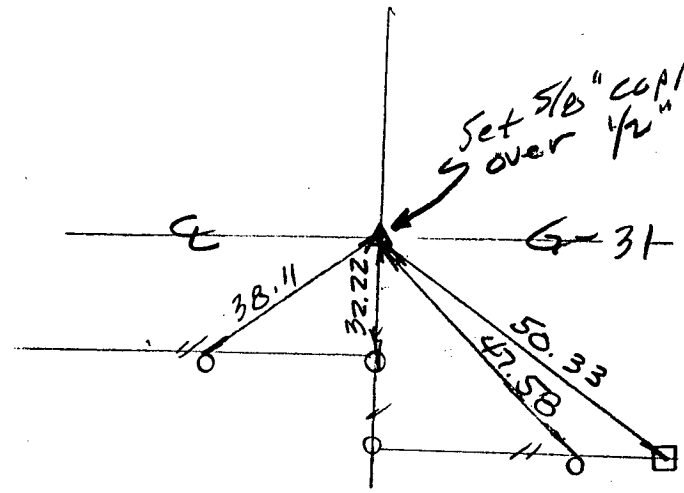
PLAN-VIEW

(Show a minimum of three reference ties to durable physical objects, relevant monuments and physical conditions that will enable recovery of the corner.)

All X-nails



REF. NE COR. SE 1/4 NW 1/4 SEC 22-76-28



REF. SE COR. NW 1/4 SEC 22-76-28

I hereby certify that the survey work was completed and this certificate was prepared by me or under my direct personal supervision and that I am a duly Licensed Land Surveyor under the laws of the State of Iowa

Signature: Craig S. Boldman
Craig S. Boldman

Date: 2/1/00 Reg. No. 13427

List Corners to be Indexed

Corners	Section	Twp	Range
NE SE 1/4 NW 1/4	22	76	28
SE NW 1/4	22	76	28

SEAL

