

REC \$ 5.00
AUD \$ _____
R.M.F. \$ 1.00

FILED NO. 002683
BOOK 2 PAGE 128

2000 JAN 18 PM 12:45

COMPUTER
RECORDED
COMPARED

MICHELLE UTSLER
RECORDER
MADISON COUNTY, IOWA

✓ VANCE & HOCHSTETLER, P.C., CONSULTING ENGINEERS, WINTERSSET, IOWA (515) 462-3995
CHARLES T. VANCE, 110 West Green St., Winterset, Iowa, 50273
JAMES M HOCHSTETLER, 110 West Green St., Winterset, Iowa 50273

UNITED STATES PUBLIC LAND SURVEY CORNER CERTIFICATE

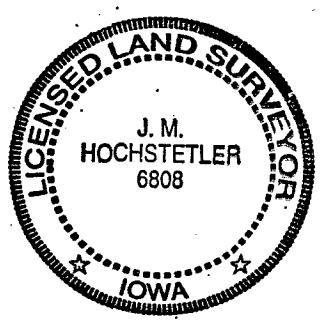
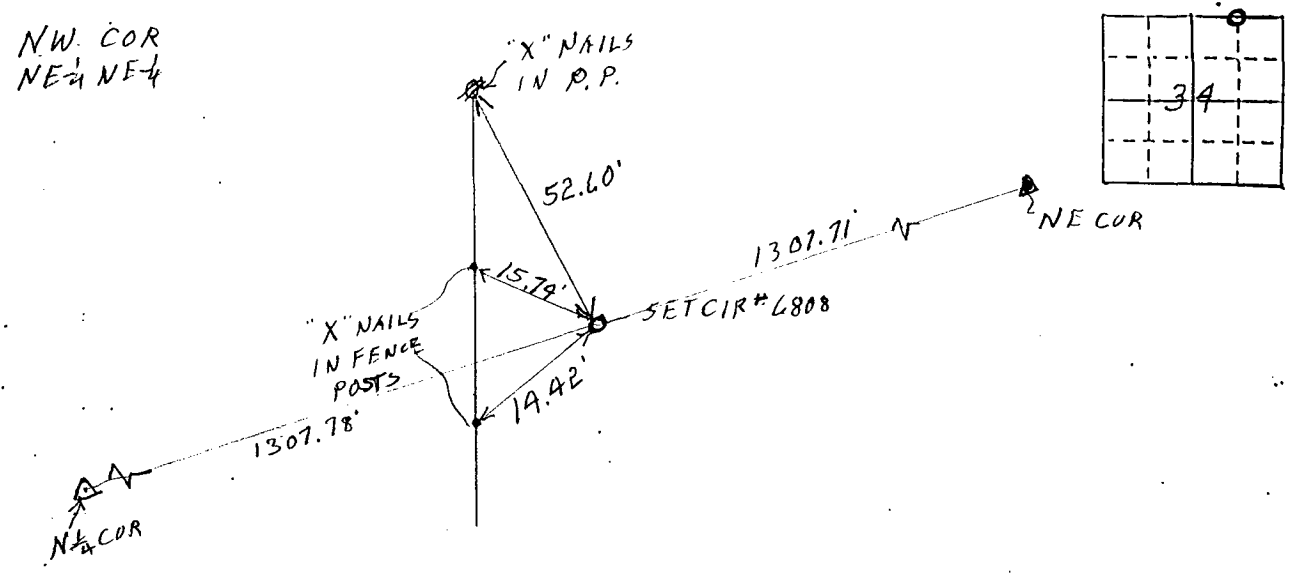
Land Survey Monuments situated in Section 34 OF 34 Township 76 N Range 26 W of the Fifth Principal Meridian, MADISON County, Iowa.
Previously recorded in _____ in County Recorder's Office.
(book, page, document number, etc.)

(Show reason for preparing this certificate, the evidence and detailed procedures used in establishing the the corner positions and monumentation found or placed.)

Monument Description and Remarks: NW COR. NE 1/4 NE 1/4 - SET CIR #6808
ON LINE BETWEEN FOUND N 1/4 COR. & NE COR. OF SAID SECTION
34 AT INTERSECTION OF LINE THROUGH IOWA DOT. ROW. MARKER
FOUND AT THE BEARING USED BY IOWA DOT. AS WEST LINE OF
SE 1/4 SE 1/4 SECTION 27. POINT IS VERY CLOSE TO MID POINT
BETWEEN N 1/4 & NE COR OF SECTION 34.

PLAN - VIEW

(Show a minimum of three reference ties to durable physical objects, relevant monuments and physical conditions that will enable recovery of the corner.)



I hereby certify that this land surveying document was prepared and the related survey work was performed by me or under my direct personal supervision and that I am a duly licensed Land Surveyor under the laws of the State of Iowa.
J. M. Hochstetler
J. M. HOCHSTETLER
License number 6808 Date 1/17/2000
My license renewal date is December 31, 2001.
Pages or sheets covered by this seal: 1

List Corners to be Indexed

Corners	Section	Twp	Range
NW COR. NE 1/4 NE 1/4	34	76 N	26 W