

REG. 5.00
AUDS. _____
F.M.F.S. 1.00

COMPUTER
RECORDED
COMPARED

VANCE & HOCHSTETLER, P.C., CONSULTING ENGINEERS, WINTERSSET, IOWA (515) 462-3995
CHARLES T. VANCE, 110 West Green St., Winterset, Iowa, 50273
JAMES M HOCHSTETLER, 110 West Green St., Winterset, Iowa 50273

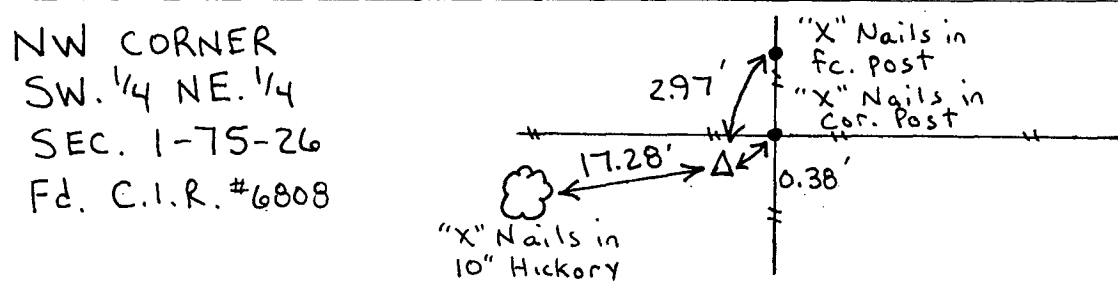
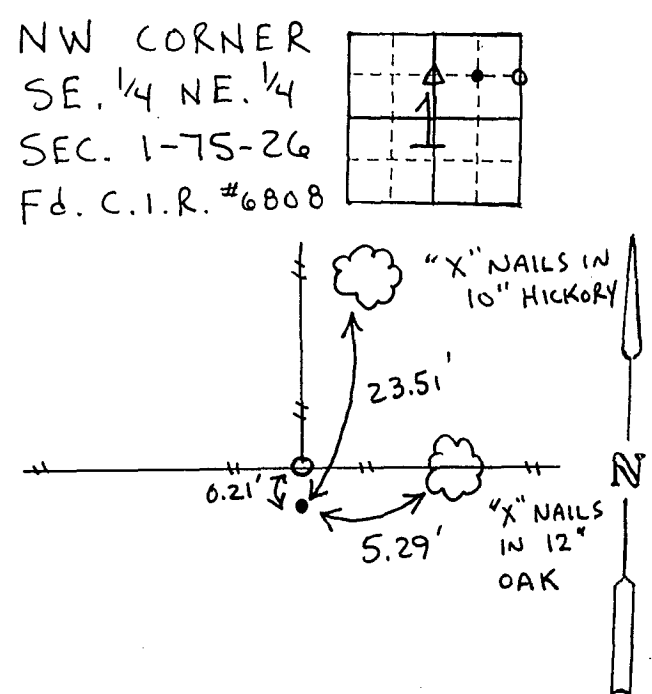
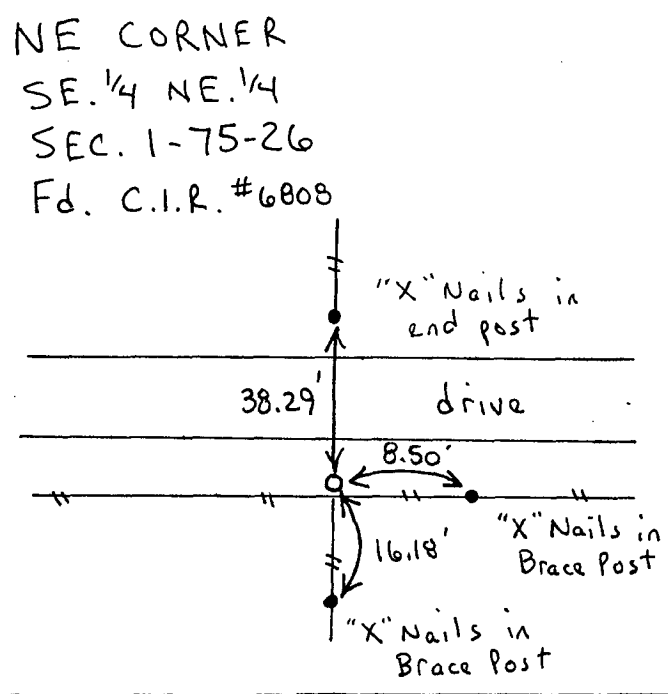
UNITED STATES PUBLIC LAND SURVEY CORNER CERTIFICATE

OF _____
Land Survey Monuments situated in Section 1, Township 75 North, Range 26 West, of the Fifth Principal Meridian, MADISON County, Iowa.
Previously recorded in _____ in County Recorder's Office.
(book, page, document number, etc.)

(Show reason for preparing this certificate, the evidence and detailed procedures used in establishing the the corner positions and monumentation found or placed.)

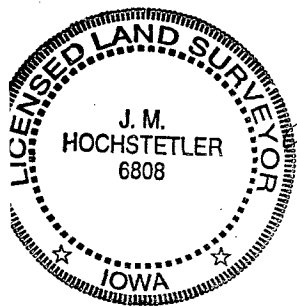
Monument Description and Remarks:
NE cor. SE. 1/4 NE. 1/4 - Fd. Capped Iron Rod #6808 (1/2" rebar, exposed, set in 1995) at 3-way fence corner.
NW cor. SE. 1/4 NE. 1/4 - Fd. C.I.R. #6808 (1/2" rebar, exposed, set in 1995) at 3-way fence corner
NW cor. SW. 1/4 NE. 1/4 - Fd. C.I.R. #6808 (1/2" rebar, exposed, set in 1998) at existing 4-way fence corner.
PLAN - VIEW

(Show a minimum of three reference ties to durable physical objects, relevant monuments and physical conditions that will enable recovery of the corner.)



I hereby certify that this land surveying document was prepared and the related survey work was performed by me or under my direct personal supervision and that I am a duly licensed Land Surveyor under the laws of the State of Iowa.

J.M. Hochstetler
J.M. HOCHSTETLER
License number 6808 Date 4/15/2000
My license renewal date is December 31, 2001.
Pages or sheets covered by this seal: 1



List Corners to be Indexed

Corners	Section	Twp	Range
NE cor.	1	75N	26W
SE. 1/4 NE. 1/4			
NW cor.	1	75N	26W
SE. 1/4 NE. 1/4			
NW cor.	1	75N	26W
SW. 1/4 NE. 1/4			