

COMPUTER FILED NO. **002189**
 RECORDED
 COMPARED BOOK 2 PAGE 118
 REC'D None 1999 DEC -7 PM 3:19
 AUD \$ _____
 R.M.F. \$ _____

MICHELLE UTSLER
 RECORDER
 MADISON COUNTY, IOWA

Prepared By: Michael James Hackett, Madison County Engineer's Office, Courthouse, P.O. Box 152, Winterset, Ia. 50273, Tel. (515) 462-11366

UNITED STATES PUBLIC LAND SURVEY CORNER CERTIFICATE OF

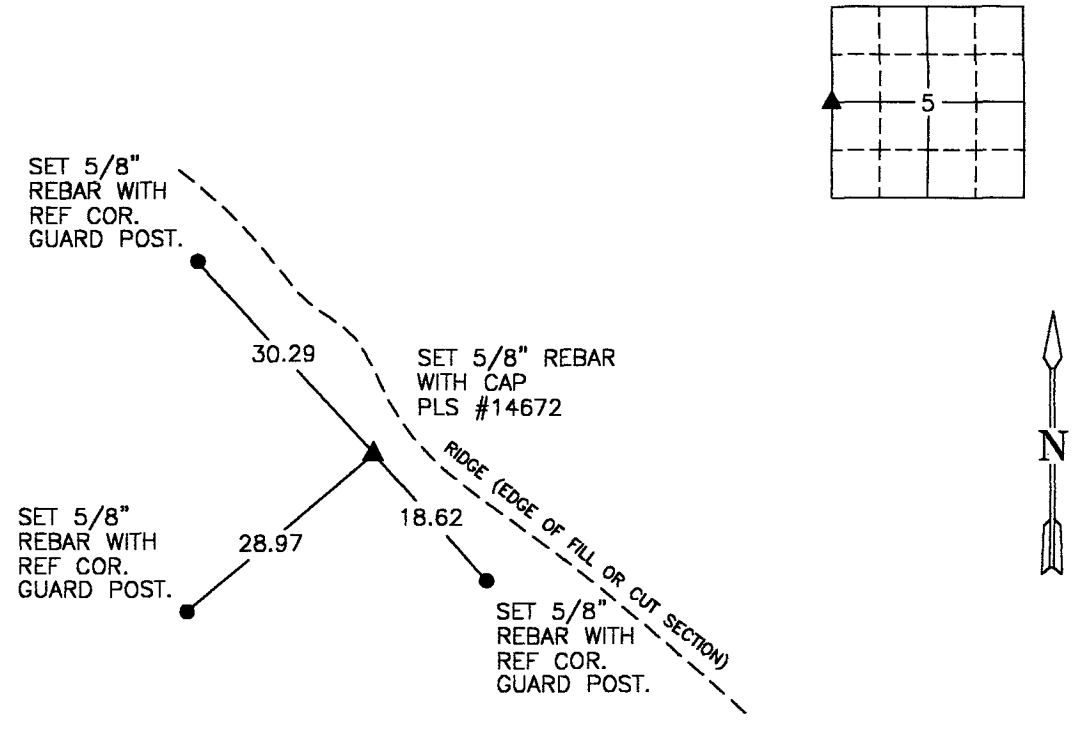
Land Survey Monuments situated in Section 5, Township 75 N, Range 27 W, of the Fifth Principal Meridian, Madison County, Iowa.
 Previously recorded in Book 2, Page 63 in County Recorders Office.
 (book, page, document number, etc.)

(Show reason for preparing this certificate, the evidence and detailed procedures used in establishing the corner positions and monumentation found or placed.)

Monument Description and Remarks: Set 5/8" capped rebar, PLS # 14672. Position based on single proportionate measure from the southwest corner of the Southwest Quarter to the northwest corner of the Northwest Quarter. Note that the 1961 and 1993 air photos in the Madison County Engineer's Office shows that the area was stripped mined for a number of years and that the corner was lost.
Recertified due to typographical error in monument description and remarks.

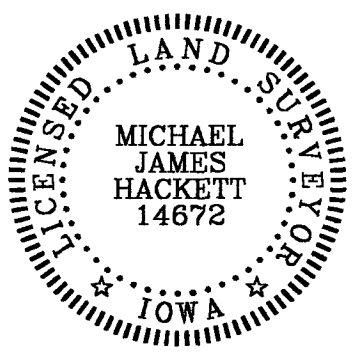
PLAN VIEW

(Show a minimum of three reference ties to durable physical objects, relevant monuments and physical conditions that will enable recovery of the corner.)



NW. COR., SW. 1/4, SEC. 5

NOTE: ALL TIES TO "X" NAILS UNLESS NOTED



I hereby certify that this land surveying document was prepared and the related survey work was performed by me or under my direct personal supervision and that I am a duly Licensed Land Surveyor under the laws of the State of Iowa.

Signed Michael James Hackett Date 12-7-99
 Michael James Hackett Iowa Lic. No. 14672
 My license renewal date is 12/31/2000.
 Pages covered by this seal: 1.