

COMPUTER
RECORDED
COMPARED

REC \$
AUD \$
R.M.F. \$

FILED NO. 002187

BOOK 2 PAGE 116

1999 DEC -7 PM 3: 17

ROHELLE UTSLER
RECORDER
MADISON COUNTY IOWA

Prepared By: Michael James Hackett, Madison County Engineer's Office, Courthouse, P.O. Box 152, Winterset, Ia. 50273-0152

UNITED STATES PUBLIC LAND SURVEY CORNER CERTIFICATE OF

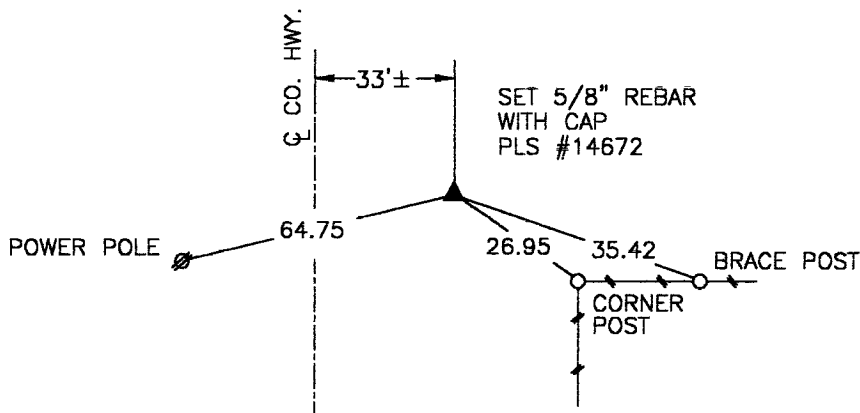
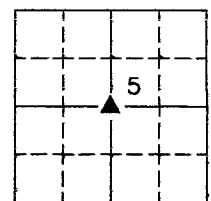
Land Survey Monuments situated in Section 5, Township 75 N, Range 27 W, of the Fifth Principal Meridian, Madison County, Iowa.
Previously recorded in Book 2, Page 61 in County Recorders Office.
(book, page, document number, etc.)

(Show reason for preparing this certificate, the evidence and detailed procedures used in establishing the corner positions and monumentation found or placed.)

Monument Description and Remarks: Set 5/8" capped rebar, PLS # 14672. Position based on calculated intersection from the southwest corner of the Southeast Quarter to the northeast corner of the Northwest Quarter and from the northwest corner of the Southwest Quarter to the northeast corner of the Southeast Quarter.
Recertified due to typographical error in monument description and remarks.

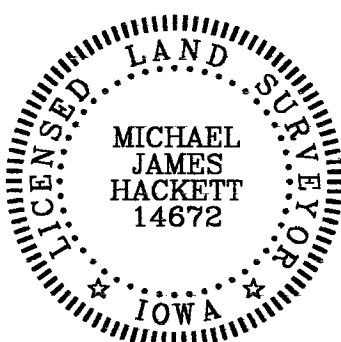
PLAN VIEW

(Show a minimum of three reference ties to durable physical objects, relevant monuments and physical conditions that will enable recovery of the corner.)



NE. COR., SW. 1/4, SEC. 5

NOTE: ALL TIES TO "X" NAILS UNLESS NOTED



I hereby certify that this land surveying document was prepared and the related survey work was performed by me or under my direct personal supervision and that I am a duly Licensed Land Surveyor under the laws of the State of Iowa.

Signed Michael James Hackett Date 12-7-99

Michael James Hackett Iowa Lic. No. 14672

My license renewal date is 12/31/2000.

Pages covered by this seal: 1.

SBRC-61(44)-5