

COMPUTER
RECORDED
COMPALED

REC: *[Signature]* BOOK 2 PAGE 115
AUD: 1999 DEC -7 PM 3:16
R.M.F. \$

NICHELLE UTSLER
RECORDER
50273, TEL: (515) 492-1366

Prepared By: Michael James Hackett, Madison County Engineer's Office, Courthouse, P.O. Box 152, Winterset, Ia. 50273

UNITED STATES PUBLIC LAND SURVEY CORNER CERTIFICATE OF

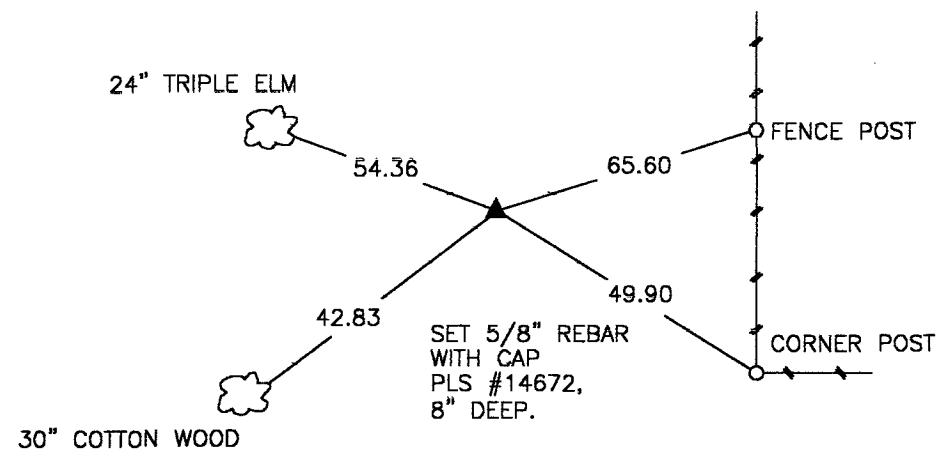
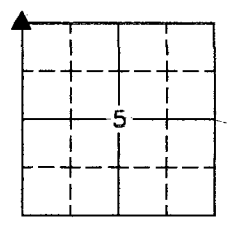
Land Survey Monuments situated in Section 5, Township 75 N, Range 27 W, of the Fifth Principal Meridian, Madison County, Iowa.
Previously recorded in Book 2, Page 60 in County Recorders Office.
(book, page, document number, etc.)

(Show reason for preparing this certificate, the evidence and detailed procedures used in establishing the corner positions and monumentation found or placed.)

Monument Description and Remarks: Set 5/8" capped rebar, PLS # 14672, 8" deep. Reset from section corner ties previously logged in Madison County Engineers Office by Barry A. Bishop P.E. & L.S. Accepted position.
Recertified due to typographical error in monument description and remarks.

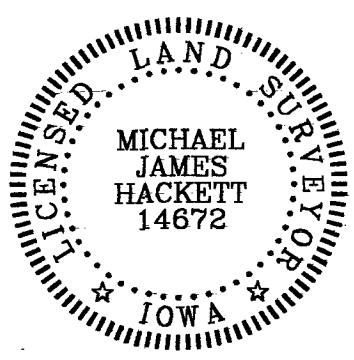
PLAN VIEW

(Show a minimum of three reference ties to durable physical objects, relevant monuments and physical conditions that will enable recovery of the corner.)



NW. COR., NW. 1/4, SEC. 5

NOTE: ALL TIES TO "X" NAILS UNLESS NOTED



I hereby certify that this land surveying document was prepared and the related survey work was performed by me or under my direct personal supervision and that I am a duly Licensed Land Surveyor under the laws of the State of Iowa.

Signed *[Signature]* Date 12-7-99
Michael James Hackett Iowa Lic. No. 14672

My license renewal date is 12/31/2000.
Pages covered by this seal: 1.