

COMPUTER   
RECORDED   
COMPARED \_\_\_\_\_

FILED NO. 002185  
BOOK 2 PAGE 114  
1999 DEC -7 PM 3:15  
MICHELLE UTSLER  
RECORDER  
MADISON COUNTY, IOWA

REC \$ None  
AUD \$ \_\_\_\_\_  
R.M.F. \$ \_\_\_\_\_

Prepared By: Michael James Hackett, Madison County Engineer's Office, Courthouse, P.O. Box 152, Winterset, Ia. 50273, Tel. (515) 462-11366

# UNITED STATES PUBLIC LAND SURVEY CORNER CERTIFICATE OF

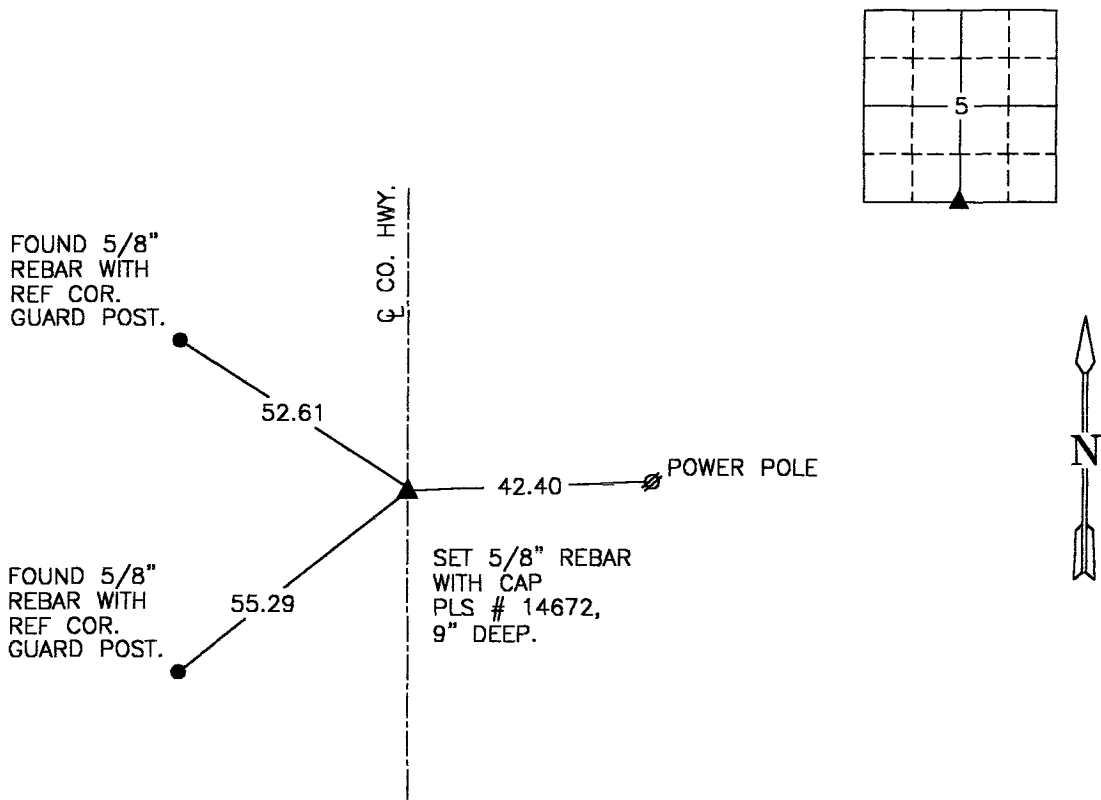
Land Survey Monuments situated in Section 5, Township 75 N, Range 27 W, of the Fifth Principal Meridian, Madison County, Iowa.  
Previously recorded in Book 2, Page 58 in County Recorders Office.  
(book, page, document number, etc.)

(Show reason for preparing this certificate, the evidence and detailed procedures used in establishing the corner positions and monumentation found or placed.)

Monument Description and Remarks: Set 5/8" capped rebar, PLS # 14672, 9" deep. Reset from section corner ties previously recorded in the Madison County Recorders Office. Accepted position. The section corner was disturbed due to the highway construction. Recertified due to a change in the type of monument.

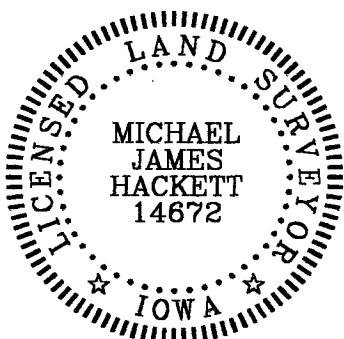
## PLAN VIEW

(Show a minimum of three reference ties to durable physical objects, relevant monuments and physical conditions that will enable recovery of the corner.)



SW. COR., SE. 1/4, SEC. 5

NOTE: ALL TIES TO "X" NAILS UNLESS NOTED



I hereby certify that this land surveying document was prepared and the related survey work was performed by me or under my direct personal supervision and that I am a duly Licensed Land Surveyor under the laws of the State of Iowa.

Signed Michael James Hackett Date 12-7-99  
Michael James Hackett Iowa Lic. No. 14672

My license renewal date is 12/31/2000.  
Pages covered by this seal: 1.

SBRC-61(44)-2A