

UNITED STATES PUBLIC LAND SURVEY CORNER CERTIFICATE

OF

Land Survey Monuments situated in Section 10, Township 77N, Range 28W, of the Fifth Principal Meridian, MADISON County, Iowa. Previously recorded in _____ in County Recorder's Office.

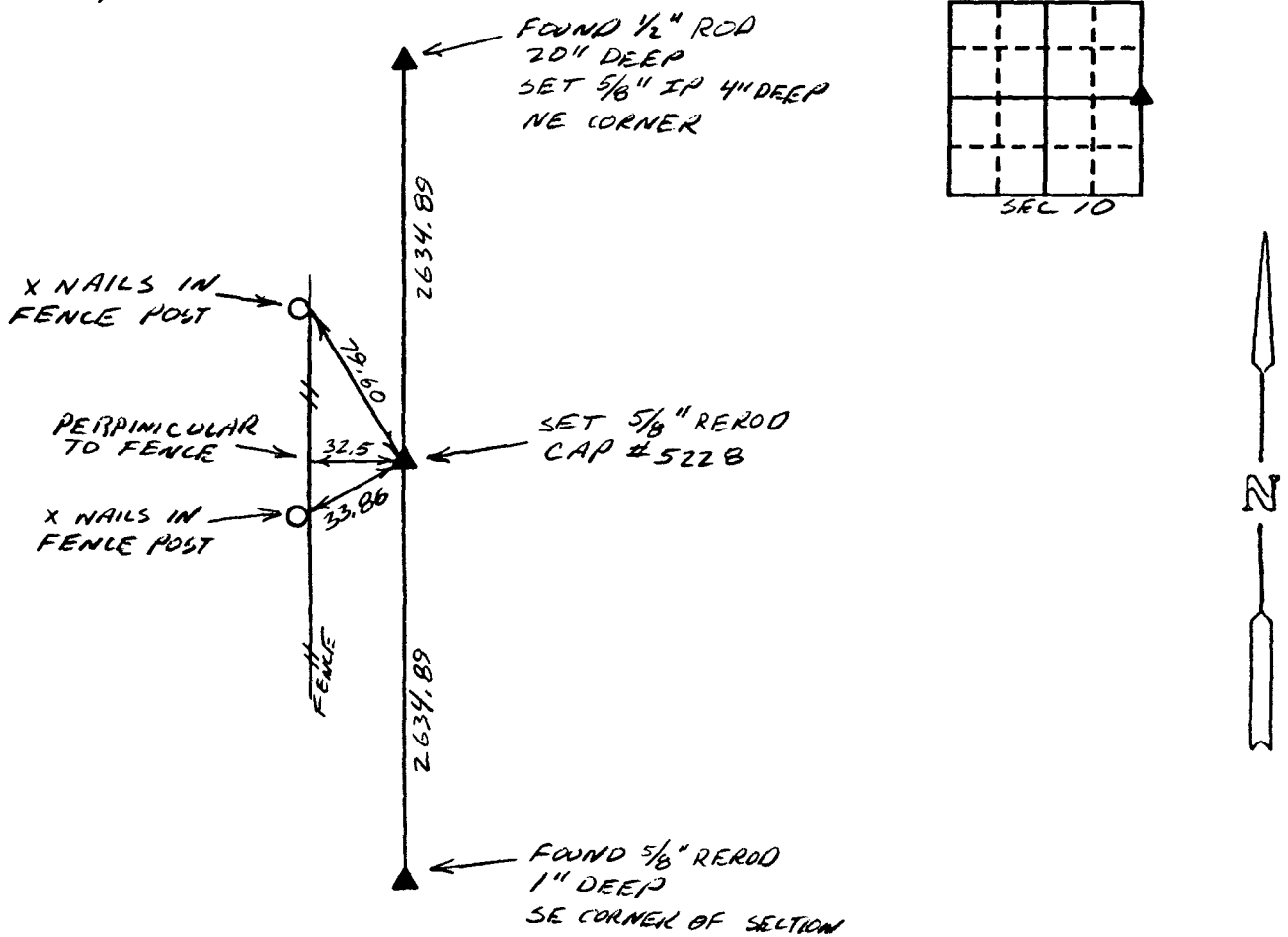
(book, page, document number, etc.)

(Show reason for preparing this certificate, the evidence and detailed procedures used in establishing the corner positions and monumentation found or placed.)

Monument Description and Remarks: NO TIES ON RECORD FOR CORNER.
SET 5/8" REROD WITH CAP #5228, 3" DEEP IN GRAVEL ROAD.
SET ON LINE BETWEEN NORTHEAST CORNER AND SOUTHEAST
CORNER OF SECTION. POINT IS EQUIDISTANT FROM NORTHEAST
AND SOUTHEAST CORNERS OF SECTION

PLAN - VIEW

(Show a minimum of three reference ties to durable physical objects, relevant monuments and physical conditions that will enable recovery of the corner.)



I hereby certify that the survey work was completed and this certificate was prepared by me or under my direct personal supervision and that I am a duly registered land surveyor under the laws of the state of Iowa.

Signature: [Signature]

Name typed or printed: BEL PIAGENTINI

Date: 11-30-99 Reg. No. 5228

Corners	List Corners to be Indexed Section	Twp	Range
E 1/4	10	77N	28W
W 1/4	11	77N	28W

REC \$ 5.00
AUD \$ _____
R.M.F. \$ 1.00

FILED NO. 002087
BOOK 2 PAGE 110
1999 NOV 30 PM 12:55

COMPUTER
RECORDED
COMPARED

SHELLE UTSLER
RECORDER
MADISON COUNTY, IOWA

SEAL

