

UNITED STATES PUBLIC LAND SURVEY CORNER CERTIFICATE

OF

Land Survey Monuments situated in Section 9, Township 77 N, Range 29 W, of the Fifth Principal Meridian, MADISON County, Iowa. Previously recorded in _____ in County Recorder's Office.

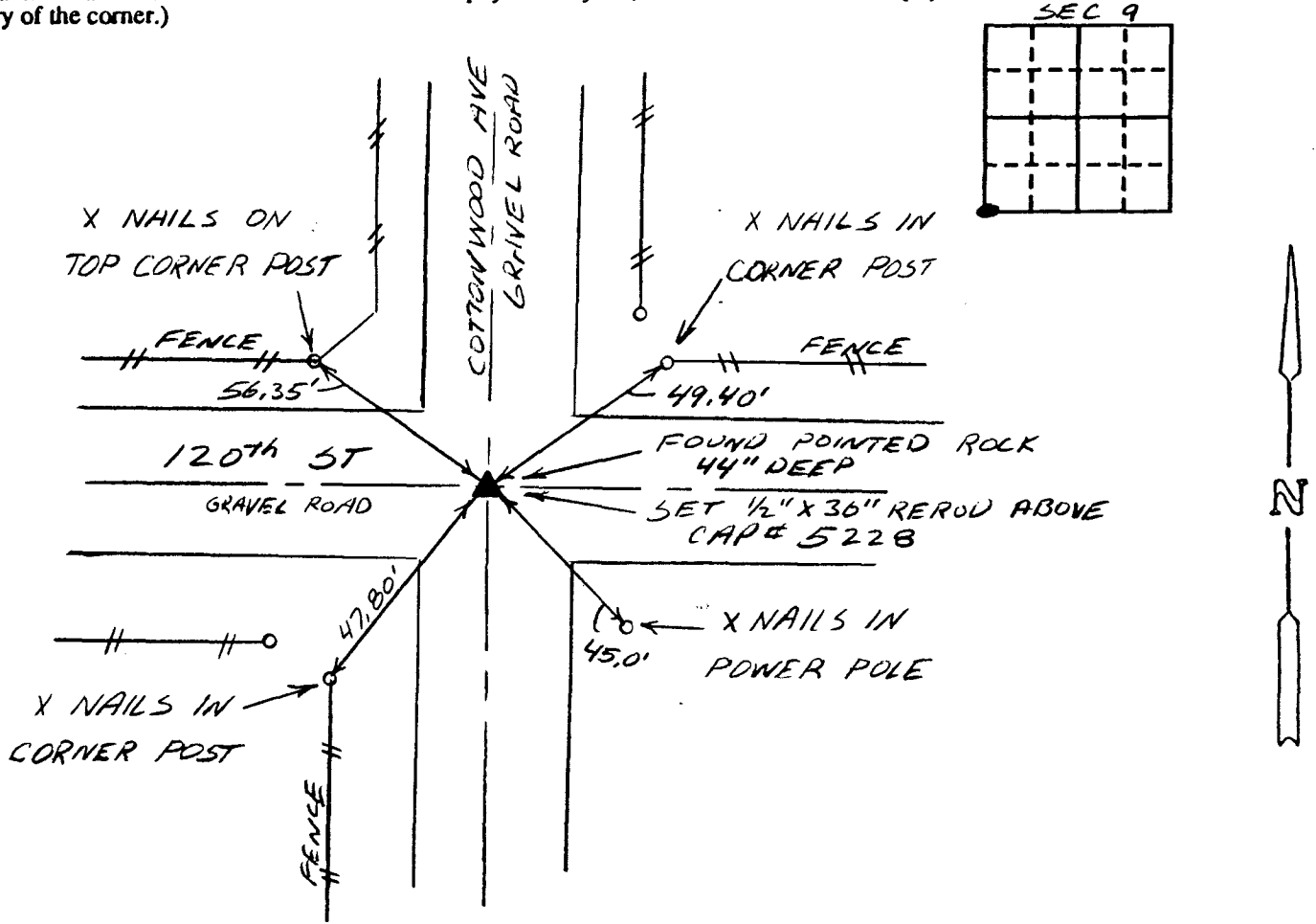
(book, page, document number, etc.)

(Show reason for preparing this certificate, the evidence and detailed procedures used in establishing the corner positions and monumentation found or placed.)

Monument Description and Remarks: FOUND POINTED ROCK 44 INCHES DEEP.
SET 1/2" X 36" REROD W/ CAP 5228 ABOVE. PREVIOUS TIES
FOR SEC 17-77N-29W INDICATE STONE FOUND ON
6-8-55, THESE TIES ARE GONE.

PLAN - VIEW

(Show a minimum of three reference ties to durable physical objects, relevant monuments and physical conditions that will enable recovery of the corner.)



I hereby certify that the survey work was completed and this certificate was prepared by me or under my direct personal supervision and that I am a duly registered land surveyor under the laws of the state of Iowa.

Signature: [Signature]
 Name typed or printed: DEL PIAGENTINI
 Date: 11-30-99 Reg. No. 5228

Corners	Section	Twp	Range
NE COR.	17	77	29
SE COR	8	77	29
NW COR	16	77	29

SW 9 77 29

REC \$ 5⁰⁰
 AUD \$ _____
 R.M.F. \$ 1⁰⁰

COMPUTER
 RECORDED
 COMPARED

FILED NO. 002086
 BOOK 2 PAGE 109
 1999 NOV 30 PM 12: 54
 LHELLE UTSLER
 RECORDER
 MADISON COUNTY, IOWA



SEAL