

REC \$ 5.00
AUD \$ _____
R.M.F. \$ 1.00

FILED NO. 002345
BOOK 2 PAGE 125
1999 DEC 21 PM 3:35

COMPUTER
RECORDED
COMPARED

WELLS UTSLER
RECORDER
482-3995
IOWA

VANCE & HOCHSTETLER, P.C., CONSULTING ENGINEERS, WINTERSSET, IOWA (515) 482-3995
CHARLES T. VANCE, 110 West Green St., Winterset, Iowa, 50273
JAMES M HOCHSTETLER, 110 West Green St., Winterset, Iowa 50273

UNITED STATES PUBLIC LAND SURVEY CORNER CERTIFICATE

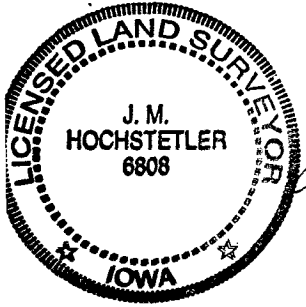
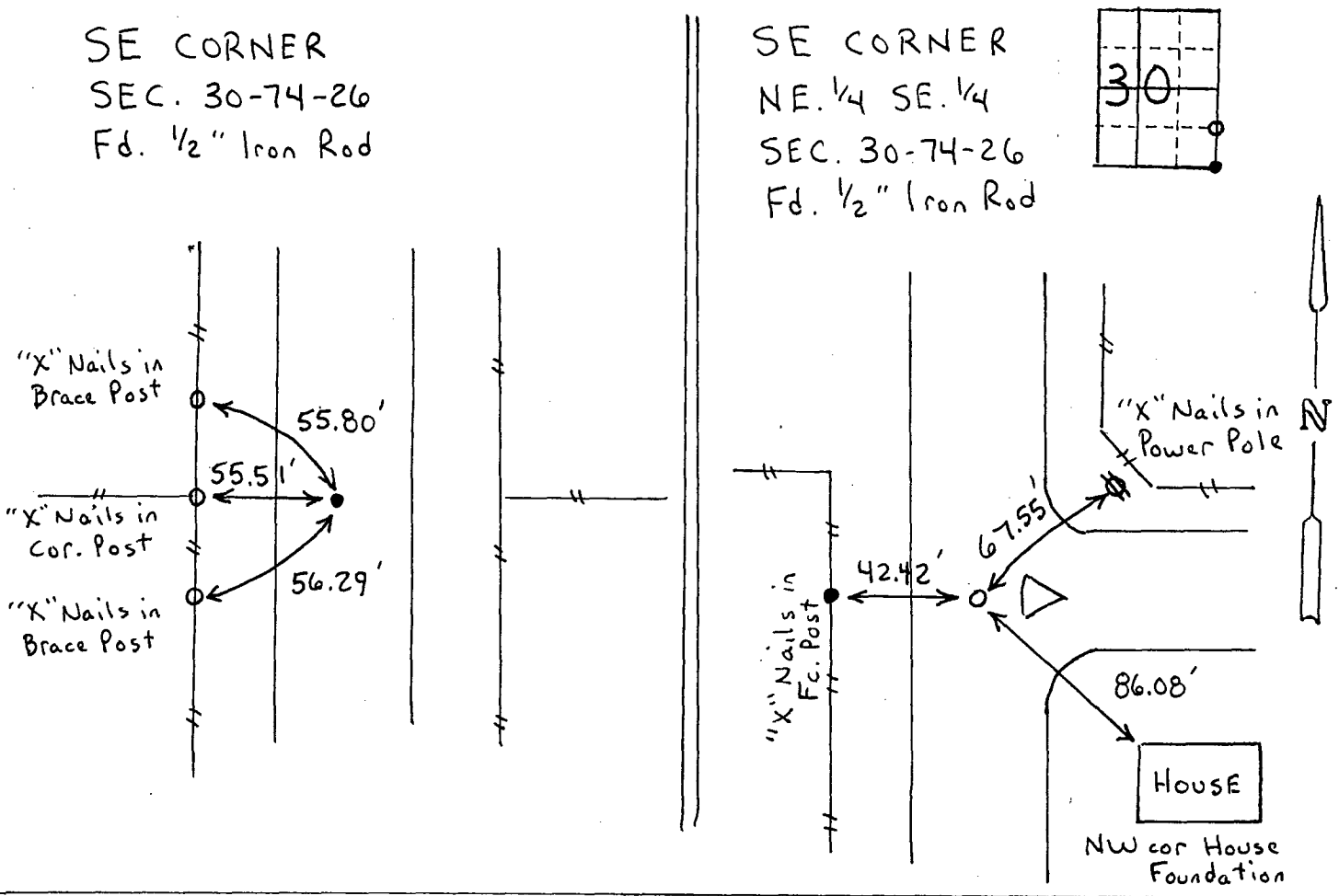
Land Survey Monuments situated in Section 30 OF 30, Township 74 NORTH, Range 26 WEST, of the Fifth Principal Meridian, MAOISON County, Iowa.
Previously recorded in _____ in County Recorder's Office.
(book, page, document number, etc.)

(Show reason for preparing this certificate, the evidence and detailed procedures used in establishing the the corner positions and monumentation found or placed.)

Monument Description and Remarks:
SE cor. - Fd. 1/2" Iron Rod, 12" deep, in roadway
SE cor. NE. 1/4 SE. 1/4 - Fd. 1/2" Iron Rod, 20" deep, at "T" intersection of County Roads.

PLAN - VIEW

(Show a minimum of three reference ties to durable physical objects, relevant monuments and physical conditions that will enable recovery of the corner.)



I hereby certify that this land surveying document was prepared and the related survey work was performed by me or under my direct personal supervision and that I am a duly licensed Land Surveyor under the laws of the State of Iowa.
J. M. Hochstetler
J. M. HOCHSTETLER
License number 6808 Date 12/14/99
My license renewal date is December 31, 1999.
Pages or sheets covered by this seal: 1

List Corners to be Indexed			
Corners	Section	Twp	Range
SE cor.	30	74N	26W
SE cor. NE. 1/4 SE. 1/4	30	74N	26W