

REC \$ 5.00  
AUD \$  
R.M.F. \$ 1.00

FILED NO. 002342  
BOOK 2 PAGE 122  
1999 DEC 21 PM 3:32

COMPUTER ✓  
RECORDED ✓  
COMPARED ✓

NICHOLE UTSLER  
RECORDER  
MADISON COUNTY, IOWA

VANCE & HOCHSTETLER, P.C., CONSULTING ENGINEERS, WINTERSSET, IOWA (515) 462-3995  
CHARLES T. VANCE, 110 West Green St., Winterset, Iowa, 50273  
JAMES M HOCHSTETLER, 110 West Green St., Winterset, Iowa 50273

UNITED STATES PUBLIC LAND SURVEY CORNER CERTIFICATE  
OF

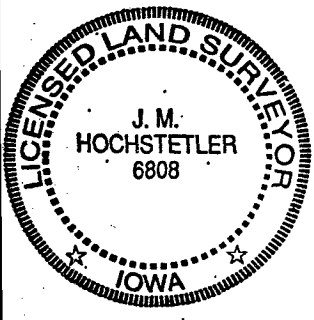
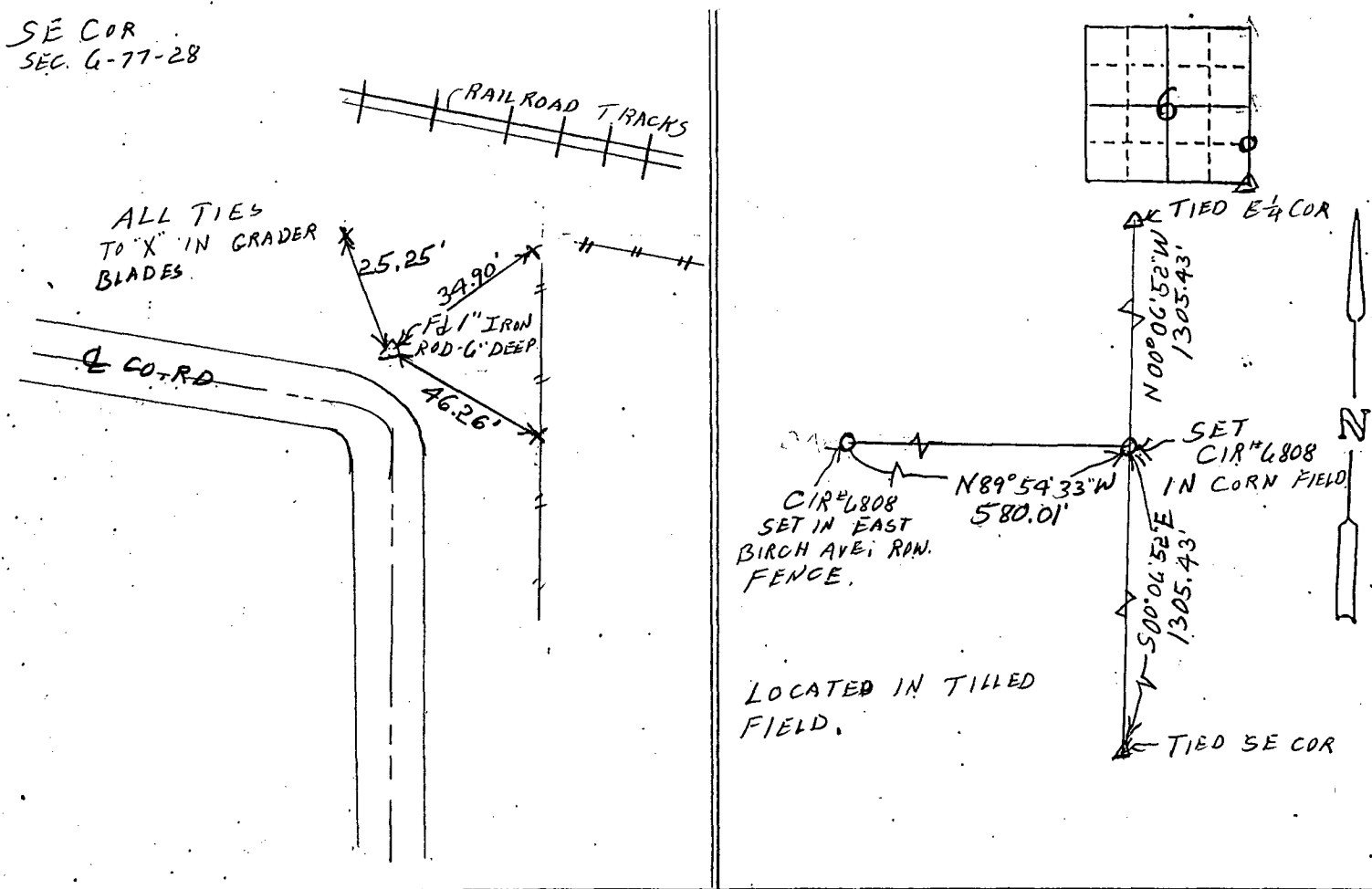
Land Survey Monuments situated in Section 6, Township 77 N, Range 28 W, of the Fifth Principal Meridian, MADISON County, Iowa.  
Previously recorded in \_\_\_\_\_ in County Recorder's Office.  
(book, page, document number, etc.)

(Show reason for preparing this certificate, the evidence and detailed procedures used in establishing the the corner positions and monumentation found or placed.)

Monument Description and Remarks: SE COR - Found 1" Ø IRON ROD PREVIOUSLY TIED BY COUNTY ENGINEER'S OFFICE.  
SE COR. NE ¼ SE ¼ - Set CIR #6808 AT MIDPOINT BETWEEN FOUND E ¼ COR. & S.E. COR. ON LINE.

PLAN - VIEW

(Show a minimum of three reference ties to durable physical objects, relevant monuments and physical conditions that will enable recovery of the corner.)



I hereby certify that this land surveying document was prepared and the related survey work was performed by me or under my direct personal supervision and that I am a duly licensed Land Surveyor under the laws of the State of Iowa.  
J.M. Hochstetler  
J.M. HOCHSTETLER  
License number 6808 Date 11/22/99  
My license renewal date is December 31, 1999  
Pages or sheets covered by this seal: 1

List Corners to be Indexed

Corners	Section	Twp	Range
SE COR.	6	77N	28W
SE COR NE ¼ SE ¼	6	77N	28W