

REC \$ 5⁰⁰
AUD \$
P.M.F. \$ 1⁰⁰

FILED 001916
BOOK 2 PAGE 103
1999 NOV 12 PM 12:40

COMPUTER
RECORDED
COMPARED

MICHELLE UTSLER
RECORDER
MADISON COUNTY, IOWA

VANCE & HOCHSTETLER, P.C., CONSULTING ENGINEERS, WINTERSSET, IOWA (515) 462-3995
CHARLES T. VANCE, 110 West Green St., Winterset, Iowa, 50273
JAMES M HOCHSTETLER, 110 West Green St., Winterset, Iowa 50273

UNITED STATES PUBLIC LAND SURVEY CORNER CERTIFICATE OF

Land Survey Monuments situated in Section 1, Township 75 NORTH, Range 27 WEST, of the Fifth Principal Meridian, MADISON County, Iowa.
Previously recorded in _____ in County Recorder's Office.
(book, page, document number, etc.)

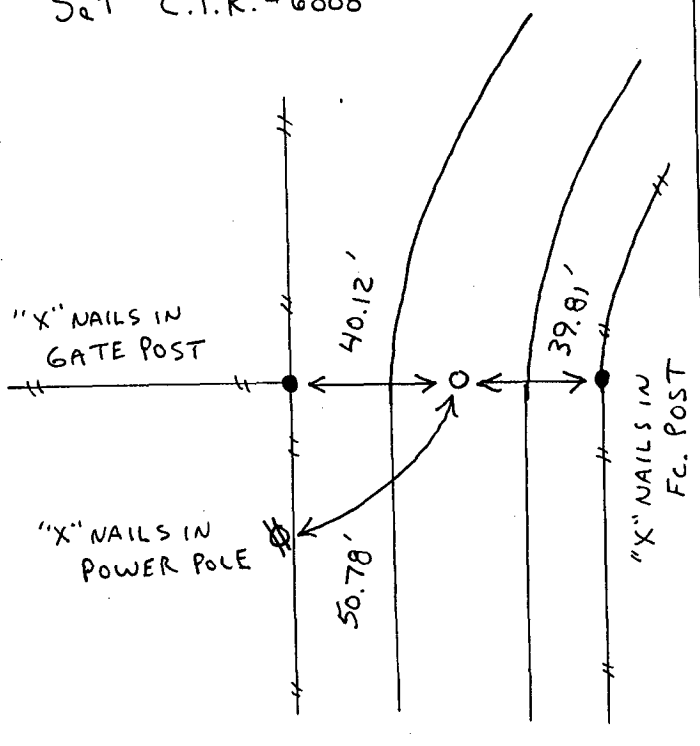
(Show reason for preparing this certificate, the evidence and detailed procedures used in establishing the the corner positions and monumentation found or placed.)

Monument Description and Remarks:
SE cor. NE. Fractional 1/4 NE. 1/4 - Set capped Iron Rod (C.I.R.) #6808
" deep in line with property line fence to West on line between NE
corner & E. 1/4 corner.
SW cor. NE Fractional 1/4 NE. 1/4 - Set C.I.R. #6808 at existing fence
corner.

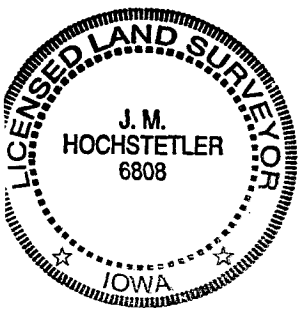
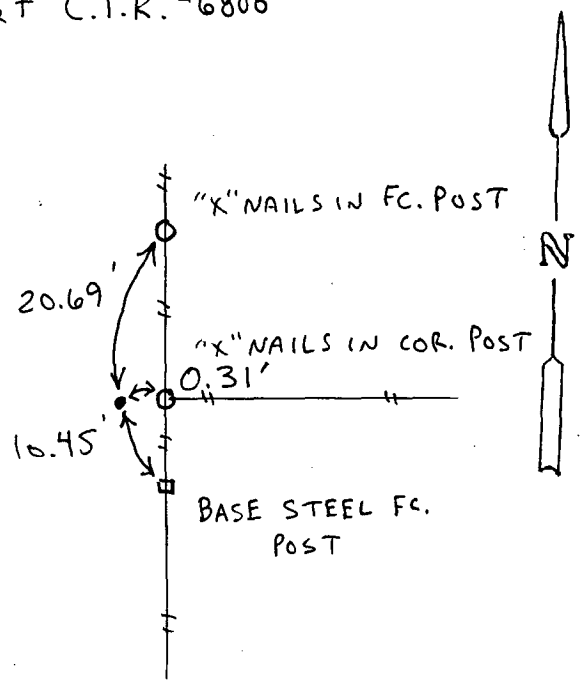
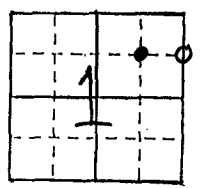
PLAN - VIEW

(Show a minimum of three reference ties to durable physical objects, relevant monuments and physical conditions that will enable recovery of the corner.)

SE CORNER
NE. Fr. 1/4 NE. 1/4
SEC. 1-75-27
Set C.I.R. #6808



SW CORNER
NE. Fr. 1/4 NE. 1/4
SEC. 1-75-27
Set C.I.R. #6808



I hereby certify that this land surveying document was prepared and the related survey work was performed by me or under my direct personal supervision and that I am a duly licensed Land Surveyor under the laws of the State of Iowa.
J.M. Hochstetler
J.M. HOCHSTETLER
License number 6808 Date 11/2/99
My license renewal date is December 31, 1999.
Pages or sheets covered by this seal: 1

List Corners to be Indexed

Corners	Section	Twp	Range
SE cor.	1	75N	27W
NE. Fr. 1/4 NE. 1/4			
SW cor.	1	75N	27W
NE. Fr. 1/4 NE. 1/4			