

REC \$ 5<sup>00</sup>  
AUD \$ \_\_\_\_\_  
R.M.F. \$ 1<sup>00</sup>

FILED NO. 001842  
BOOK 2 PAGE 101  
1999 NOV -5 AM 10:08

COMPUTER   
RECORDED   
COMPARED

JANELLE UTSLER  
RECORDER  
MADISON COUNTY IOWA

PREPARED BY: BOLDMAN LAND SURVEYING, P.C. 521 WEST GREEN STREET, WINTERSET, IA 50273 PH (515)462-9242

### UNITED STATES PUBLIC LAND SURVEY CORNER CERTIFICATE

OF

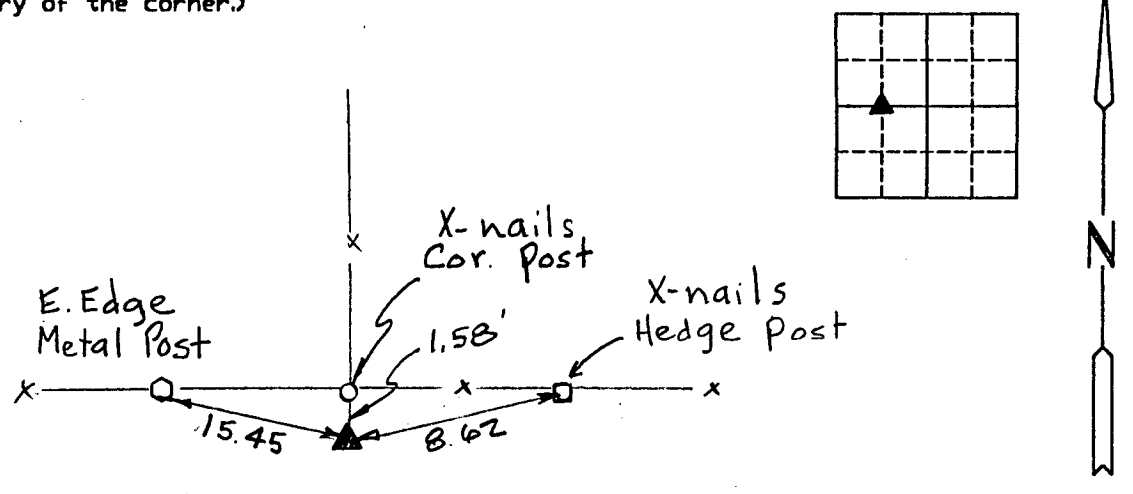
Land Survey Monuments situated in Section 7, Township 76 N, Range 28 W, of the Fifth Principal Meridian, Madison County, Iowa  
Previously recorded in None in County Recorder's Office.  
(book, page, document number, etc.)

(show reason for preparing this certificate, the evidence and detailed procedures used in establishing the corner positions and monumentation found or placed.)

Monument Description and Remarks: Set 5/8" capped pin on line between W 1/4 cor. and Center in line with ancient fence.

### PLAN-VIEW

(Show a minimum of three reference ties to durable physical objects, relevant monuments and physical conditions that will enable recovery of the corner.)



Ref. SW cor. SE 1/4 NW 1/4 Sec. 7-76-28

I hereby certify that the survey work was completed and this certificate was prepared by me or under my direct personal supervision and that I am a duly Licensed Land Surveyor under the laws of the State of Iowa

Signature: Craig S. Boldman  
Craig S. Boldman

Date: 11-5-99 Reg. No. 13427

#### List Corners to be Indexed

Corners	Section	Twp	Range
SW cor. SE 1/4 NW 1/4	7	76	28

SEAL

