

COMPUTER   
RECORDED   
COMPARED

REC \$ 500  
AUD \$ \_\_\_\_\_  
R.M.F. \$ 100

FILED NO. 001530  
BOOK 2 PAGE 97  
99 OCT 15 PM 1:15  
MICHELLE UTSLER  
RECORDER  
MADISON COUNTY, IOWA

PREPARED BY: BOLDMAN LAND SURVEYING, P.C. 521 WEST GREEN STREET, WINTERSSET, IA 50273 PH (515)462-9242

### UNITED STATES PUBLIC LAND SURVEY CORNER CERTIFICATE OF

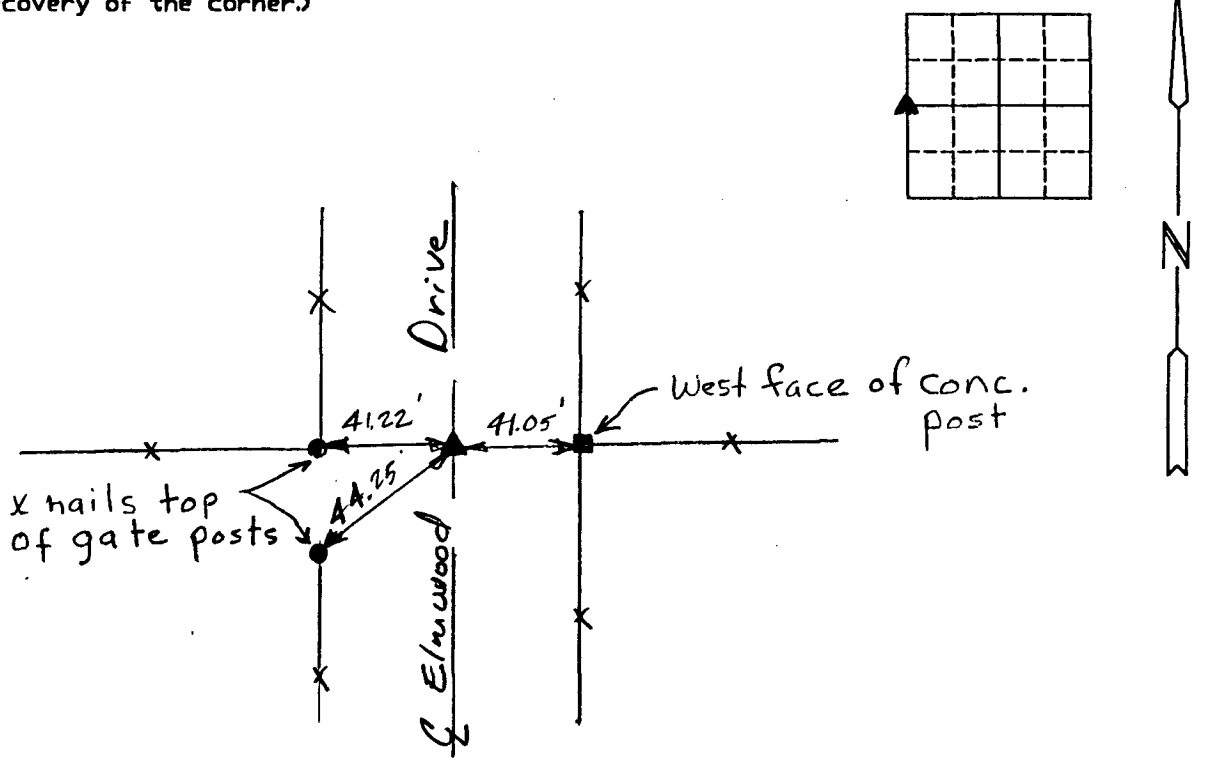
Land Survey Monuments situated in Section 2, Township 75 N, Range 29 W, of the Fifth Principal Meridian, Madison County, Iowa  
Previously recorded in None In County Recorder's Office.  
(book, page, document number, etc.)

(show reason for preparing this certificate, the evidence and detailed procedures used in establishing the corner positions and monumentation found or placed.)

Monument Description and Remarks: Set 5/8" capped rebar in line with fences at split of R.O.W. Co. Engineer records indicates a conc. fence post "east" of section corner.

### PLAN-VIEW

(Show a minimum of three reference ties to durable physical objects, relevant monuments and physical conditions that will enable recovery of the corner.)



Ref. to West 1/4 Corner

I hereby certify that the survey work was completed and this certificate was prepared by me or under my direct personal supervision and that I am a duly Licensed Land Surveyor under the laws of the State of Iowa

Signature: Craig S. Boldman  
Craig S. Boldman

Date: Oct 15, 99 Reg. No. 13427

#### List Corners to be Indexed

Corners	Section	Twp	Range
W 1/4	2	75	29

SEAL

