



001452

FILED NO. _____

BOOK 2 PAGE 96

99 OCT -8 PM 1:58

COMPUTER
RECORDED
COMPARED

REC \$ 500

AUD \$ _____

R.M.F. \$ 100

MICHELLE UTSLER
RECORDER
MADISON COUNTY, IOWA

VANCE & HOCHSTETLER, P.C., CONSULTING ENGINEERS, WINTERSSET, IOWA (515) 462-3995

CHARLES T. VANCE, 110 West Green St., Winterset, Iowa, 50273

JAMES M HOCHSTETLER, 110 West Green St., Winterset, Iowa 50273

UNITED STATES PUBLIC LAND SURVEY CORNER CERTIFICATE

OF

Land Survey Monuments situated in Section 24, Township 77 N., Range 29 W., of the Fifth Principal Meridian, MADISON County, Iowa.

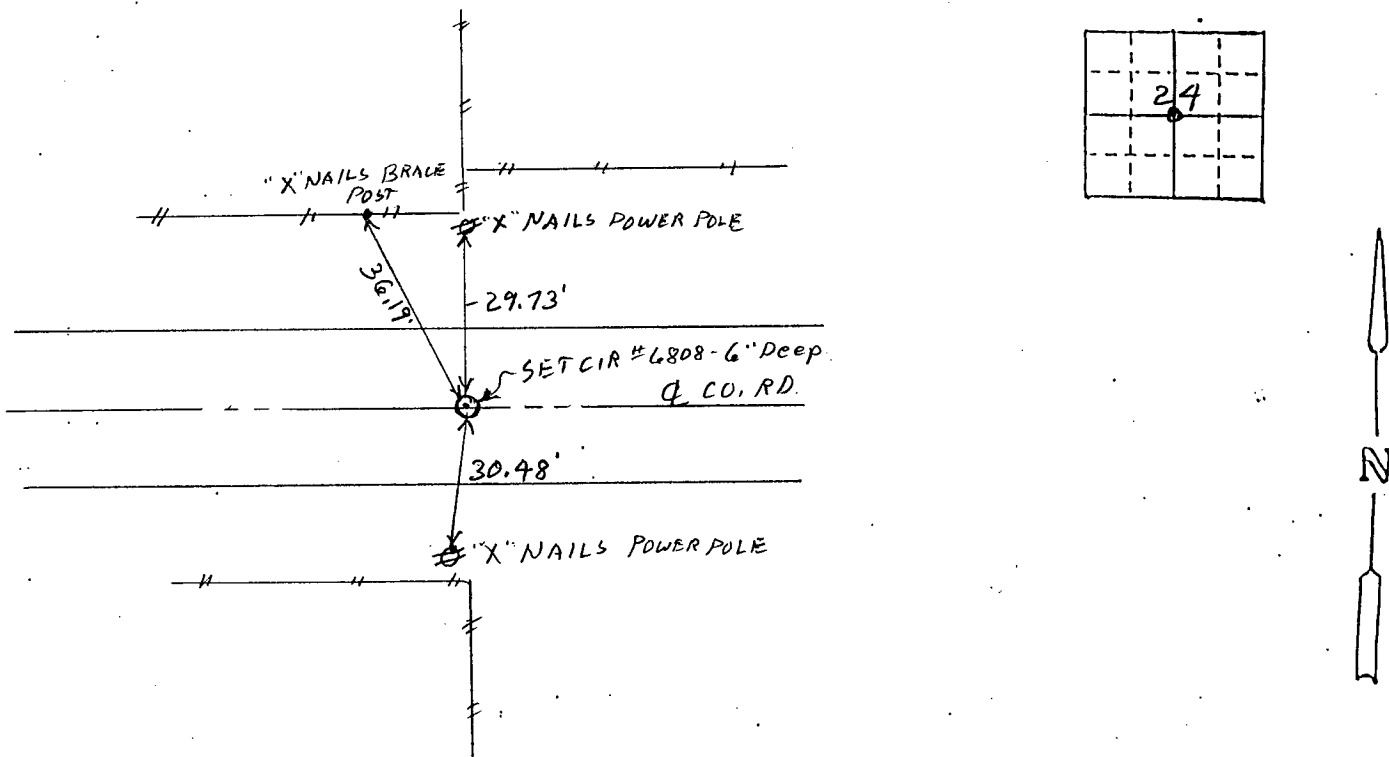
Previously recorded in _____ in County Recorder's Office.
(book, page, document number, etc.)

(Show reason for preparing this certificate, the evidence and detailed procedures used in establishing the the corner positions and monumentation found or placed.)

Monument Description and Remarks: CENTER OF SECTION 24-77-29 - Split
County Road Right-of-Way in line with Property Line
fence North and South and set CIR #4808. County road
records indicate road centered on line. No record of
anything ever being set at center.

PLAN - VIEW

(Show a minimum of three reference ties to durable physical objects, relevant monuments and physical conditions that will enable recovery of the corner.)



List Corners to be Indexed

Corners	Section	Twp	Range
CENTER	24	77 N	29 W

I hereby certify that this land surveying document was prepared and the related survey work was performed by me or under my direct personal supervision and that I am a duly licensed Land Surveyor under the laws of the State of Iowa.

J. M. Hochstetler
J. M. HOCHSTETLER

License number 6808 Date 9/24/99

My license renewal date is December 31, 1999.

Pages or sheets covered by this seal: 1

