

COMPUTER   
 RECORDED   
 COMPARED

REC \$ 500  
 AUD \$ \_\_\_\_\_  
 R.M.F. \$ 100

FILED NO. **001451**  
 BOOK 2 PAGE 95  
 99 OCT -8 PH 1:56

MICHELLE UTSLER  
 RECORDER  
 MADISON COUNTY, IOWA

VANCE & HOCHSTETLER, P.C., CONSULTING ENGINEERS, WINTERSSET, IOWA (515) 462-3995  
 CHARLES T. VANCE, 110 West Green St., Winterset, Iowa, 50273  
 JAMES M HOCHSTETLER, 110 West Green St., Winterset, Iowa 50273

UNITED STATES PUBLIC LAND SURVEY CORNER CERTIFICATE

Land Survey Monuments situated in Section 23 of Township 75 N, Range 26 W of the Fifth Principal Meridian, MADISON County, Iowa.  
 Previously recorded in Section Corner Book 1, Page 479 in County Recorder's Office.  
 (book, page, document number, etc.)

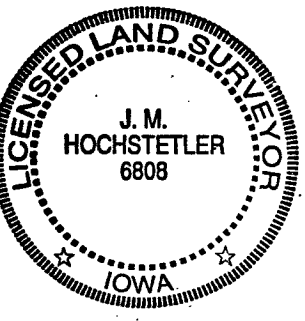
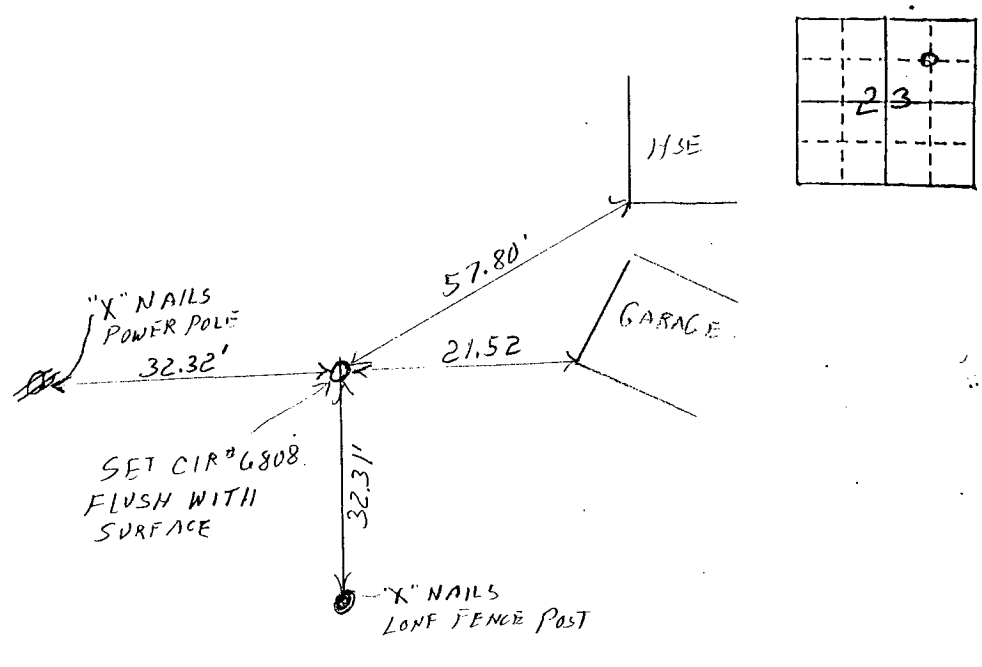
(Show reason for preparing this certificate, the evidence and detailed procedures used in establishing the the corner positions and monumentation found or placed.)

Monument Description and Remarks: Monument referenced previously had been destroyed. Reset CIA# 6808 based on previous surveys completed in the immediate vicinity by Vance & Hochstetler and Madison County Engineer

PLAN - VIEW

(Show a minimum of three reference ties to durable physical objects, relevant monuments and physical conditions that will enable recovery of the corner.)

NW COR  
 SE 1/4 NE 1/4  
 SEC. 23-75-26



I hereby certify that this land surveying document was prepared and the related survey work was performed by me or under my direct personal supervision and that I am a duly licensed Land Surveyor under the laws of the State of Iowa.  
J. M. Hochstetler  
 J. M. HOCHSTETLER  
 License number 6808 Date 9/20/99  
 My license renewal date is December 31, 1999.  
 Pages or sheets covered by this seal: 1

List Corners to be Indexed

Corners	Section	Twp	Range
NW COR SE 1/4 NE 1/4	23	75 N	26 W