

REC \$ 5.00

AUD \$

R.M.F. \$ 1.00

FILED NO. 001154

BOOK 2 PAGE 93

99 SEP 15 PM 3: 50

COMPUTER
RECORDED
COMPARED

MICHELLE UTSLER
RECORDER
MADISON COUNTY, IOWA

VANCE & HOCHSTETLER, P.C., CONSULTING ENGINEERS, WINTERSSET, IOWA (515) 462-3995

CHARLES T. VANCE, 110 West Green St., Winterset, Iowa, 50273

JAMES M HOCHSTETLER, 110 West Green St., Winterset, Iowa 50273

UNITED STATES PUBLIC LAND SURVEY CORNER CERTIFICATE

OF
Land Survey Monuments situated in Section 15, Township 76 N, Range 29 W, of the Fifth Principal Meridian, MADISON County, Iowa.
Previously recorded in _____ in County Recorder's Office.
(book, page, document number, etc.)

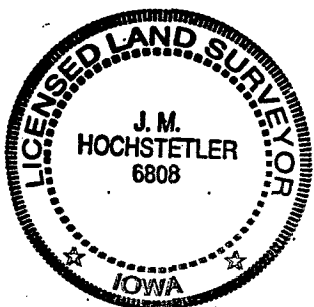
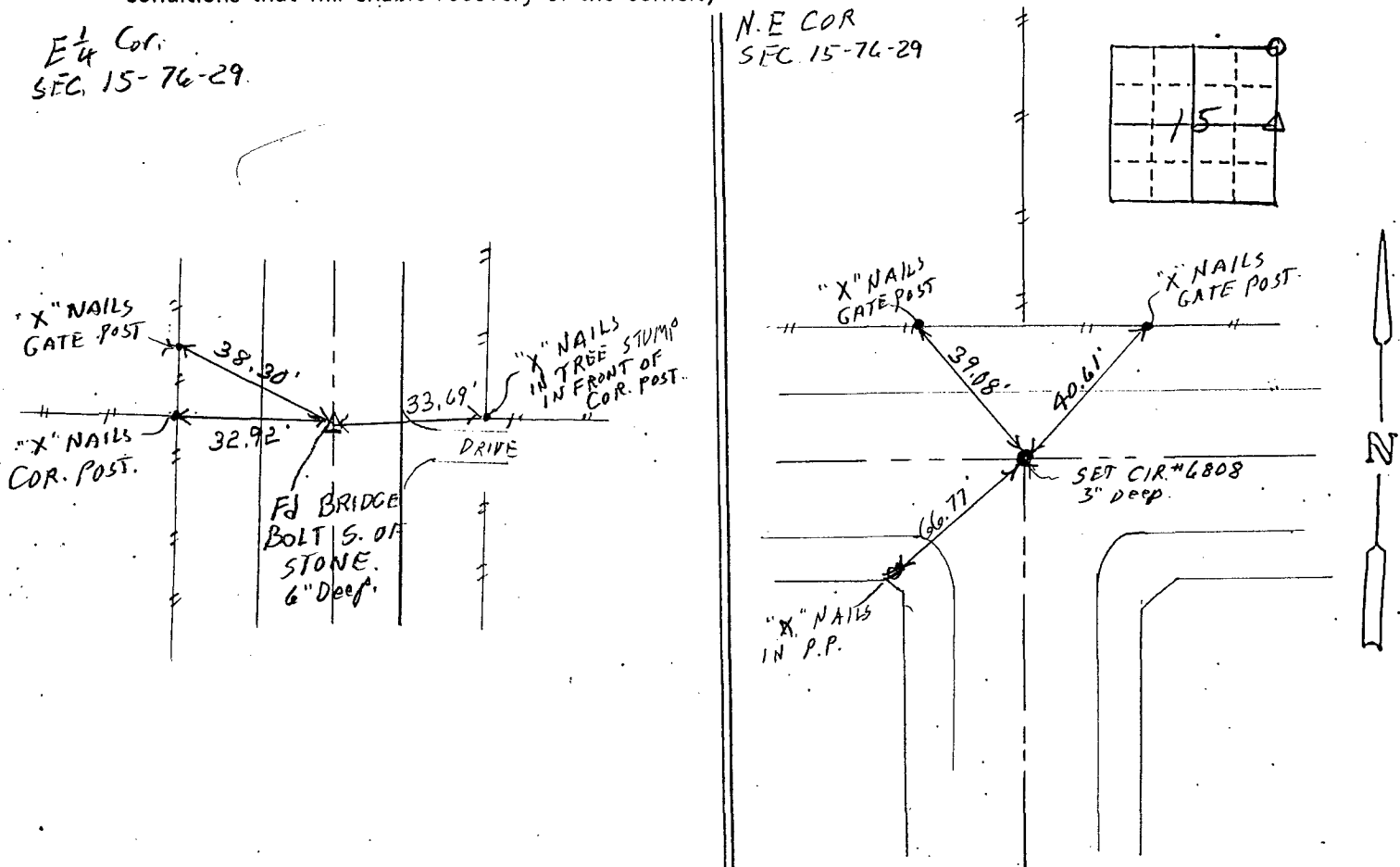
(Show reason for preparing this certificate, the evidence and detailed procedures used in establishing the the corner positions and monumentation found or placed.)

Monument Description and Remarks: E 1/4 Corner - Found Bridge Bolt on South edge of stone. Previously found and tied by Co. Engr. Surveyors in 1953.
N.E. Corner - Could not find anything and records at the Co. Engr. Office did not indicate anything ever being set. Set CIR #6808 at Co. Road East & West and in line with a property line fence to the North which matched the centerline of the Co. Road South.

PLAN - VIEW

(Show a minimum of three reference ties to durable physical objects, relevant monuments and physical conditions that will enable recovery of the corner.)

E 1/4 Cor.
SEC. 15-76-29.



I hereby certify that this land surveying document was prepared and the related survey work was performed by me or under my direct personal supervision and that I am a duly licensed Land Surveyor under the laws of the State of Iowa.

J.M. Hochstetler
J. M. HOCHSTETLER

License number 6808 Date 9/8/99

My license renewal date is December 31, 1999.

Pages or sheets covered by this seal: 1

List Corners to be Indexed

Corners	Section	Twp	Range
<u>E 1/4 COR.</u>	<u>15</u>	<u>76</u>	<u>29</u>
<u>NE COR.</u>	<u>15</u>	<u>76</u>	<u>29</u>