

REC \$ 5.00
AUD \$ _____
R.M.F. \$ 1.00

FILED NO. 000920
BOOK 2 PAGE 92

99 SEP - 1 PM 3: 23

COMPUTER _____
RECORDED _____
COMPARED _____

MICHELLE UTSLER
RECORDER
MADISON COUNTY, IOWA

VANCE & HOCHSTETLER, P.C., CONSULTING ENGINEERS, WINTerset, IOWA (515) 462-3995
CHARLES T. VANCE, 110 West Green St., Winterset, Iowa, 50273
JAMES M HOCHSTETLER, 110 West Green St., Winterset, Iowa 50273

UNITED STATES PUBLIC LAND SURVEY CORNER CERTIFICATE

OF
Land Survey Monuments situated in Section 4, Township 74 NORTH, Range
26 WEST, of the Fifth Principal Meridian, MADISON County, Iowa.
Previously recorded in _____ in County Recorder's Office.
(book, page, document number, etc.)

(Show reason for preparing this certificate, the evidence and detailed procedures used in establishing the the corner positions and monumentation found or placed.)

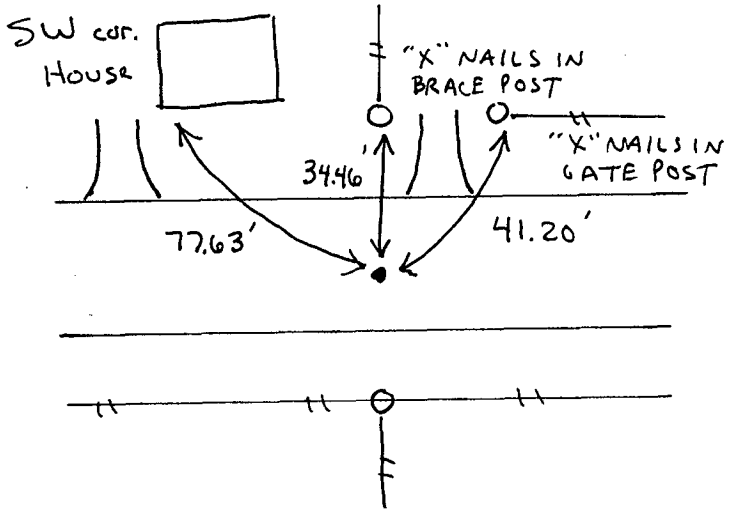
Monument Description and Remarks:

Center - Set Capped Iron Rod #6808 (2" deep) at road R.O.W.
split in line with property line fence to North (fence going South
is approx. 2' W. of this point).
NE cor. NW. 1/4 SE. 1/4 - Set C.I.R. #6808 (2" deep) at intersection of
property line fence to South & line between E. 1/4 cor. & Center.

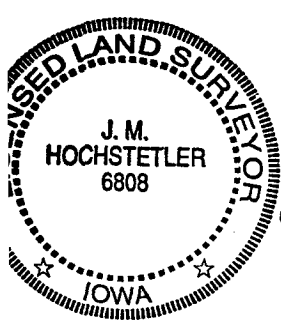
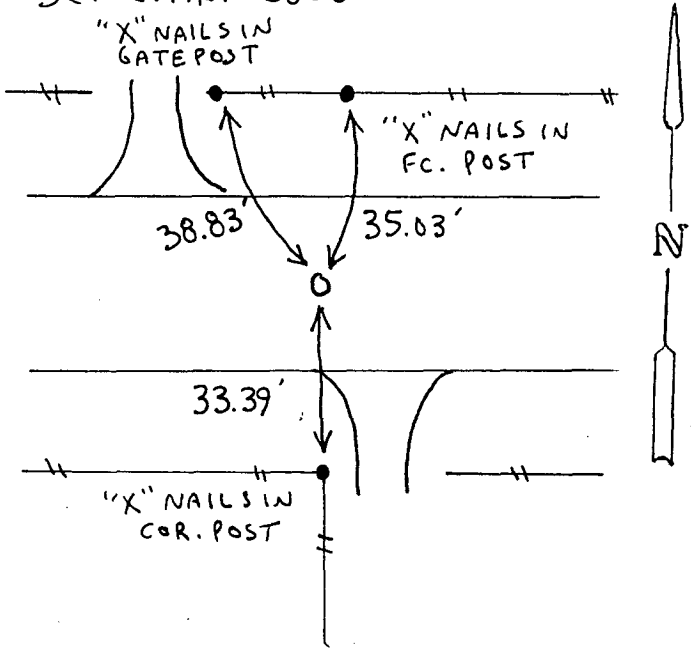
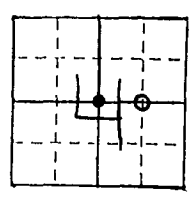
PLAN - VIEW

(Show a minimum of three reference ties to durable physical objects, relevant monuments and physical conditions that will enable recovery of the corner.)

CENTER
SEC. 4-74-26
Set C.I.R. #6808



NE CORNER
NW. 1/4 SE. 1/4
SEC. 4-74-26
Set C.I.R. #6808



I hereby certify that this land surveying document was prepared and the related survey work was performed by me or under my direct personal supervision and that I am a duly licensed Land Surveyor under the laws of the State of Iowa.
J.M. Hochstetler
J. M. HOCHSTETLER
License number 6808 Date 9/1/99
My license renewal date is December 31, 1999.
Pages or sheets covered by this seal: 1

List Corners to be Indexed

Corners	Section	Twp	Range
Center	4	74N	26W
NE cor. NW. 1/4 SE. 1/4	4	74N	26W