

UNITED STATES PUBLIC LAND SURVEY CORNER CERTIFICATE

OF

Land Survey Monuments situated in Section 9, Township 77 N, Range 29 W, of the Fifth Principal Meridian, MADISON County, Iowa. Previously recorded in _____ in County Recorder's Office.

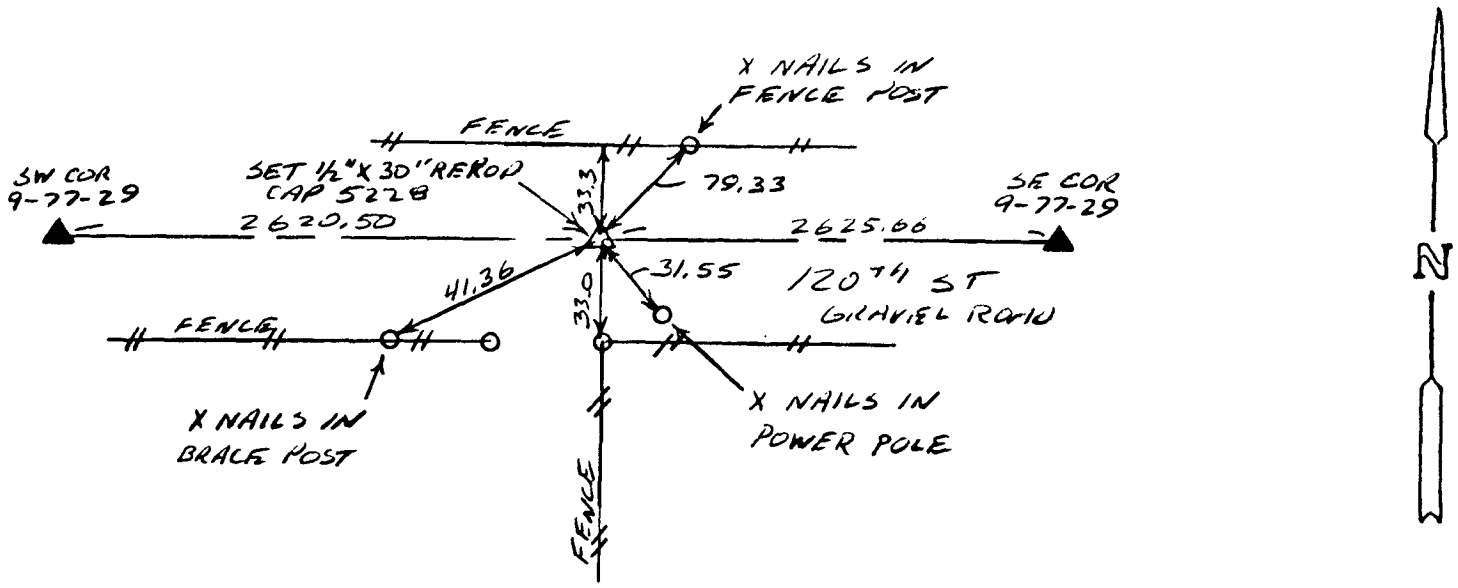
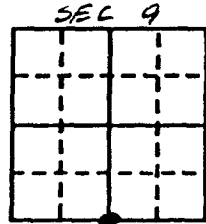
(book, page, document number, etc.)

(Show reason for preparing this certificate, the evidence and detailed procedures used in establishing the corner positions and monumentation found or placed.)

Monument Description and Remarks: SET 1/2" X 30" RECOR W/CAP 5228.
ON LINE BTN SW CORNER AND SE CORNER OF SECTION, LINES WITH
FENCE RUNNING TO SOUTH

PLAN - VIEW

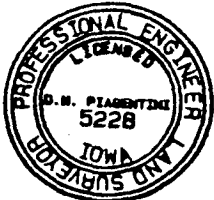
(Show a minimum of three reference ties to durable physical objects, relevant monuments and physical conditions that will enable recovery of the corner.)



I hereby certify that the survey work was completed and this certificate was prepared by me or under my direct personal supervision and that I am a duly registered land surveyor under the laws of the state of Iowa.

Signature: [Signature]
Name typed or printed: DEL PIAGENTINI

Date: 11-30-99 Reg. No. 5228



SEAL

Corners	List Corners to be Indexed Section	Twp	Range
S/4 COR	9	77	29
N/4 COR	16	77	29

REC \$ 5.00
AUD \$ _____
R.M.F. \$ 1.30

FILED NO. 002085
BOOK 2 PAGE 108

COMPUTER
RECORDED
COMPARED

1999 NOV 30 PM 12: 53
SHELLE UTSLER
RECORDER
MADISON COUNTY, IOWA