

REC \$ 5.00
AUD \$ _____
R.M.F. \$ 1.00

FILED NO. 001917
BOOK 2 PAGE 104

1999 NOV 12 PM 12:41

COMPUTER
RECORDED
COMPARED

MICHELLE UTSLER
RECORDER
MADISON COUNTY, IOWA

VANCE & HOCHSTETLER, P.C., CONSULTING ENGINEERS, WINTERSSET, IOWA (515) 462-3995
CHARLES T. VANCE, 110 West Green St., Winterset, Iowa, 50273
JAMES M HOCHSTETLER, 110 West Green St., Winterset, Iowa 50273

UNITED STATES PUBLIC LAND SURVEY CORNER CERTIFICATE

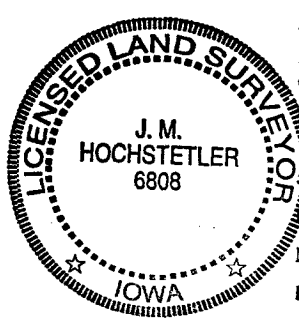
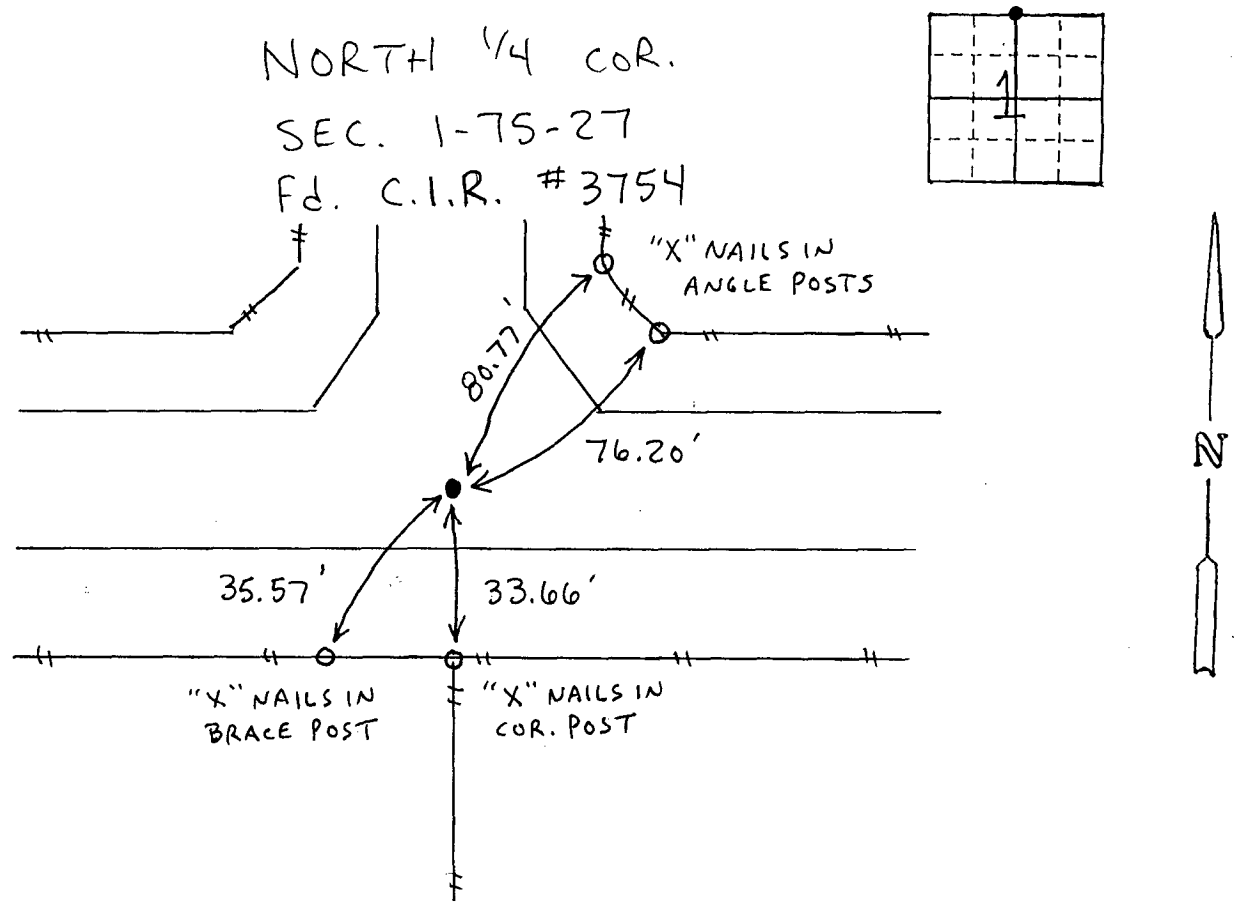
OF 1
Land Survey Monuments situated in Section 1, Township 75 NORTH, Range 27 WEST, of the Fifth Principal Meridian, MADISON County, Iowa.
Previously recorded in _____ in County Recorder's Office.
(book, page, document number, etc.)

(Show reason for preparing this certificate, the evidence and detailed procedures used in establishing the the corner positions and monumentation found or placed.)

Monument Description and Remarks: N. 1/4 cor. - Fd. Capped Iron Rod (C.I.R.) #3754, 4" deep at "T" intersection

PLAN - VIEW

(Show a minimum of three reference ties to durable physical objects, relevant monuments and physical conditions that will enable recovery of the corner.)



I hereby certify that this land surveying document was prepared and the related survey work was performed by me or under my direct personal supervision and that I am a duly licensed Land Surveyor under the laws of the State of Iowa.
J.M. Hochstetler
J.M. HOCHSTETLER
License number 6808 Date 11/2/99
My license renewal date is December 31, 1999.
Pages or sheets covered by this seal: 1

List Corners to be Indexed			
Corners	Section	Twp	Range
N. 1/4 cor.	1	75N	27W