

REC \$ 5.00

FILED NO. 000753

AUD \$ \_\_\_\_\_

BOOK 2 PAGE 89

R.M.F. \$ 1.00

99 AUG 20 PM 1:29

COMPUTER

RECORDED

COMPARED

MICHELLE UTSLER  
RECORDER  
MADISON COUNTY, IOWA

SL 819-80

# UNITED STATES PUBLIC LAND SURVEY CORNER CERTIFICATE OF

Land Survey Monuments situated in Section 15, Township 74 North, Range 26 West, of the Fifth Principal Meridian, Madison County, Iowa.

Previously recorded in \_\_\_\_\_ in County Recorder's Office.  
(book, page, document number, ect.)

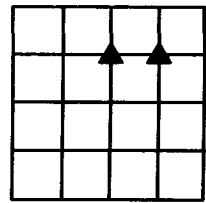
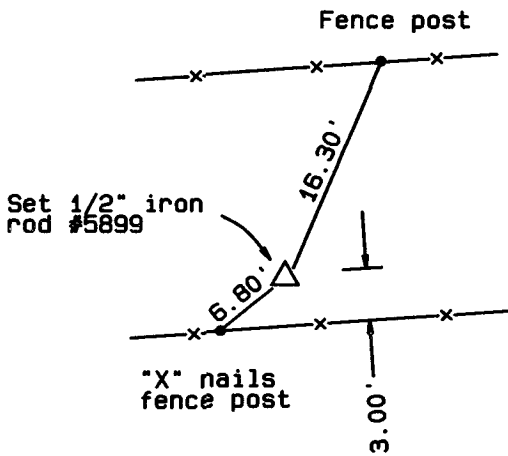
(Show reason for preparing this certificate, the evidence and detailed procedures used in establishing the corner positions and found or placed.)

Monument Description and Remarks: SW Cor. NW 1/4 NE 1/4 - Set at the split between the N 1/4 Cor. and Center of section. SE Cor. NW 1/4 NE 1/4 - Set at the split between the SW Cor. NW 1/4 NE 1/4 and the SE Cor. NE 1/4 NE 1/4.

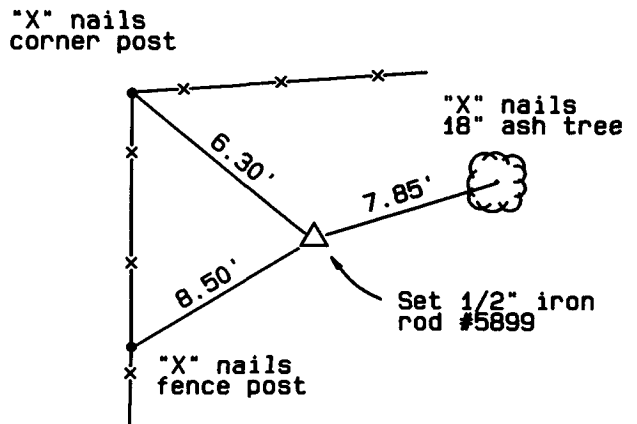
## PLAN - VIEW

(Show a minimum of three reference ties to durable physical objects, relevant monuments and physical conditions that will enable recovery of the corner)

SW COR. NW 1/4 NE 1/4 SEC. 15-74-26



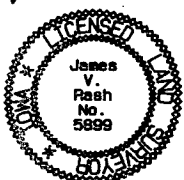
SE COR. NW 1/4 NE 1/4 SEC. 15-74-26



I hereby certify that this land surveying document was prepared and the related survey work was performed by me or under my direct personal supervision and that I am a duly licensed Land Surveyor under the laws of the State of Iowa.

Signed James V. Rash Date 7-27-99

James V. Rash, L.S.  
Iowa license No. 5899  
My license renewal date is December 31, 1999



### List Corners to be Indexed

Corners	Section	Twp.	Range
SW COR. NW 1/4 NE 1/4	15	74	26
SE COR. NW 1/4 NE 1/4	15	74	26