

REC \$ 5.00

FILED NO. 000751

AUD \$

R.M.F. \$ 1.00

BOOK 2 PAGE 87

COMPUTER ✓

99 AUG 20 PM 1:27

RECORDED ✓

MICHELLE UETSLER
RECORDER
MADISON COUNTY, IOWA

COMPARED ✓

SL 119-20

UNITED STATES PUBLIC LAND SURVEY CORNER CERTIFICATE OF

Land Survey Monuments situated in Section 15, Township 74 North, Range 26 West, of the Fifth Principal Meridian, Madison County, Iowa.

Previously recorded in _____ in County Recorder's Office.
(book, page, document number, ect.)

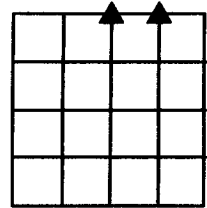
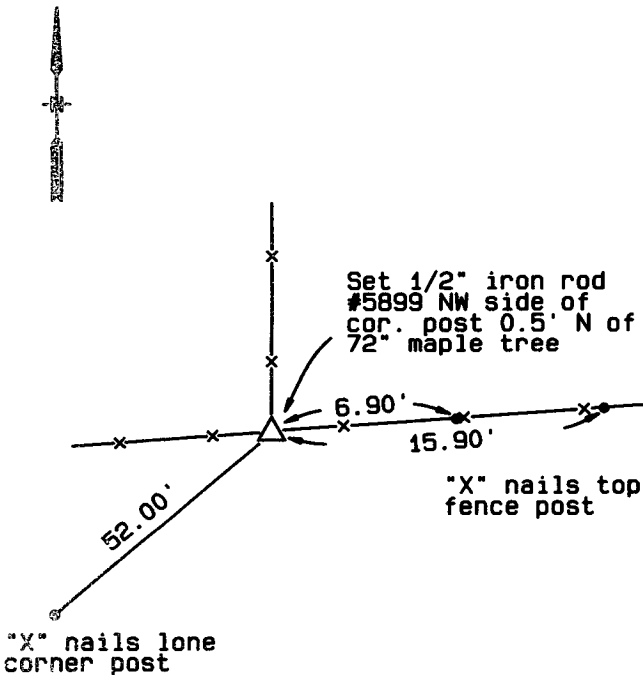
(Show reason for preparing this certificate, the evidence and detailed procedures used in establishing the corner positions and found or placed.)

Monument Description and Remarks: N 1/4 Cor. - Set in the East-West ancient fence line at the intersection with the ancient fence line North. NE Cor. NW 1/4 NE 1/4 - Set at the split between the N 1/4 Cor. and the NE Cor.

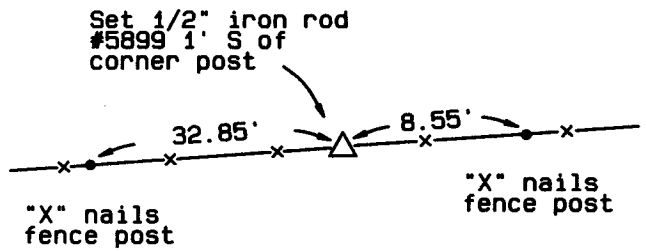
PLAN - VIEW

(Show a minimum of three reference ties to durable physical objects, relevant monuments and physical conditions that will enable recovery of the corner)

N 1/4 COR. SEC. 15-74-26



NE COR. NW 1/4 NE 1/4 SEC. 15-74-26

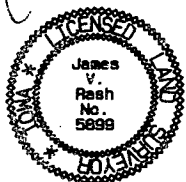


I hereby certify that this land surveying document was prepared and the related survey work was performed by me or under my direct personal supervision and that I am a duly licensed Land Surveyor under the laws of the State of Iowa.

Signed James V. Rash

Date 7-27-99

James V. Rash, L.S.
Iowa license No. 5899
My license renewal date is December 31, 1999



List Corners to be Indexed

Corners	Section	Twp.	Range
N 1/4 COR.	15	74	26
NE COR. NW 1/4 NE 1/4	15	74	26