

REC \$ 5⁰⁰
AUD \$ _____
R.M.F. \$ 1⁰⁰

1999 JUN 29 PM 3:37

COMPUTER
RECORDED
COMPARED _____

MICHELLE UTSLER
RECORDER
MADISON COUNTY, IOWA

PREPARED BY: BOLDMAN LAND SURVEYING, P.C. 521 WEST GREEN STREET, WINTERSSET, IA 50273 PHONE (515)462-3308

UNITED STATES PUBLIC LAND SURVEY CORNER CERTIFICATE

OF

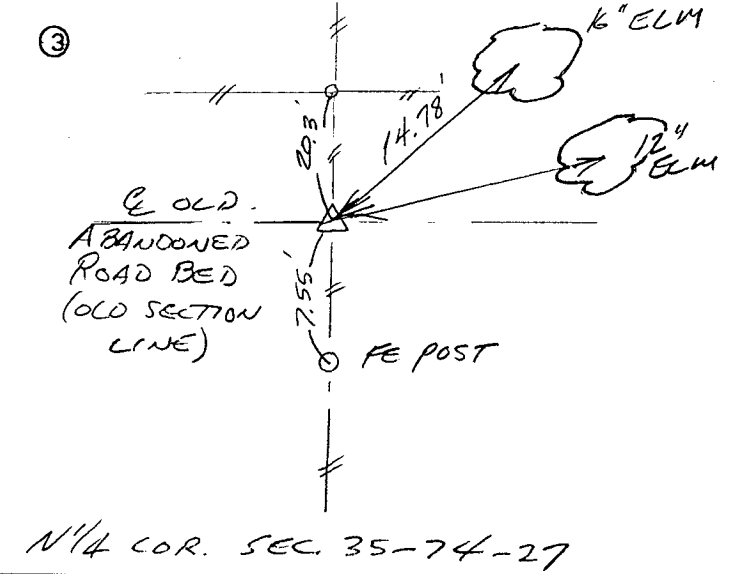
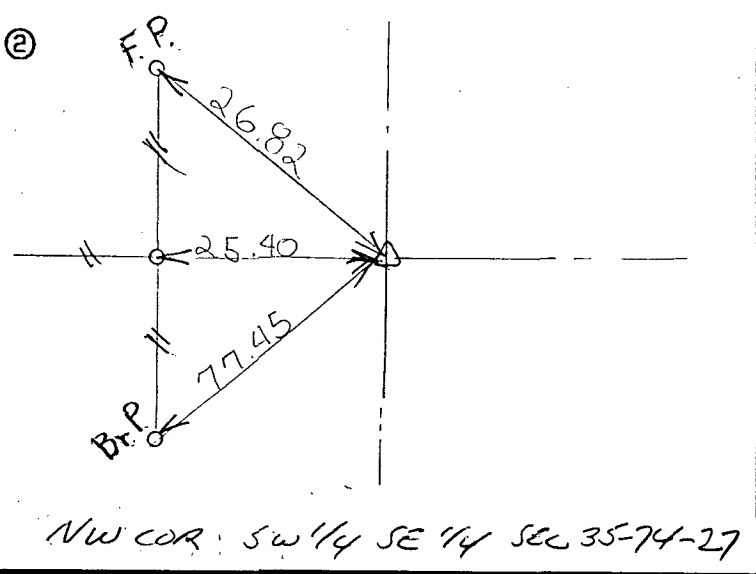
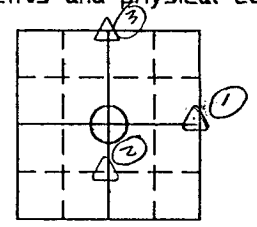
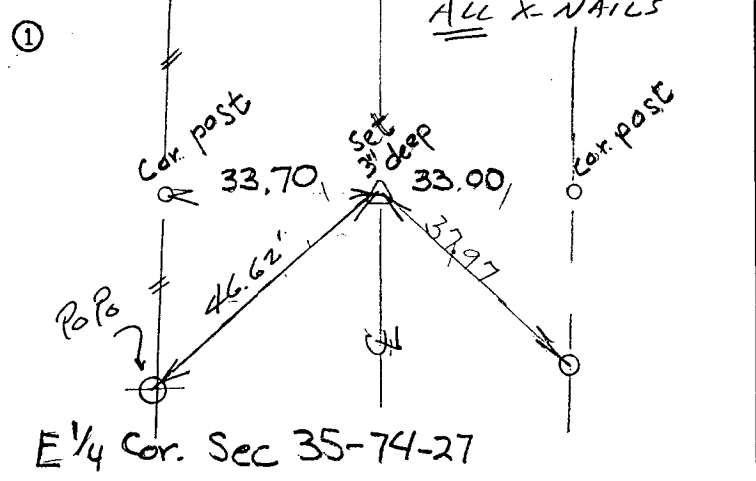
Land Survey Monuments situated in Section 35 Township 74 Range _____
27 of the Fifth Principal Meridian, MADISON County, Iowa
Previously recorded in NONE in County Recorder's Office.
(book, page, document number, etc.)

(show reason for preparing this certificate, the evidence and detailed procedures used in establishing the corner positions and monumentation found or placed.)

Monument Description and Remarks: ① Found Spike Nail 6" deep. Set 1/2" pin w/ cap #13427
② Set 1/2" pin w/ cap at midpoint of west line SE 1/4
③ Set 1/2" pin w/ cap 20' south of fence based on 1960 aerial photo of old abandoned road.

PLAN-VIEW

(Show a minimum of three reference ties to durable physical objects, relevant monuments and physical conditions that will enable recovery of the corner.)

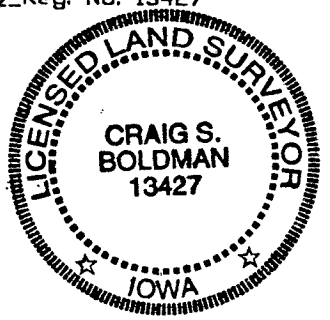


I hereby certify that the survey work was completed and this certificate was prepared by me or under my direct personal supervision and that I am a duly Licensed Land Surveyor under the laws of the State of Iowa

Signature: Craig S. Boldman
Craig S. Boldman

Date: 6/28/99 Reg. No. 13427

SEAL



List Corners to be Indexed

Corners	Section	Twp	Range
N 1/4	35	74	27
E 1/4	35	74	27
NW COR	35	74	27
Sw 1/4 SE 1/4			