

REC \$ 5⁰⁰
 AUD \$ _____
 R.M.F. \$ 1⁰⁰

FILED NO. 005375
 BOOK 2 PAGE 55

JUN 29 PM 3:36

COMPUTER
 RECORDED
 COMPARED _____

NICHILLE UTSLER
 RECORDER
 MADISON COUNTY, IOWA

PREPARED BY: BOLDMAN LAND SURVEYING, P.C. 521 WEST GREEN STREET, WINTERSSET, IA 50273 PHONE (515)462-3308

UNITED STATES PUBLIC LAND SURVEY CORNER CERTIFICATE

OF

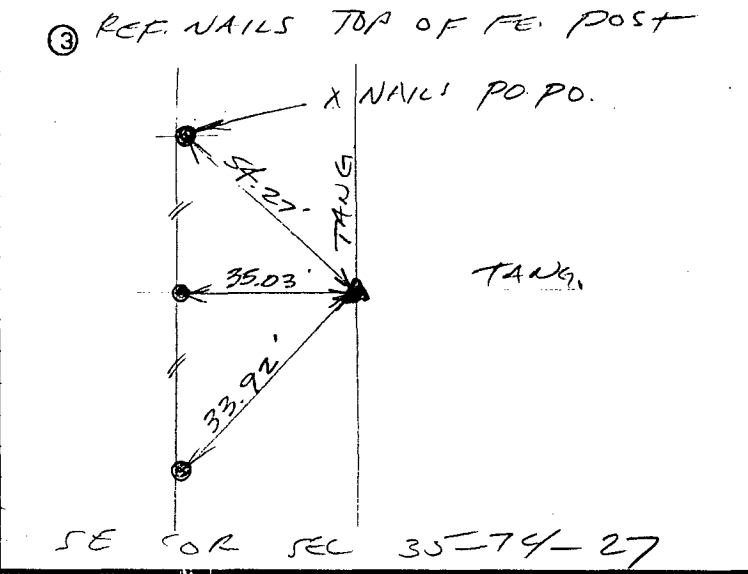
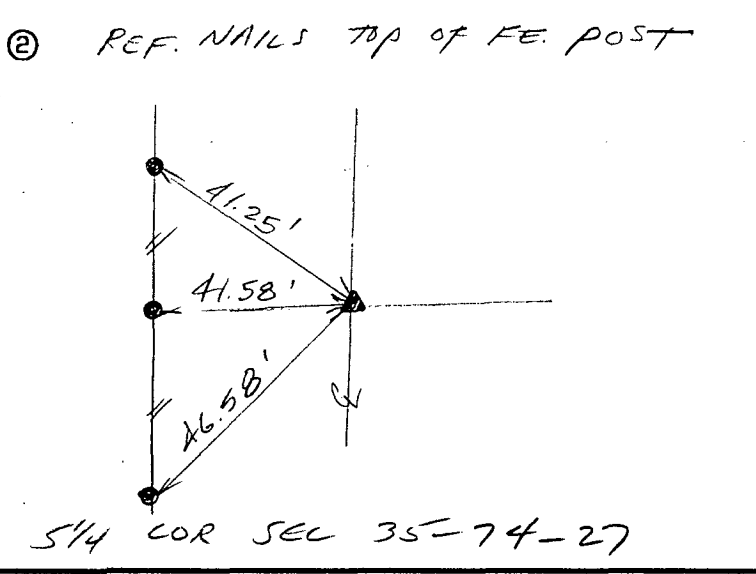
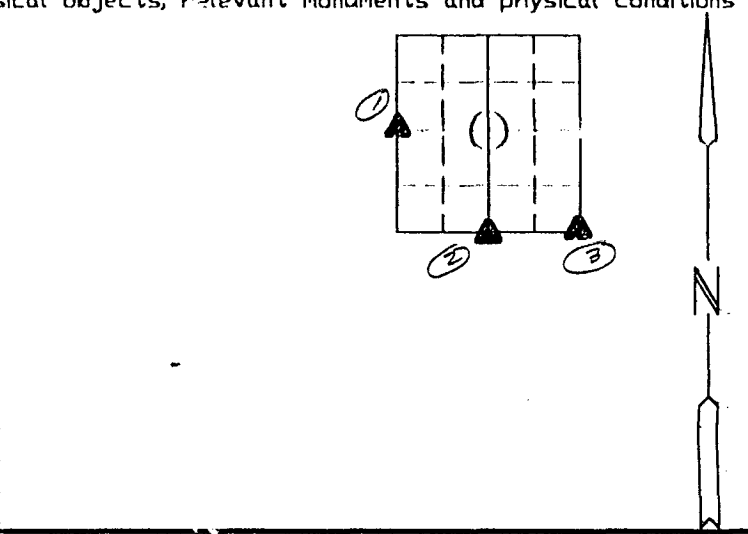
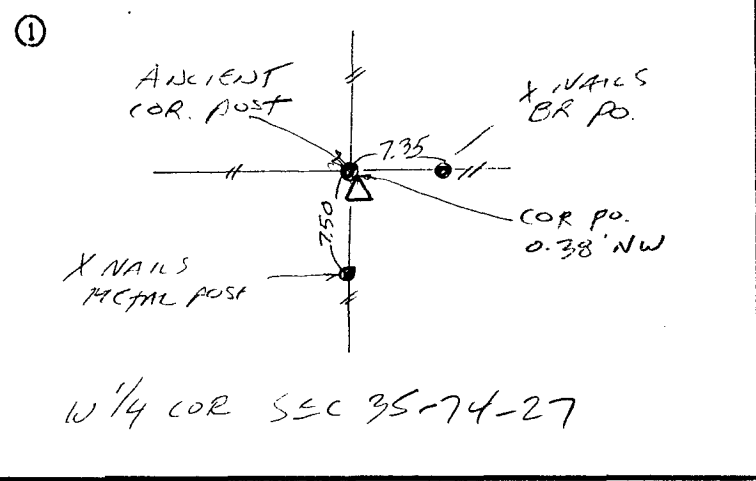
Land Survey Monuments situated in Section 35 Township 74 Range _____
 of the Fifth Principal Meridian, MADISON County, Iowa
 Previously recorded in NONE In County Recorder's Office.
 (book, page, document number, etc.)

(show reason for preparing this certificate, the evidence and detailed procedures used in establishing the corner positions and monumentation found or placed.)

Monument Description and Remarks: ① ACCEPTED ANCIENT FE. POST, SET 1/2" PIN SE EDGE OF POST
② FOUND PIN w/ OLD CAP ③ FOUND 3/4" I. BAR 15" DEEP AT INTERSECTION OF TANGENTS.

PLAN-VIEW

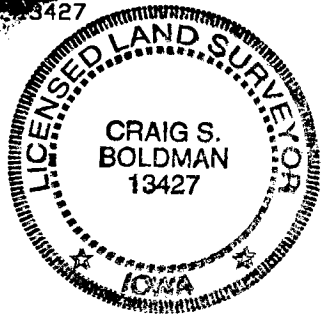
(Show a minimum of three reference ties to durable physical objects, relevant monuments and physical conditions that will enable recovery of the corner.)



I hereby certify that the survey work was completed and this certificate was prepared by me or under my direct personal supervision and that I am a duly Licensed Land Surveyor under the laws of the State of Iowa

Signature: Craig S. Boldman
 Craig S. Boldman

Date: 6/28/99 Reg. No. 13427



SEAL

List Corners to be Indexed

Corners	Section	Twp	Range
W 1/4	35	74	27
S 1/4	35	74	27
SE	35	74	27