

COMPUTER ✓  
RECORDED ✓  
COMPARED ✓

FILED NO. **5281**

BOOK 2 PAGE 53

99 JUN 24 PM 2:17

REC \$ 5.00  
AUD \$ \_\_\_\_\_  
R.M.F. \$ \_\_\_\_\_

MICHELLE UTSLER  
RECORDER  
MADISON COUNTY, IOWA

VANCE & HOCHSTETLER, P.C., CONSULTING ENGINEERS, WINTERSSET, IOWA (515) 462-3995

CHARLES T. VANCE, 110 West Green St., Winterset, Iowa, 50273  
JAMES M HOCHSTETLER, 110 West Green St., Winterset, Iowa 50273

UNITED STATES PUBLIC LAND SURVEY CORNER CERTIFICATE

OF  
Land Survey Monuments situated in Section 22, Township 75 NORTH, Range 29 WEST, of the Fifth Principal Meridian, MADISON County, Iowa.  
Previously recorded in \_\_\_\_\_ in County Recorder's Office.  
(book, page, document number, etc.)

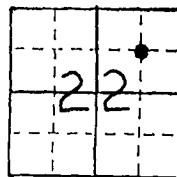
(Show reason for preparing this certificate, the evidence and detailed procedures used in establishing the the corner positions and monumentation found or placed.)

Monument Description and Remarks:

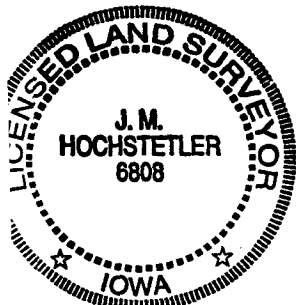
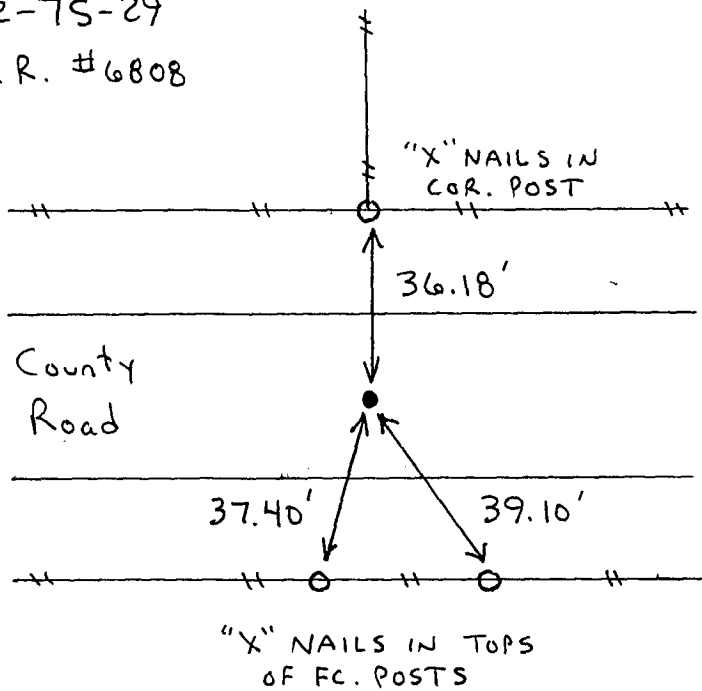
SW cor. NE. 1/4 NE. 1/4 - Set C.I.R. #6808 at road right-of-way split in line with existing fence line to North. Set pin 2" deep in roadway.

PLAN - VIEW

(Show a minimum of three reference ties to durable physical objects, relevant monuments and physical conditions that will enable recovery of the corner.)



SW CORNER  
NE. 1/4 NE. 1/4  
SEC. 22-75-29  
Set C.I.R. #6808



I hereby certify that this land surveying document was prepared and the related survey work was performed by me or under my direct personal supervision and that I am a duly licensed Land Surveyor under the laws of the State of Iowa.

J.M. Hochstetler  
J.M. HOCHSTETLER

License number 6808 Date 6/24/99  
My license renewal date is December 31, 1999.  
Pages or sheets covered by this seal: 1

List Corners to be Indexed

Corners	Section	Twp	Range
SW cor. NE. 1/4 NE. 1/4	22	75N	29W