

COMPUTER   
RECORDED   
COMPARED

FILED NO. 5280

BOOK 2 PAGE 52

99 JUN 24 PH 2:16

REC \$ 5.00  
AUD \$ \_\_\_\_\_  
R.M.F. \$ 1.00

MICHELLE UTSLER  
RECORDER  
MADISON COUNTY, IOWA

VANCE & HOCHSTETLER, P.C., CONSULTING ENGINEERS, WINTERSSET, IOWA (515) 462-3995

CHARLES T. VANCE, 110 West Green St., Winterset, Iowa, 50273  
JAMES M HOCHSTETLER, 110 West Green St., Winterset, Iowa 50273

### UNITED STATES PUBLIC LAND SURVEY CORNER CERTIFICATE OF

Land Survey Monuments situated in Section 15, Township 75 NORTH, Range 29 WEST, of the Fifth Principal Meridian, MADISON County, Iowa.  
Previously recorded in \_\_\_\_\_ in County Recorder's Office.  
(book, page, document number, etc.)

(Show reason for preparing this certificate, the evidence and detailed procedures used in establishing the the corner positions and monumentation found or placed.)

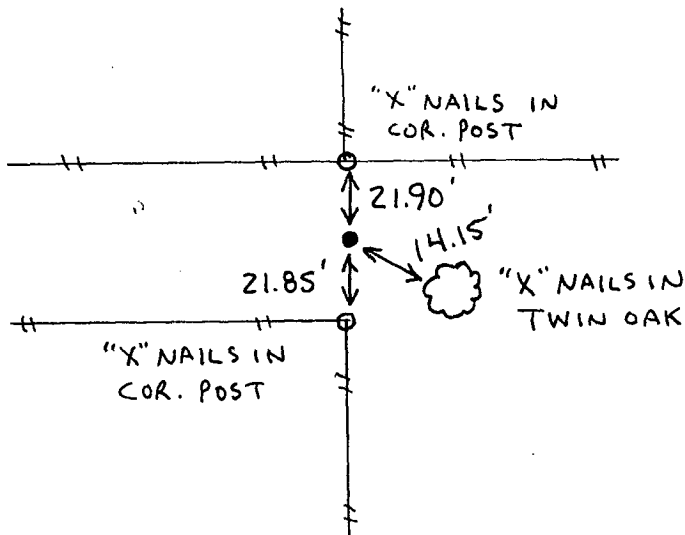
Monument Description and Remarks:

SW cor. SE. 1/4 SE. 1/4 - Set C.I.R. #6808 at split of old East-West roadway in line with North-South fence lines.  
S. 1/4 cor. - Set C.I.R. #6808 at intersection of county roads to South and West.

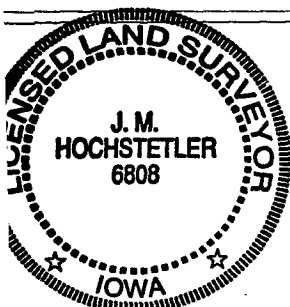
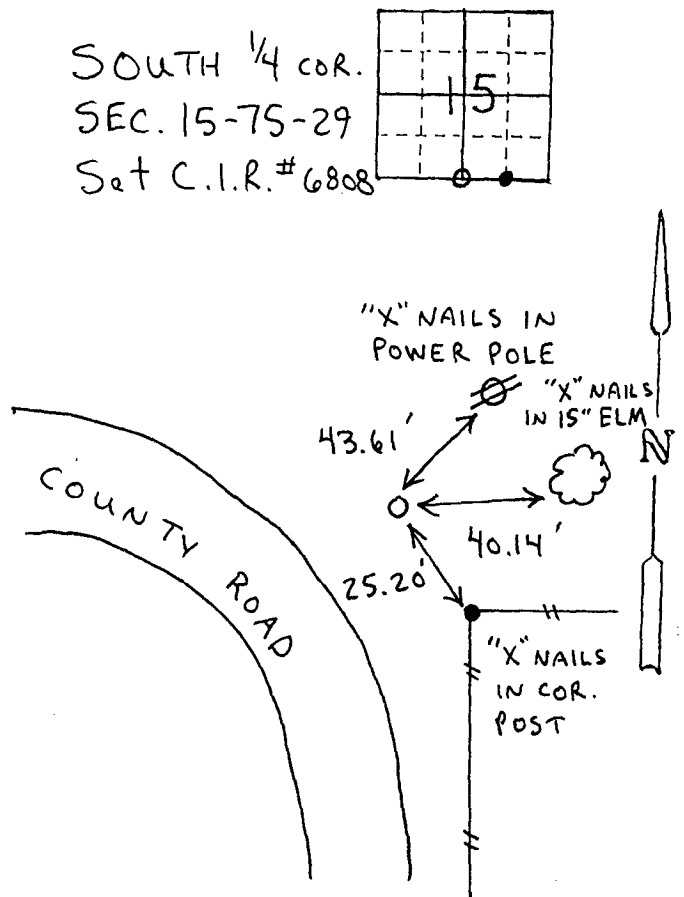
### PLAN - VIEW

(Show a minimum of three reference ties to durable physical objects, relevant monuments and physical conditions that will enable recovery of the corner.)

SW CORNER  
SE. 1/4 SE. 1/4  
SEC. 15-75-29  
Set C.I.R. #6808



SOUTH 1/4 COR.  
SEC. 15-75-29  
Set C.I.R. #6808



I hereby certify that this land surveying document was prepared and the related survey work was performed by me or under my direct personal supervision and that I am a duly licensed Land Surveyor under the laws of the State of Iowa.

*J.M. Hochstetler*  
J.M. HOCHSTETLER

License number 6808 Date 6/29/99  
My license renewal date is December 31, 1999.  
Pages or sheets covered by this seal: 1

### List Corners to be Indexed

Corners	Section	Twp	Range
SW cor.	15	75N	29W
SE. 1/4 SE. 1/4			
S. 1/4 cor.	15	75N	29W