

COMPUTER
 RECORDED
 COMPARED

FILED NO. 5214
 BOOK 2 PAGE 47
 99 JUN 22 AM 8:07
 MICHELLE UTSLER
 RECORDER
 MADISON COUNTY, IOWA

REC \$ 5.00
 AUD \$
 R.M.F. \$ 1.00

PREPARED BY: BOLDMAN LAND SURVEYING, P.C. 521 WEST GREEN STREET, WINNERSSET, IA 50273 PHONE (515)462-3300

UNITED STATES PUBLIC LAND SURVEY CORNER CERTIFICATE

OF

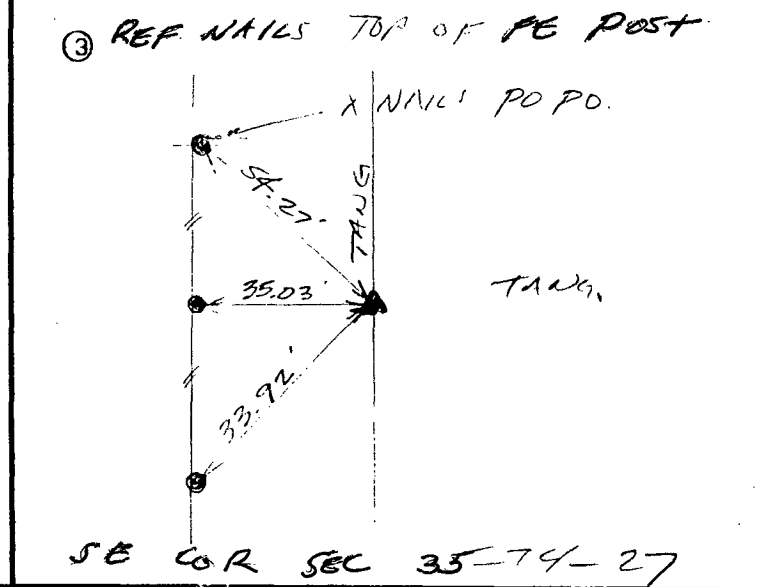
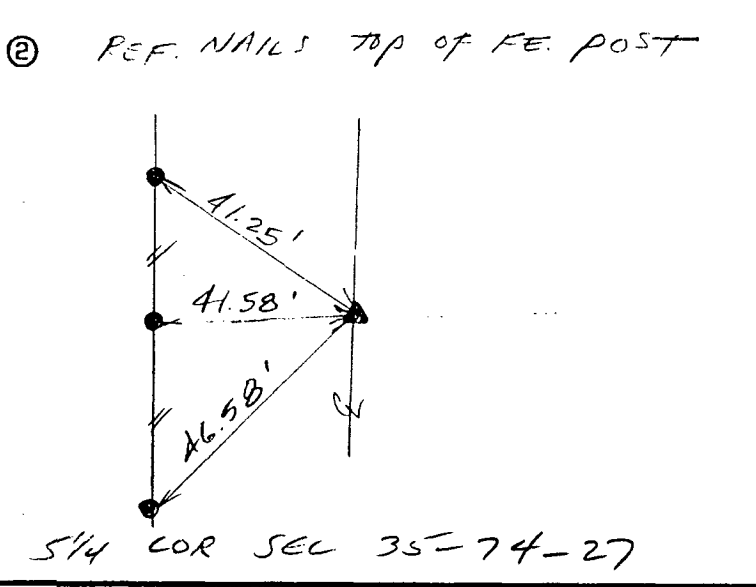
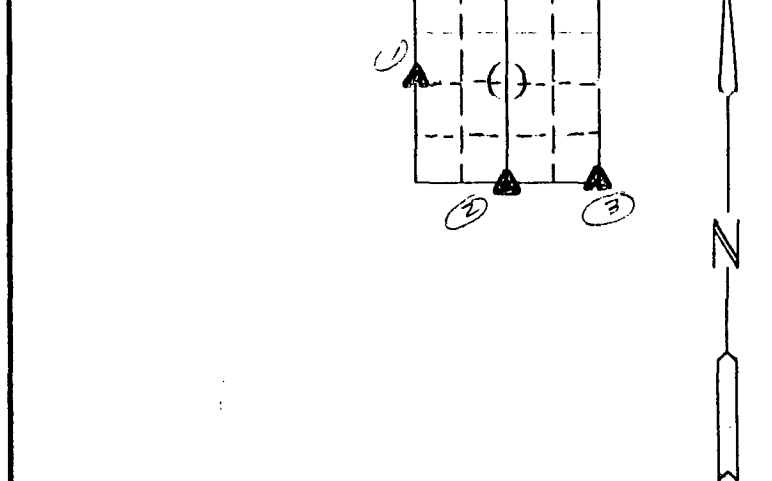
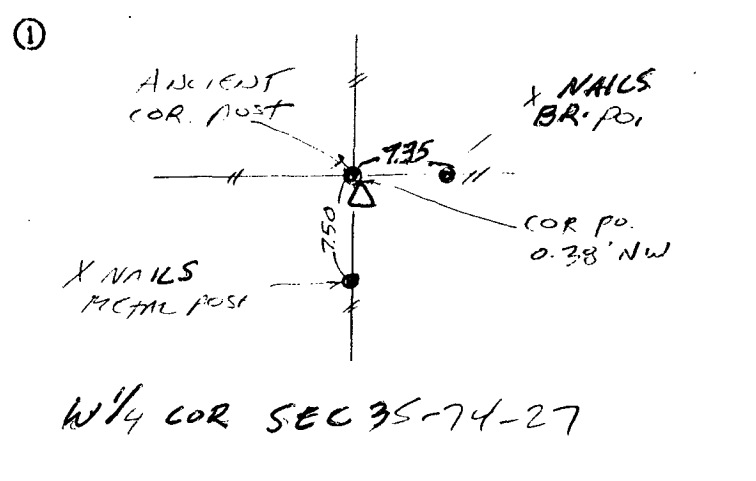
Land Survey Monuments situated in Section 35 Township 74 Range
27 of the Fifth Principal Meridian, MADISON County, Iowa
 Previously recorded in NONE in County Recorder's Office.
 (book, page, document number, etc.)

(show reason for preparing this certificate, the evidence and detailed procedures used in establishing the corner positions and monumentation found or placed.)

Monument Description and Remarks: ① ACCEPTED ANCIENT FE POST, SET 1/2" PIN SE EDGE OF POST
② FOUND PIN W OLD CAP ③ FOUND 3/4" I BAR 15" DEEP AT INTERSECTION OF TANGENTS

PLAN-VIEW

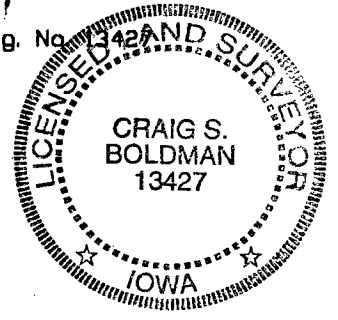
(Show a minimum of three reference ties to durable physical objects, relevant monuments and physical conditions that will enable recovery of the corner.)



I hereby certify that the survey work was completed and this certificate was prepared by me or under my direct personal supervision and that I am a duly Licensed Land Surveyor under the laws of the State of Iowa

Signature: Craig S. Boldman

Date: 6/21/99 Reg. No. 3427



SEAL

List Corners to be Indexed

Corners	Section	Twp	Range
W 1/4	35	74	27
S 1/4	35	74	27
SE	35	74	27