

REC \$ 500
 AUD \$ _____
 R.M.F. \$ 100

COMPUTER
 RECORDED
 COMPARED

FILED NO. 4847
 BOOK 2 PAGE 46
 99 MAY 28 PM 3:53

MICHELLE UTSLER
 RECORDER
 MADISON COUNTY, IOWA

VANCE & HOCHSTETLER, P.C., CONSULTING ENGINEERS, WINTERSSET, IOWA (515) 462-3995
 CHARLES T. VANCE, 110 West Green St., Winterset, Iowa, 50273
 JAMES M HOCHSTETLER, 110 West Green St., Winterset, Iowa 50273

UNITED STATES PUBLIC LAND SURVEY CORNER CERTIFICATE

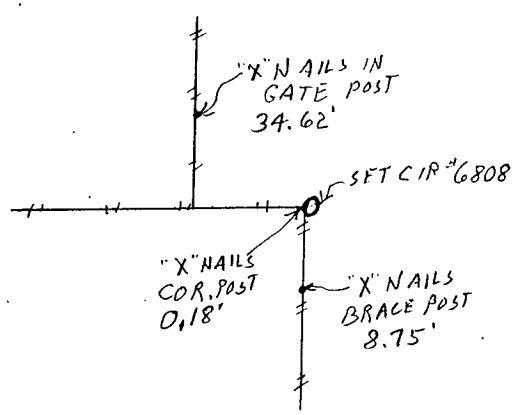
Land Survey Monuments situated in Section 1 OF 1 Township 76 N Range 28 W of the Fifth Principal Meridian, MADISON County, Iowa. Previously recorded in _____ in County Recorder's Office. (book, page, document number, etc.)

(Show reason for preparing this certificate, the evidence and detailed procedures used in establishing the the corner positions and monumentation found or placed.)

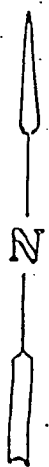
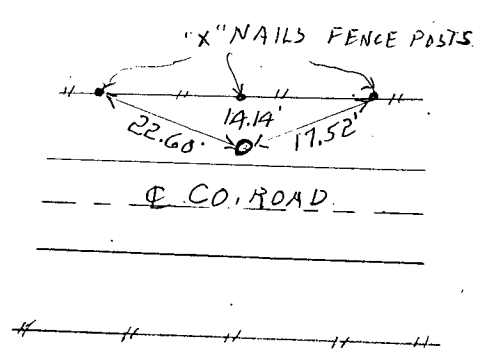
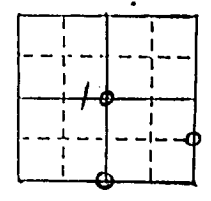
Monument Description and Remarks: CENTER - SEC. 1-76-28 SET AT EXISTING PROPERTY LINE FENCE CORNER
SE COR NE 1/4 SE 1/4 SEC. 1-76-28 - SET CIR #6808 ON LINE BETWEEN FOUND IA. DOT DISCS AT E 1/4 COR & SE COR; DISTANCE SET BASED ON ROW LEGAL DESCRIPTIONS
S 1/4 COR SEC 1-76-28 - SET CIR #6808 BASED ON PROJECTION OF ROAD FROM WEST AND OLD PROPERTY DESCRIPTIONS AND FENCE EVIDENCE
 PLAN - VIEW

(Show a minimum of three reference ties to durable physical objects, relevant monuments and physical conditions that will enable recovery of the corner.)

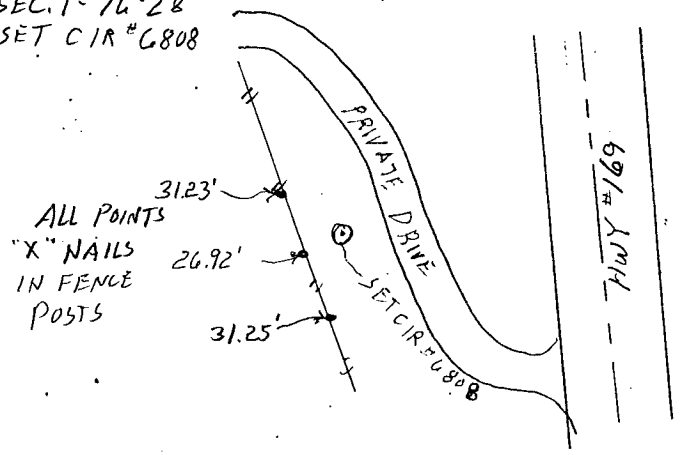
CENTER
 SEC. 1-76-28
 SET CIR #6808



S 1/4 COR
 SEC. 1-76-28
 SET CIR #6808



SE COR NE 1/4 SE 1/4
 SEC. 1-76-28
 SET CIR #6808



List Corners to be Indexed

Corners	Section	Twp	Range
CENTER	1	76N	28W
SE COR			
NE 1/4 SE 1/4	1	76N	28W
S 1/4 COR	1	76N	28W

I hereby certify that this land surveying document was prepared and the related survey work was performed by me or under my direct personal supervision and that I am a duly licensed Land Surveyor under the laws of the State of Iowa.

J. M. Hochstetler
 J. M. HOCHSTETLER
 License number 6808 Date 5/21/99
 My license renewal date is December 31, 1999
 Pages or sheets covered by this seal: 1

