

COMPUTER
RECORDED
COMPARED

FILED NO. 4642

BOOK 2 PAGE 42

99 MAY 14 PM 3:17

REC \$ 5.00
AUD \$ 1.00
R.M.F. \$ 1.00

MICHELLE UTSLER
RECORDER
MADISON COUNTY, IOWA

VANCE & HOCHSTETLER, P.C., CONSULTING ENGINEERS, WINTERSSET, IOWA (515) 462-3995
CHARLES T. VANCE, 110 West Green St., Winterset, Iowa, 50273
JAMES M HOCHSTETLER, 110 West Green St., Winterset, Iowa 50273

UNITED STATES PUBLIC LAND SURVEY CORNER CERTIFICATE

OF

Land Survey Monuments situated in Section 2, Township 74 NORTH, Range 28 WEST, of the Fifth Principal Meridian, MADISON County, Iowa.
Previously recorded in _____ in County Recorder's Office.

(book, page, document number, etc.)

(Show reason for preparing this certificate, the evidence and detailed procedures used in establishing the the corner positions and monumentation found or placed.)

Monument Description and Remarks:

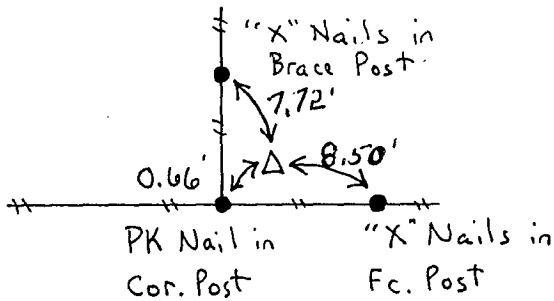
NE cor. NW. 1/4 SE. 1/4 - Fd. Conc. Monument with exposed Iron Pin on top
Center - Fd. 5/8" Iron Pin along US Hwy 169 (previously ref. by I.D.O.T.)
SW cor. NW. 1/4 SE. 1/4 - Set PK Nail in road surface using existing
ties.

All Corners previously tied by I.D.O.T.

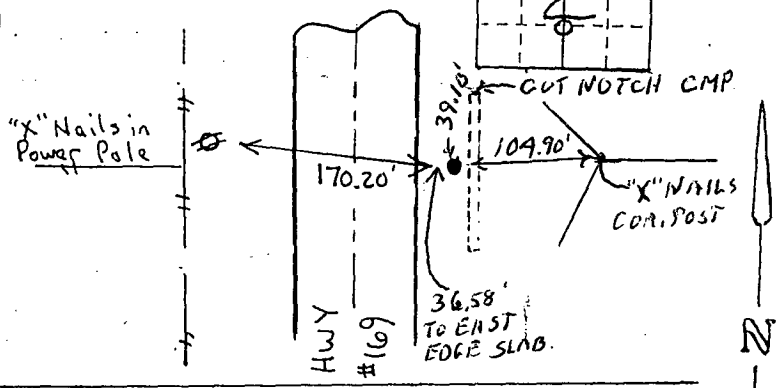
PLAN - VIEW

(Show a minimum of three reference ties to durable physical objects, relevant monuments and physical conditions that will enable recovery of the corner.)

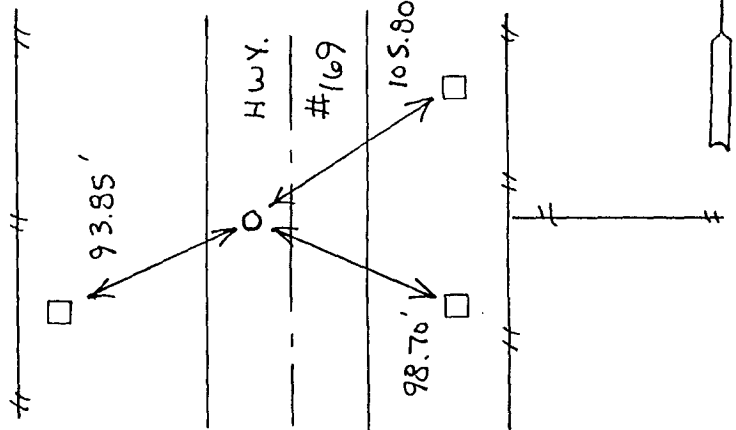
NE CORNER
NW. 1/4 SE. 1/4
SEC. 2-74-28
Fd. Conc. Monument



CENTER
SEC. 2-74-28
Fd. 5/8" Iron Pin



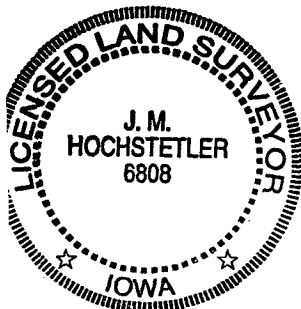
SW CORNER
NW. 1/4 SE. 1/4
SEC. 2-74-28
Set PK Nail in
A.C.C. surface



ALL TIES ARE TO
FOUND CONCRETE
REFERENCE MONUMENTS

List Corners to be Indexed

Corners	Section	Twp	Range
NE cor.	2	74N	28W
NW. 1/4 SE. 1/4	2	74N	28W
Center	2	74N	28W
SW cor.	2	74N	28W
NW. 1/4 SE. 1/4	2	74N	28W



I hereby certify that this land surveying document was prepared and the related survey work was performed by me or under my direct personal supervision and that I am a duly licensed Land Surveyor under the laws of the State of Iowa.

J.M. Hochstetler
J. M. HOCHSTETLER

License number 6808 Date 5/14/99

My license renewal date is December 31, 1999.

Pages or sheets covered by this seal: 1