

REC \$ 5<sup>00</sup>  
 AUD \$ \_\_\_\_\_  
 R.M.F. \$ 1<sup>00</sup>

COMPUTER   
 RECORDED   
 COMPARED

FILED NO. 4510  
 BOOK 2 PAGE 39  
 99 MAY -7 AM 11:04

PREPARED BY: BOLDMAN LAND SURVEYING, P.C. 521 WEST GREEN STREET, WINTERSET, IA 50273 PHONE 319-338-3308

UNITED STATES PUBLIC LAND SURVEY CORNER CERTIFICATE  
 OF

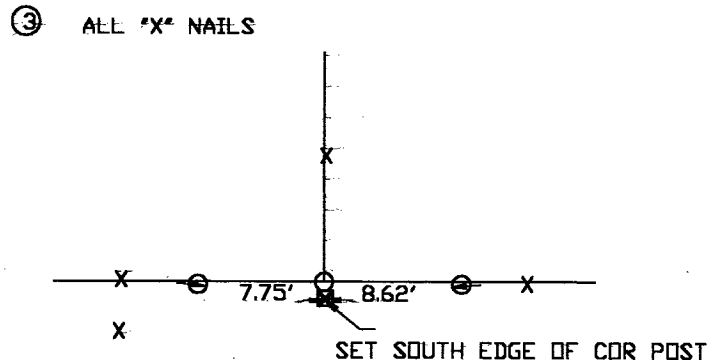
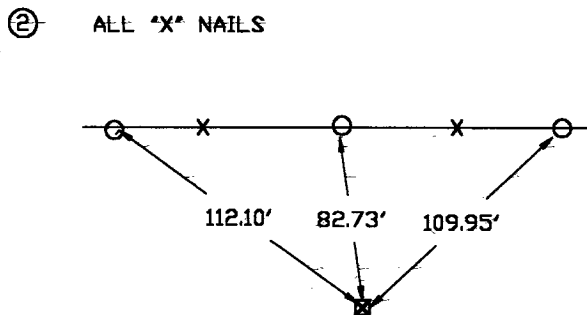
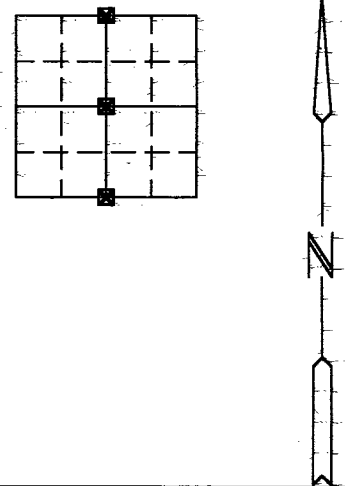
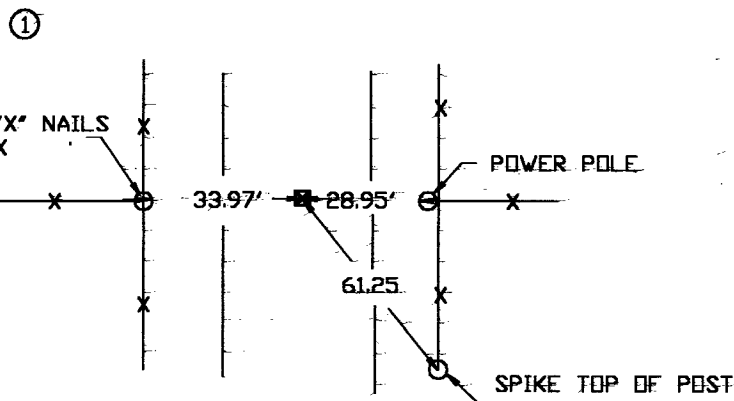
Land Survey Monuments situated in Section 8 Township 75 Range 26  
 of the Fifth Principal Meridian, MADISON County, Iowa  
 Previously recorded in NONE RECORDED in County Recorder's Office.  
 (book, page, document number, etc.)

(show reason for preparing this certificate, the evidence and detailed procedures used in establishing the corner positions and monumentation found or placed.)

Monument Description and Remarks: ① SET 1/2" PIN LS#13427 IN CL OF COUNTY ROAD IN LINE WITH FENCE WEST FOR N1/4 CORNER, ② SET 1/2" PIN LS#13427 INTERSECTION OF 1/4 SECTION CORNERS FOR CENTER SECTION, ③ FOUND AND ACCEPTED ANCIENT FENCE POST FOR S1/4 CORNER, SET 1/2" PIN LS#13427 SOUTH EDGE OF POST.

PLAN-VIEW

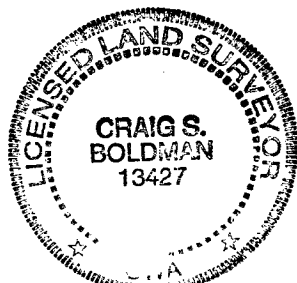
(Show a minimum of three reference ties to durable physical objects, relevant monuments and physical conditions that will enable recovery of the corner.)



I hereby certify that the survey work was completed and this certificate was prepared by me or under my direct personal supervision and that I am a duly Licensed Land Surveyor under the laws of the State of Iowa.

Signature: Craig S. Boldman  
 Craig S. Boldman

Date: 5/6/99 Reg. No. 13427



SEAL

List Corners to be Indexed

Corners	Section	Twp	Range
N1/4	8	75	26
CENTER	8	75	26
S1/4	8	75	26