

COMPUTER
RECORDED
COMPARED

FILED NO. 4403
BOOK 2 PAGE 37
99 APR 28 PM 3:47

REC \$ 5.00
AUD \$
R.M.F. \$ 1.00

MICHELLE UTSLER
RECORDER
MADISON COUNTY, IOWA

VANCE & HOCHSTETLER, P.C., CONSULTING ENGINEERS, WINTERSSET, IOWA (515) 462-3995
CHARLES T. VANCE, 110 West Green St., Winterset, Iowa, 50273
JAMES M HOCHSTETLER, 110 West Green St., Winterset, Iowa 50273

UNITED STATES PUBLIC LAND SURVEY CORNER CERTIFICATE

OF
Land Survey Monuments situated in Section 20, Township 74 NORTH, Range 27 WEST, of the Fifth Principal Meridian, MADISON County, Iowa.
Previously recorded in _____ in County Recorder's Office.
(book, page, document number, etc.)

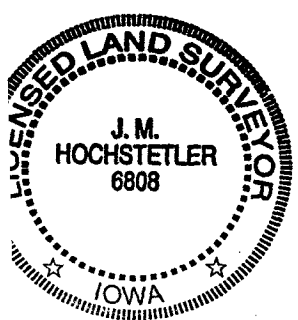
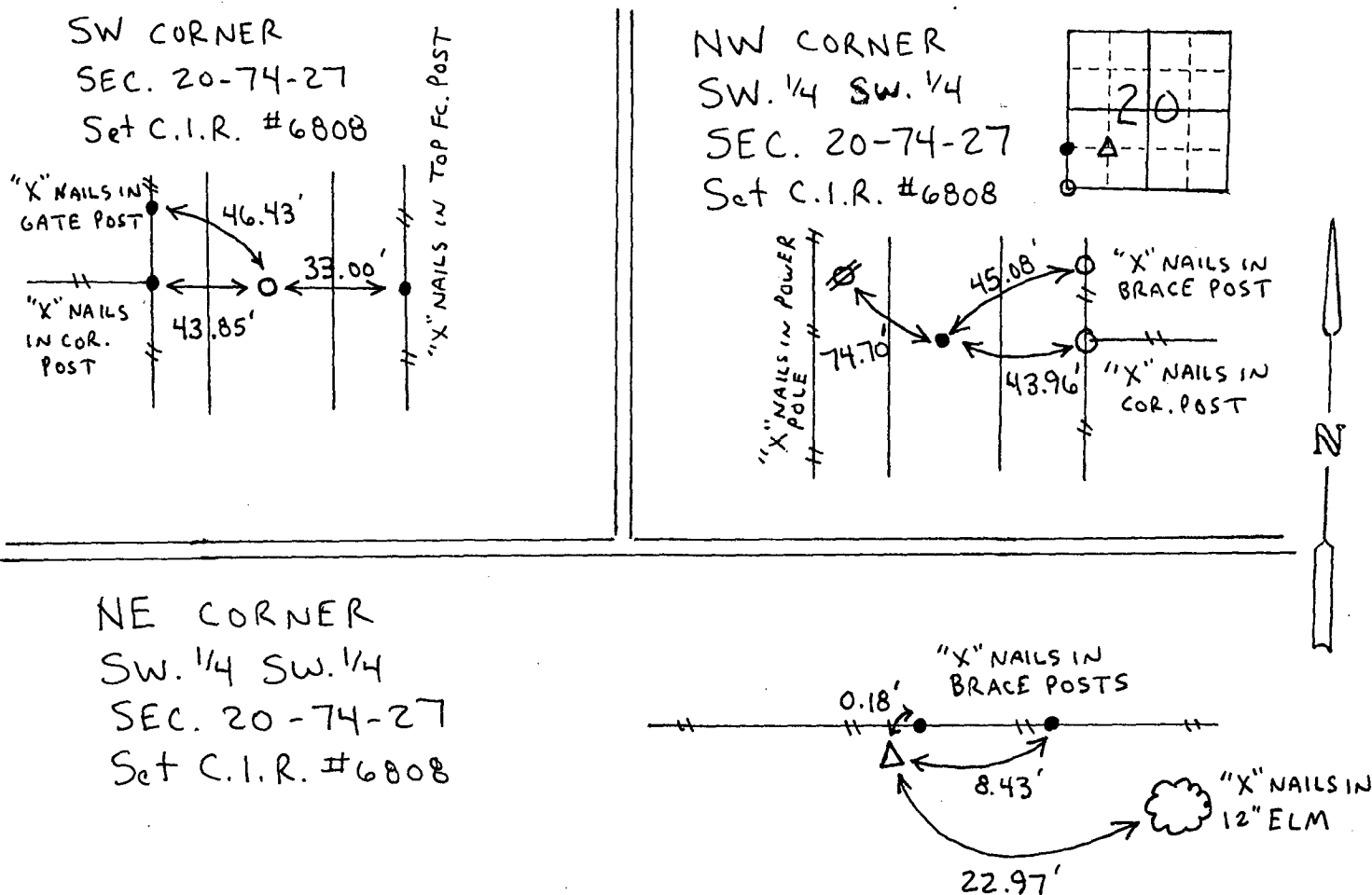
(Show reason for preparing this certificate, the evidence and detailed procedures used in establishing the the corner positions and monumentation found or placed.)

Monument Description and Remarks:

SW cor. - Set C.I.R. #6808, 33' west of East R.O.W. Fence line, in line with existing property line fence to West
NW cor. SW. 1/4 SW. 1/4 - ~~Ed.~~ nail, replaced with C.I.R. #6808 in line with existing property line fence to East.
NE cor. SW. 1/4 SW. 1/4 - Set C.I.R. #6808 at brace post in existing East-West Fenceline.

PLAN - VIEW

(Show a minimum of three reference ties to durable physical objects, relevant monuments and physical conditions that will enable recovery of the corner.)



I hereby certify that this land surveying document was prepared and the related survey work was performed by me or under my direct personal supervision and that I am a duly licensed Land Surveyor under the laws of the State of Iowa.
J.M. Hochstetler
J. M. HOCHSTETLER
License number 6808 Date 4/28/99
My license renewal date is December 31, 1999.
Pages or sheets covered by this seal: 1

List Corners to be Indexed

Corners	Section	Twp	Range
SW cor.	20	74N	27W
NW cor. SW. 1/4 SW. 1/4	20	74N	27W
NE cor SW. 1/4 SW. 1/4	20	74N	27W