

REC \$ 5⁰⁰ COMPUTER
AUD \$ RECORDED
R.M.F. \$ 1⁰⁰ COMPARED

FILED NO. 4305
BOOK 2 PAGE 36
99 APR 23 PM 12:38

MICHELLE UTSLER
RECORDER
IOWA

VANCE & HOCHSTETLER, P.C., CONSULTING ENGINEERS, WINTERSSET, IOWA (515) 462-3995
CHARLES T. VANCE, 110 West Green St., Winterset, Iowa, 50273
JAMES M HOCHSTETLER, 110 West Green St., Winterset, Iowa 50273

UNITED STATES PUBLIC LAND SURVEY CORNER CERTIFICATE

OF
Land Survey Monuments situated in Section 22, Township 76 NORTH, Range 27 WEST, of the Fifth Principal Meridian, MADISON County, Iowa.
Previously recorded in _____ in County Recorder's Office.
(book, page, document number, etc.)

(Show reason for preparing this certificate, the evidence and detailed procedures used in establishing the the corner positions and monumentation found or placed.)

Monument Description and Remarks:

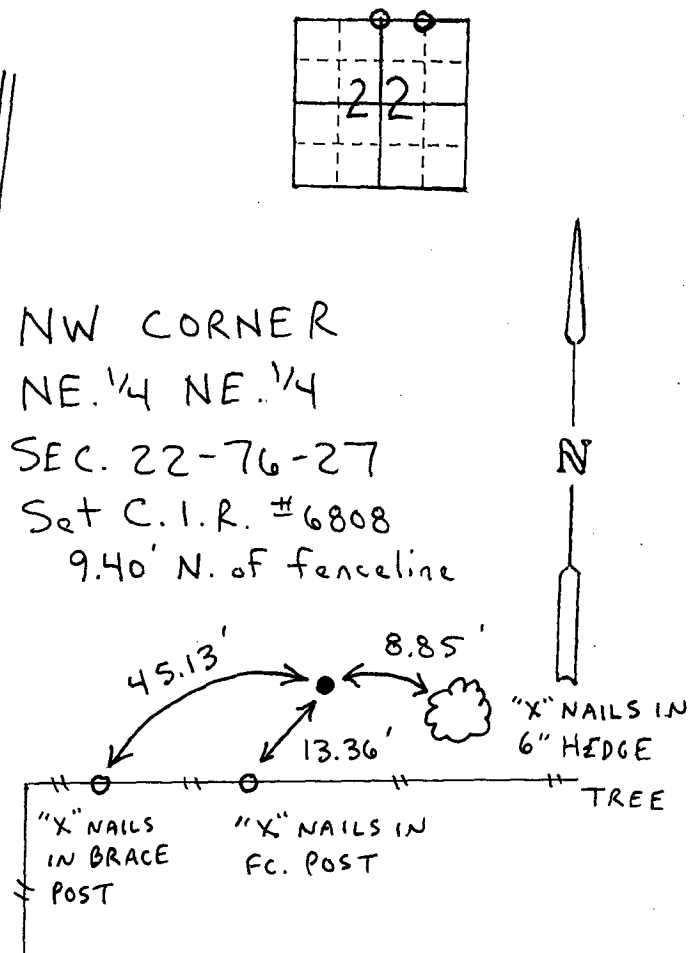
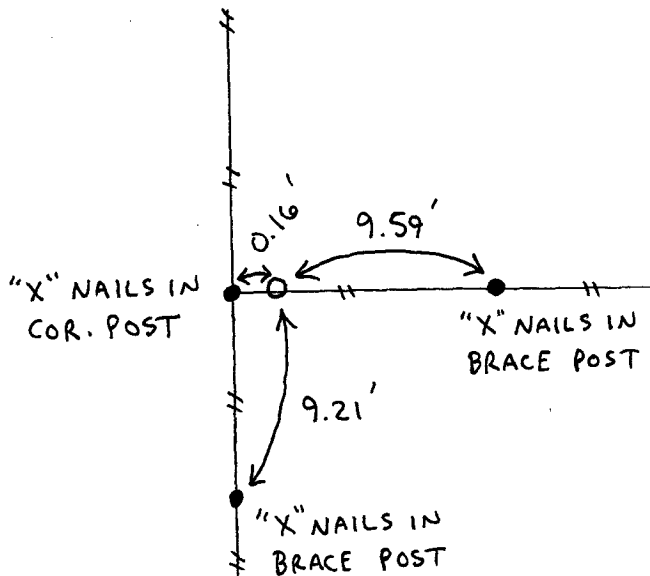
N. 1/4 cor. - Fd. C.I.R. #5041 at existing fence corner.

NW cor. NE 1/4 NE 1/4 - Set C.I.R. #6808 at midpoint between N. 1/4 cor. and NE cor. (both found corners).

PLAN - VIEW

(Show a minimum of three reference ties to durable physical objects, relevant monuments and physical conditions that will enable recovery of the corner.)

NORTH 1/4 COR.
SEC. 22-76-27
Fd. C.I.R. #5041



List Corners to be Indexed

Corners	Section	Twp	Range
N. 1/4 cor.	22	76N	27W
NW cor.	22	76N	27W
NE 1/4 NE 1/4	22	76N	27W

I hereby certify that this land surveying document was prepared and the related survey work was performed by me or under my direct personal supervision and that I am a duly licensed Land Surveyor under the laws of the State of Iowa.

J. M. Hochstetler
J. M. HOCHSTETLER

License number 6808 Date 4/14/99
My license renewal date is December 31, 1999.

Pages or sheets covered by this seal: 1

