

COMPUTER
RECORDED
COMPARED

FILED NO. 5216

BOOK 2 PAGE 49

99 JUN '22 AM 8:09

REC \$ 5.00
AUD \$
R.M.F. \$ 1.00

MICHELLE UTSLER
RECORDER
MADISON COUNTY, IOWA

PREPARED BY: BOLDMAN LAND SURVEYING, P.C. 521 WEST GREEN STREET, WINNERSSET, IA 50273 PHONE (515)462-3308

UNITED STATES PUBLIC LAND SURVEY CORNER CERTIFICATE

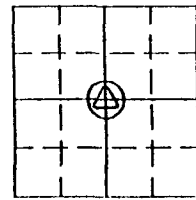
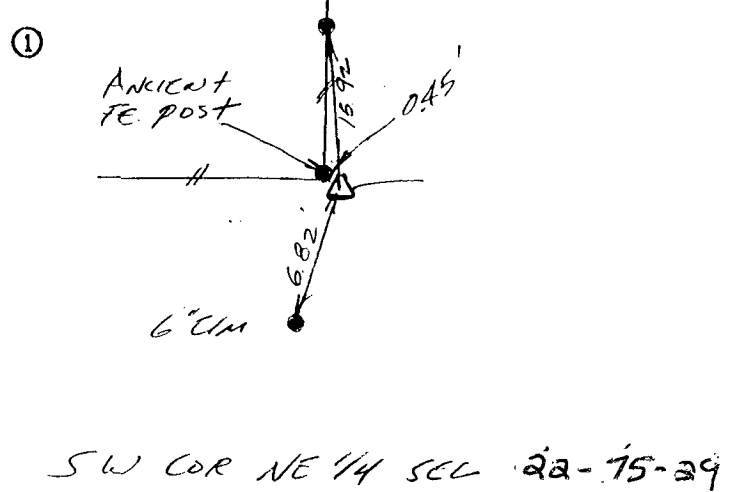
OF
Land Survey Monuments situated in Section 22 Township 75N Range
29 W of the Fifth Principal Meridian, Madison County, Iowa
Previously recorded in None in County Recorder's Office.
(book, page, document number, etc.)

(show reason for preparing this certificate, the evidence and detailed procedures used in establishing the corner positions and monumentation found or placed.)

Monument Description and Remarks: Accepted ancient fence post.
Checked dist North to NE 1/4 fence post
from 1877 survey. County Surveyor set cor.
stones for S 1/2 NE 1/4 in 1877.

PLAN-VIEW

(Show a minimum of three reference ties to durable physical objects, relevant monuments and physical conditions that will enable recovery of the corner.)



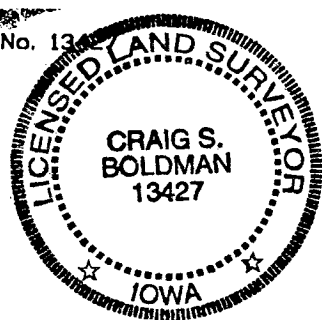
②

③

I hereby certify that the survey work was completed and this certificate was prepared by me or under my direct personal supervision and that I am a duly Licensed Land Surveyor under the laws of the State of Iowa

Signature: Craig S. Boldman
Craig S. Boldman

Date: 4/21/99 Reg. No. 13



SEAL

List Corners to be Indexed

Corners Section Twp Range

SW cor 22 75 29
NE 1/4