

COMPUTER
RECORDED
COMPARED

FILED NO. 3792
BOOK 2 PAGE 29

REC \$ 5.00
AUD \$ _____
R.M.F. \$ 7.00

99 MAR 18 PM 3:23
MICHELLE UTSLER
RECORDER
MADISON COUNTY, IOWA

VANCE & HOCHSTETLER, P.C., CONSULTING ENGINEERS, WINTERSSET, IOWA (515) 462-3995
CHARLES T. VANCE, 110 West Green St., Winterset, Iowa, 50273
JAMES M HOCHSTETLER, 110 West Green St., Winterset, Iowa 50273

UNITED STATES PUBLIC LAND SURVEY CORNER CERTIFICATE

OF
Land Survey Monuments situated in Section 1, Township 75 NORTH, Range 27 WEST, of the Fifth Principal Meridian, MADISON County, Iowa.
Previously recorded in _____ in County Recorder's Office.
(book, page, document number, etc.)

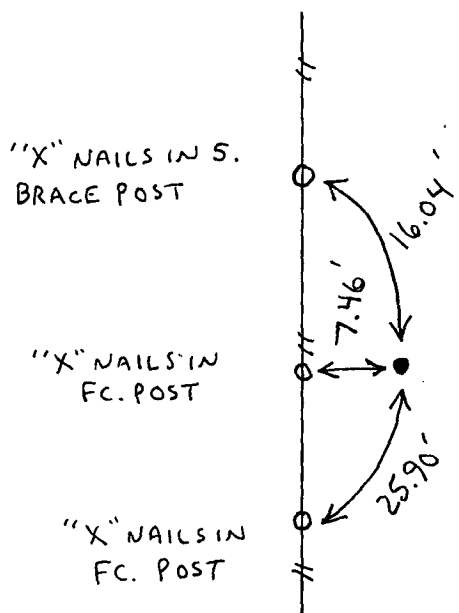
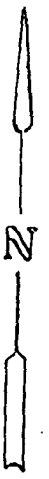
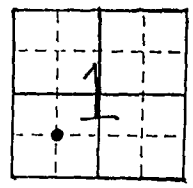
(Show reason for preparing this certificate, the evidence and detailed procedures used in establishing the the corner positions and monumentation found or placed.)

Monument Description and Remarks:
NE cor. SW. 1/4 SW. 1/4 - Set C.I.R. #6808 at split between
SE cor. SW. 1/4 SW. 1/4 (fd. #7995) and NE cor. NW. 1/4 SW. 1/4
(fd. #7995)

PLAN - VIEW

(Show a minimum of three reference ties to durable physical objects, relevant monuments and physical conditions that will enable recovery of the corner.)

NE CORNER
SW. 1/4 SW. 1/4
SEC. 1-75-27
Set C.I.R. #6808



List Corners to be Indexed

Corners	Section	Twp	Range
NE cor. SW. 1/4 SW. 1/4	1	75N	27W



I hereby certify that this land surveying document was prepared and the related survey work was performed by me or under my direct personal supervision and that I am a duly licensed Land Surveyor under the laws of the State of Iowa.
J.M. Hochstetler
J.M. HOCHSTETLER
License number 6808
Date 3/15/99
My license renewal date is December 31, 1999.
Pages or sheets covered by this seal: 1