

REC \$ 5<sup>00</sup>  
 AUD \$ 1<sup>00</sup>  
 R.M.F. \$ 1<sup>00</sup>

COMPUTER   
 RECORDED   
 COMPARED

J.Clifton Froman, L.S.#12068, Ryken Engineering, 711 PARK Avenue, Ackley, IA 50601-515-847-3233

# UNITED STATES PUBLIC LAND CORNER CERTIFICATE OF

Land Survey Monuments situated in Section 34, Township 77N, Range 27W, of the Fifth Principal Meridian, MADISON County, Iowa, Previously recorded in \_\_\_\_\_ in County Recorder's Office

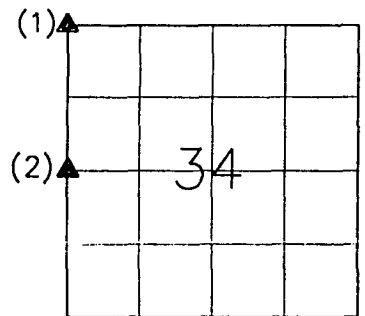
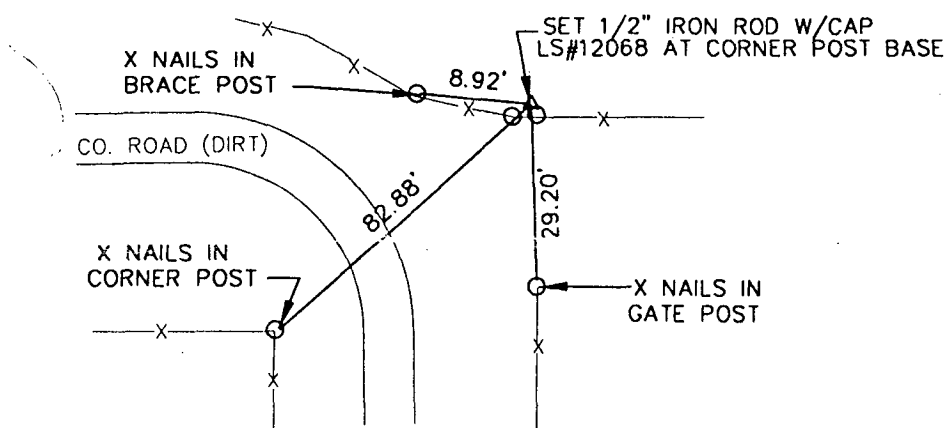
(Show reason for preparing this certificate, the evidence and detailed procedures used in establishing the corner positions and monumentation found or placed.)

Monument Description and Remarks: (1) NORTHWEST CORNER- SET 1/2" IRON ROD WITH PLASTIC SURVEYOR'S CAP-LS#12068 AT BASE OF FENCE CORNER POST

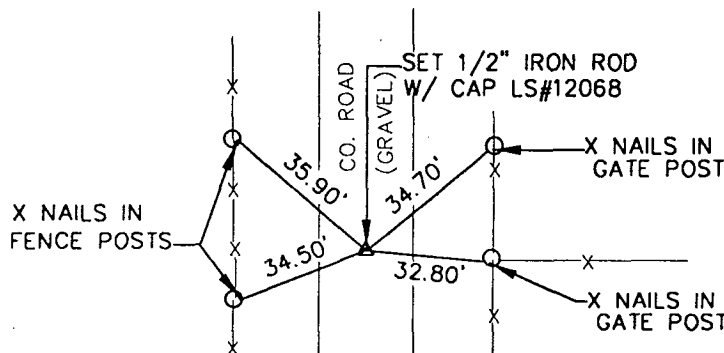
(2) SET 1/2" IRON ROD WITH PLASTIC SURVEYOR'S CAP- LS#12068 AT SPLIT OF ROAD RIGHT-OF-WAY IN LINE WITH 1/2 SECTION LINE FENCE EQUADISTANT FROM (1) AND FOUND STONE AT SW CORNER SECTION 34 (FROM EXISTING CORNER RECORD).

### PLAN VIEW

(Show a minimum of three reference ties to durable physical objects, relevant monuments, and physical conditions that will enable recovery of the corner.)



(1) NORTHWEST CORNER SECTION 34-T77N-R27W

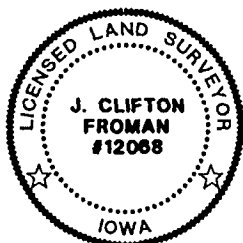


(2) WEST 1/4 CORNER SECTION 34-T77N-R27W

FILED NO. 3781  
 BOOK 2 PAGE 27  
 99 MAR 18 PM 1:32  
 MICHELLE UTSLER  
 RECORDER  
 MADISON COUNTY, IOWA

I hereby certify that this land surveying document was prepared and the related survey work was performed by me or under my direct personal supervision and that I am a duly licensed Land Surveyor under the laws of the State of Iowa.

J. Clifton Froman  
 J. CLIFTON FROMAN, L.S.  
 Date: 2/19/99 License number: 12068  
 My license renewal date is December 31, ~~1999~~ 2000



Corners	List Corners to be Indexed		
	Section	Twp	Range
NW	34	77N	27W
WEST 1/4	34	77N	27W