

MICHELLE UTSLER
RECORDER
MADISON COUNTY, IOWA

COMPUTER
RECORDED
COMPARED

REC \$ 5.00
AUD \$ _____
R.M.F. \$ 1.00

RETURN TO SNYDER & ASSOCIATES, INC. 501 SW ORALABOR ROAD, ANKENY, IOWA 50021

UNITED STATES PUBLIC LAND SURVEY CORNER CERTIFICATE

OF

Land Survey Monuments situated in Section 10, Township 75, Range 27, of the Fifth Principal Meridian, MADISON County, Iowa. Previously recorded in N/A in County Recorder's Office.
(book, page, document number, ect.)

(Show reason for preparing this certificate, the evidence and detailed procedures used in establishing the corner positions and monumentation found or placed.)

Monument Description and Remarks:

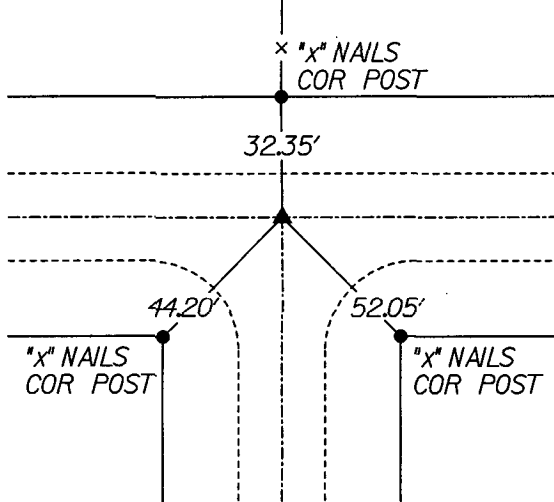
E1/4 COR: FOUND I.PIN @ CENTERLINE OF ROADS USING OLD COUNTY TIES & LOCATOR

NE COR OF THE SE1/4 SE1/4: SET REBAR WITH CAP *11804 USING THE SPLIT BETWEEN THE E1/4 COR AND THE SE COR - THE ABOVE DESCRIBED LOCATION WAS USED DUE TO THERE BEING NO 1/4 LINE FENCES AND IT FIT WITH THE CENTERLINE OF ROAD

Plan-View

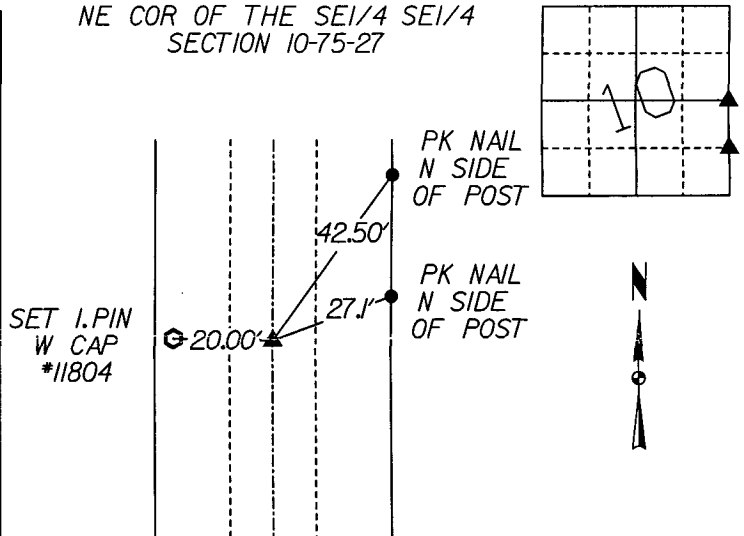
(Show a minimum of three reference ties to durable physical objects, relevant monuments and physical conditions that will enable recovery of the corner.)

E1/4 COR SECTION 10-75-27

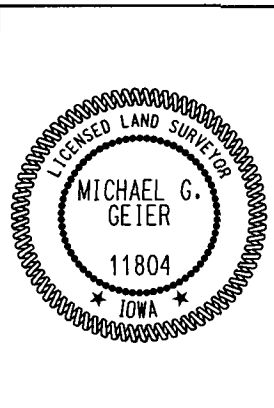


FND I.PIN

NE COR OF THE SE1/4 SE1/4 SECTION 10-75-27



SET I.PIN WITH CAP *11804



I hereby certify that this land surveying document was prepared and the related surveying work was performed by me or under my direct supervision and that I am a duly licensed Land Surveyor under the laws of the State of Iowa.

Michael G. Geier 3-16-99
Michael G. Geier, L.S. Date

License Number 11804

My License Renewal Date is December 31, 1999

Pages or sheets covered by this seal:

List Corners to be Indexed

Corners	Section	Twp	Range
E1/4 COR	10	75	27
NE COR	10	75	27
SE1/4 SE1/4			