

COMPUTER
 RECORDED
 COMPARED

FILED NO. 3208
 BOOK 2 PAGE 20
 99 FEB -5 AM 11:58

REC \$ 5
 AUD \$ 10
 R.M.F. \$ 10

MICHELLE UTSLER
 RECORDER
 MADISON COUNTY, IOWA

VANCE & HOCHSTETLER, P.C., CONSULTING ENGINEERS, WINTERSSET, IOWA (515) 462-3995
 CHARLES T. VANCE, 110 West Green St., Winterset, Iowa, 50273
 JAMES M HOCHSTETLER, 110 West Green St., Winterset, Iowa 50273

UNITED STATES PUBLIC LAND SURVEY CORNER CERTIFICATE

OF
 Land Survey Monuments situated in Section 13, Township 76 North, Range 28 West, of the Fifth Principal Meridian, MADISON County, Iowa.
 Previously recorded in _____ in County Recorder's Office.
 (book, page, document number, etc.)

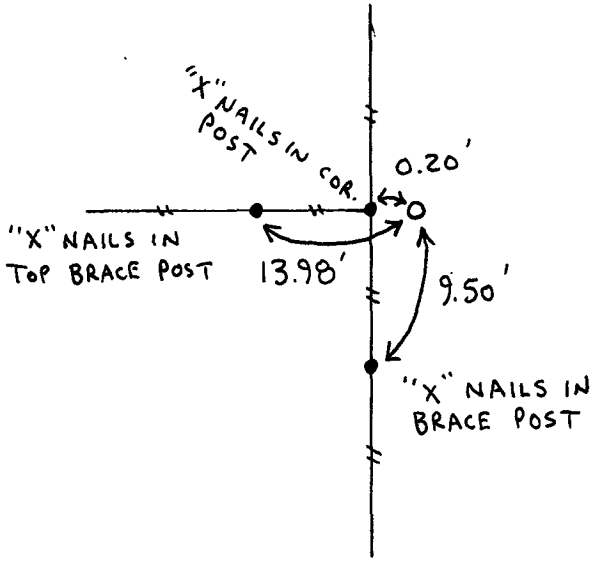
(Show reason for preparing this certificate, the evidence and detailed procedures used in establishing the the corner positions and monumentation found or placed.)

Monument Description and Remarks:
SW cor. SE. 1/4 NE. 1/4 - Set C.I.R. #6808 at existing fence corner.
SW cor. NE. 1/4 NE. 1/4 - Set C.I.R. #6808 at split between SW cor. SE. 1/4 NE. 1/4 (set corner) and NW cor. NE. 1/4 NE. 1/4 (Found corner)

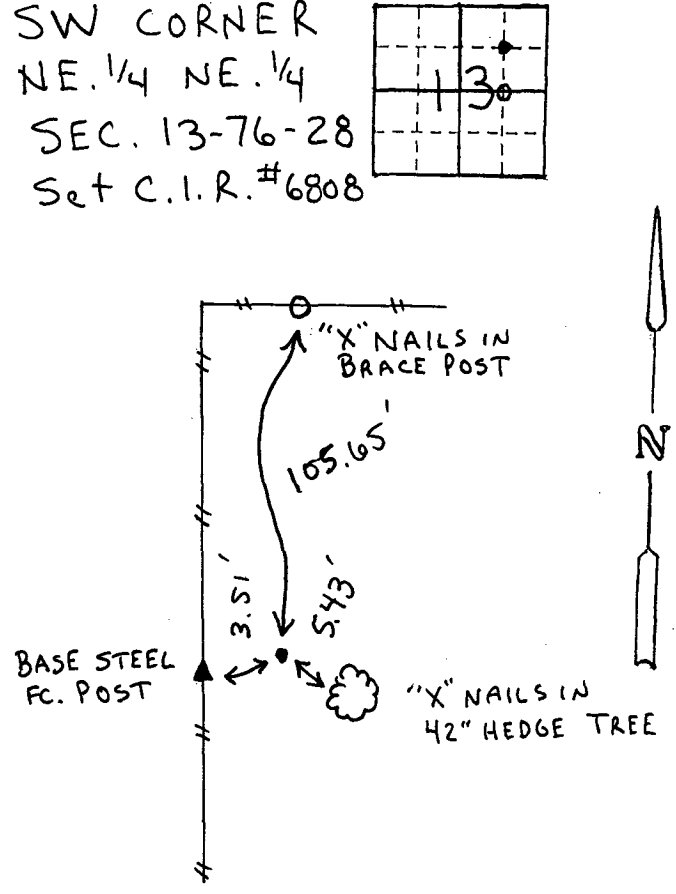
PLAN - VIEW

(Show a minimum of three reference ties to durable physical objects, relevant monuments and physical conditions that will enable recovery of the corner.)

SW CORNER
 SE. 1/4 NE. 1/4
 SEC. 13-76-28
 Set C.I.R. #6808



SW CORNER
 NE. 1/4 NE. 1/4
 SEC. 13-76-28
 Set C.I.R. #6808



I hereby certify that this land surveying document was prepared and the related survey work was performed by me or under my direct personal supervision and that I am a duly licensed Land Surveyor under the laws of the State of Iowa.
J.M. Hochstetler
 J.M. HOCHSTETLER
 License number 6808 Date 2/4/99
 My license renewal date is December 31, 1999.
 Pages or sheets covered by this seal: 1

List Corners to be Indexed

Corners	Section	Twp	Range
SW cor. SE. 1/4 NE. 1/4	13	76N	28W
SW cor. NE. 1/4 NE. 1/4	13	76N	28W