

REC \$ 5.00  
AUD \$ \_\_\_\_\_  
R.M.F. \$ 1.00

COMPUTER   
RECORDED   
COMPARED

FILED NO. 3207  
BOOK 2 PAGE 19

Prepared By: J. Brian Morrissey, Morrissey Surveying, 1926 Pammel Park Road, Winterset, Ia. 50273, Tel. (515) 462-2166

99 FEB 5 AM 10 32  
RECORDED  
MADISON COUNTY, IOWA

# UNITED STATES PUBLIC LAND SURVEY CORNER CERTIFICATE OF

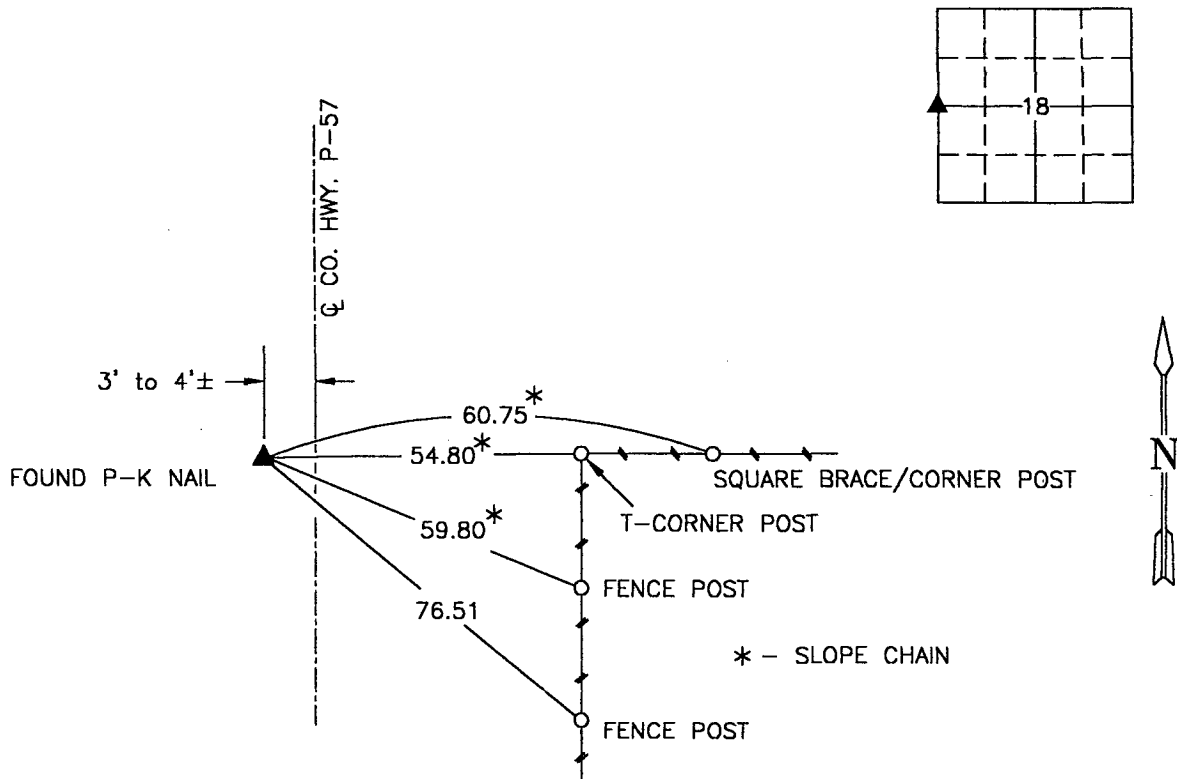
Land Survey Monuments situated in Section 18, Township 76 N, Range 28 W, of the Fifth Principal Meridian, Madison County, Iowa.  
Previously recorded in Book 1, Page 234 in County Recorders Office.  
(book, page, document number, etc.)

(Show reason for preparing this certificate, the evidence and detailed procedures used in establishing the corner positions and monumentation found or placed.)

Monument Description and Remarks: Found P-K nail. Madison County Engineer's Office had recently set from recorded Section Corner Certificate. Accepted Position.

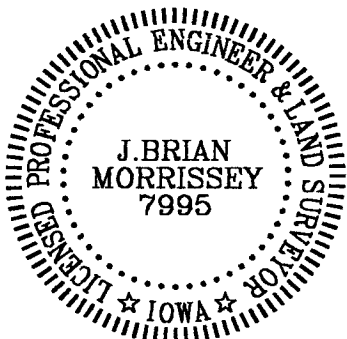
## PLAN VIEW

(Show a minimum of three reference ties to durable physical objects, relevant monuments and physical conditions that will enable recovery of the corner.)



SW. COR., NW. 1/4, SEC. 18

NOTE: ALL TIES TO "X" NAILS UNLESS NOTED



I hereby certify that the survey work was completed and this certificate was prepared by me or under my direct personal supervision and that I am a duly Licensed Land Surveyor under the laws of the State of Iowa.

Signature: J. Brian Morrissey Date: 2/5/99  
J. Brian Morrissey

License number 7995.

My license renewal date is December 31, 1999.

270-99-2