

COMPUTER
RECORDED
COMPARED

FILED NO. 3798
BOOK 2 PAGE 35

99 MAR 18 PM 3: 34

REC \$ 5.00
AUD \$
R.M.F. \$ 1.00

MICHELLE UTSLER
RECORDER
MADISON COUNTY, IOWA

VANCE & HOCHSTETLER, P.C., CONSULTING ENGINEERS, WINTERSSET, IOWA (515) 462-3995
CHARLES T. VANCE, 110 West Green St., Winterset, Iowa, 50273
JAMES M HOCHSTETLER, 110 West Green St., Winterset, Iowa 50273

UNITED STATES PUBLIC LAND SURVEY CORNER CERTIFICATE

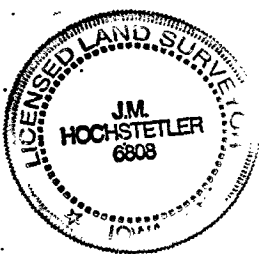
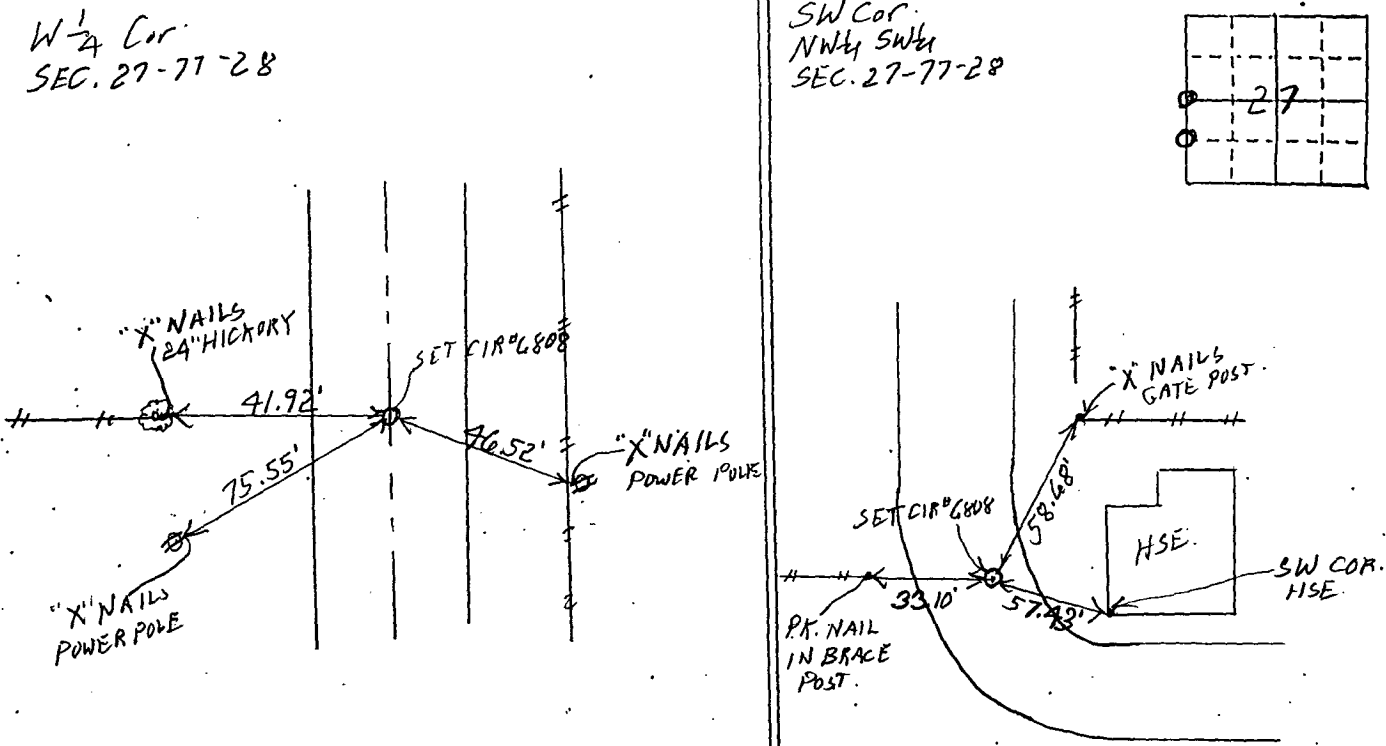
Land Survey Monuments situated in Section 27 OF 27 Township 77 N Range 28 W of the Fifth Principal Meridian, MADISON County, Iowa.
Previously recorded in _____ in County Recorder's Office.
(book, page, document number, etc.)

(Show reason for preparing this certificate, the evidence and detailed procedures used in establishing the the corner positions and monumentation found or placed.)

Monument Description and Remarks: W 1/4 COR. SEC. 27-77-28 - Set CIR# 6808 at
Centerline of County Road right-of-way in line with property line
fence to the West
SW Cor NW 1/4 SW 1/4 SEC. 27-77-28 - Set CIR# 6808 on projection
of County Road right-of-way centerline from North end in line
with property line fence to the West.

PLAN - VIEW

(Show a minimum of three reference ties to durable physical objects, relevant monuments and physical conditions that will enable recovery of the corner.)



I hereby certify that this land surveying document was prepared and the related survey work was performed by me or under my direct personal supervision and that I am a duly licensed Land Surveyor under the laws of the State of Iowa.
J.M. Hochstetler
J.M. HOCHSTETLER
License number 6808 Date 2/26/1999
My license renewal date is December 31, 1999
Pages or sheets covered by this seal: 1

List Corners to be Indexed

Corners	Section	Twp	Range
W 1/4 Cor	27	77N	28W
SW COR. NW 1/4 SW 1/4	27	77N	28W