

COMPUTER
 RECORDED
 COMPARED

FILED NO. 3797
 BOOK 2 PAGE 34

REC \$ 5.00
 AUD \$ _____
 R.M.F. \$ 1.00

99 MAR 18 PM 3:33
 MICHELLE UTSLER
 RECORDER
 MADISON COUNTY, IOWA

VANCE & HOCHSTETLER, P.C., CONSULTING ENGINEERS, WINTERSET, IOWA (515) 462-3995
 CHARLES T. VANCE, 110 West Green St., Winterset, Iowa, 50273
 JAMES M HOCHSTETLER, 110 West Green St., Winterset, Iowa 50273

UNITED STATES PUBLIC LAND SURVEY CORNER CERTIFICATE

OF
 Land Survey Monuments situated in Section 3, Township 77 NORTH, Range 28 WEST, of the Fifth Principal Meridian, MADISON County, Iowa.
 Previously recorded in _____ in County Recorder's Office.
 (book, page, document number, etc.)

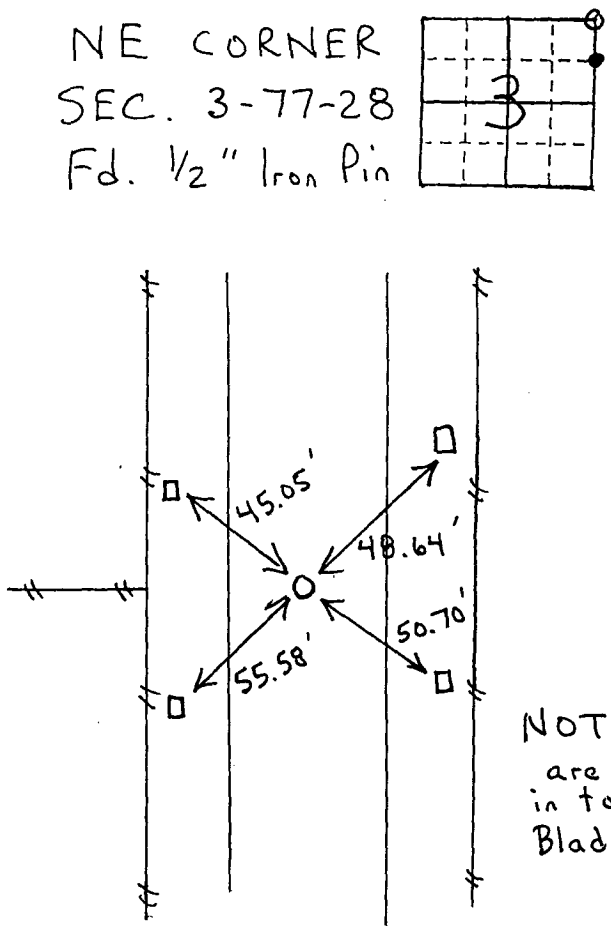
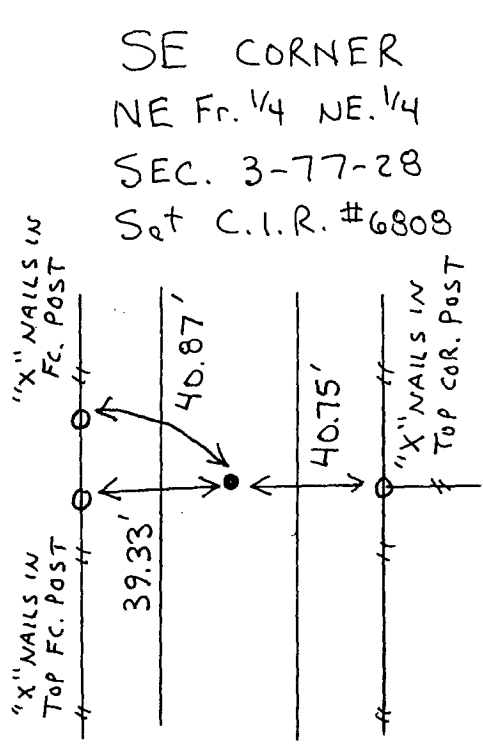
(Show reason for preparing this certificate, the evidence and detailed procedures used in establishing the the corner positions and monumentation found or placed.)

Monument Description and Remarks:

SE cor. NE Fr. 1/4 NE. 1/4 - Set C.I.R. #6808
NE cor. - Fd. 1/2" Iron Pin with Grader Blade ties set in 1980.

PLAN - VIEW

(Show a minimum of three reference ties to durable physical objects, relevant monuments and physical conditions that will enable recovery of the corner.)



NOTE: All ties are to "X" cut in tops of Grader Blades.



I hereby certify that this land surveying document was prepared and the related survey work was performed by me or under my direct personal supervision and that I am a duly licensed Land Surveyor under the laws of the State of Iowa.
J.M. Hochstetler
 J.M. HOCHSTETLER
 License number 6808
 My license renewal date is December 31, 1999.
 Date 3/15/99
 Pages or sheets covered by this seal: 1

List Corners to be Indexed

| Corners | Section | Twp | Range |
|--------------------|---------|-----|-------|
| SE cor. | 3 | 77N | 28W |
| NE Fr. 1/4 NE. 1/4 | | | |
| NE cor. | 3 | 77N | 28W |