

COMPUTER ✓
 RECORDED ✓
 COMPARED ✓
 REC \$ 5.00
 AUD \$ _____
 R.M.F. \$ 1.00

FILED NO. 2257
 2 4
 BOOK _____ PAGE _____
 98 DEC -1 PM 2:56
 MICHELLE UTSLER
 RECORDER
 MADISON COUNTY, IOWA

VANCE & HOCHSTETLER, P.C., CONSULTING ENGINEERS, WINTERSSET, IOWA (515) 462-3995
 CHARLES T. VANCE, 110 West Green St., Winterset, Iowa, 50273
 JAMES M HOCHSTETLER, 110 West Green St., Winterset, Iowa 50273

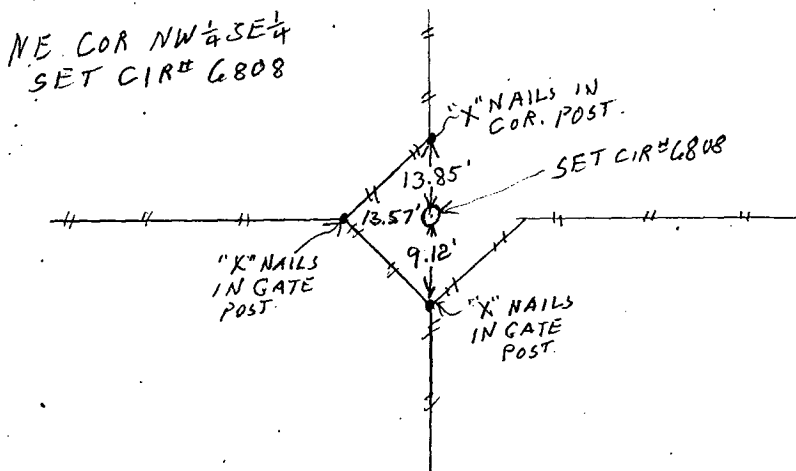
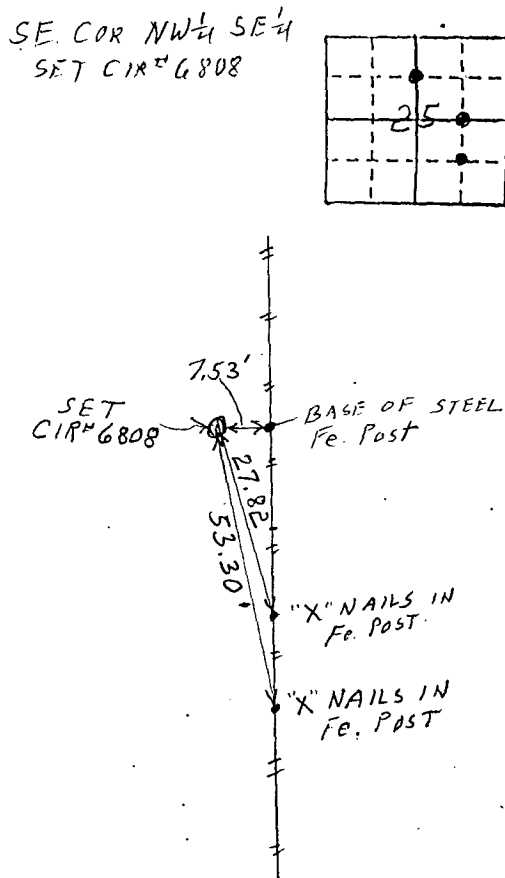
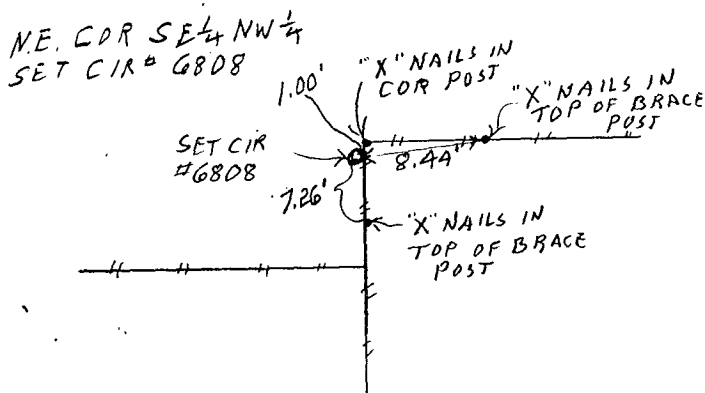
UNITED STATES PUBLIC LAND SURVEY CORNER CERTIFICATE

OF
 Land Survey Monuments situated in Section 25, Township 76 N, Range
27 W, of the Fifth Principal Meridian, MADISON County, Iowa.
 Previously recorded in _____ in County Recorder's Office.
 (book, page, document number, etc.)

(Show reason for preparing this certificate, the evidence and detailed procedures used in establishing the the corner positions and monumentation found or placed.)

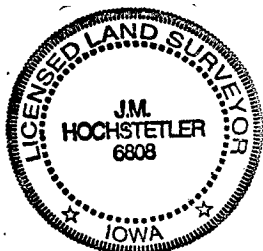
Monument Description and Remarks: NE COR SE 1/4 NW 1/4 - SET CIR #6808 AT OLD ESTABLISHED PROPERTY LINE FENCE EAST & SOUTH.
NE COR NW 1/4 SE 1/4 - SET CIR #6808 ON LINE BETWEEN CENTER OF SECTION & EAST QUARTER CORNER OF SECTION IN LINE WITH PROPERTY LINE SOUTH.
SE COR, NW 1/4 SE 1/4 - SET CIR #6808 AT MIDPOINT ON LINE BETWEEN NE COR, NW 1/4 SE 1/4 & CALCULATED SE COR SE 1/4 SE 1/4, WHICH WOULD BE IN MIDDLE RIVER,
 PLAN - VIEW

(Show a minimum of three reference ties to durable physical objects, relevant monuments and physical conditions that will enable recovery of the corner.)



List Corners to be Indexed

Corners	Section	Twp	Range
NE COR SE 1/4 NE 1/4	25	76 N	27 W
NE COR NW 1/4 SE 1/4	25	76 N	27 W
SE COR NW 1/4 SE 1/4	25	76 N	27 W



I hereby certify that this land surveying document was prepared and the related survey work was performed by me or under my direct personal supervision and that I am a duly licensed Land Surveyor under the laws of the State of Iowa.

J.M. Hochstetler
 J.M. HOCHSTETLER
 License number 6808 Date 1/11/98
 My license renewal date is December 31, 1999.
 Pages or sheets covered by this seal: 2