

COMPUTER

RECORDED

COMPARED

REC \$ 5.00

AUD \$ \_\_\_\_\_

R.M.F. \$ 1.00

FILED NO. 2763

BOOK 2 PAGE 15

99 JAN -6 PM 3: 32

MICHELLE UTSLER  
RECORDER  
MADISON COUNTY, IOWA  
(888) 964-2020

RETURN TO SNYDER & ASSOCIATES, INC. 501 SW ORALABOR ROAD, ANKENY, IOWA 50021

# UNITED STATES PUBLIC LAND SURVEY CORNER CERTIFICATE OF

Land Survey Monuments situated in Section 10, Township 75, Range 27, of the Fifth Principal Meridian, MADISON, County, Iowa. Previously recorded in N/A in County Recorder's Office. (book, page, document number, ect.)

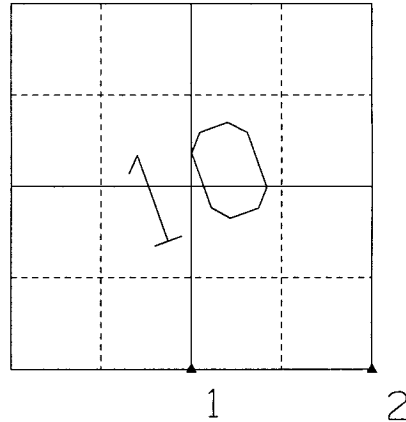
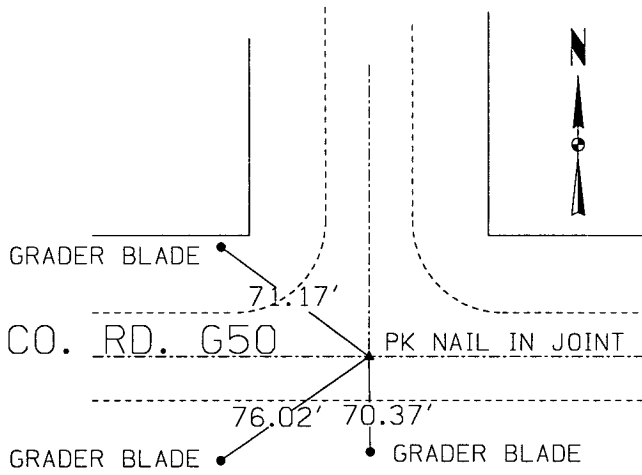
(Show reason for preparing this certificate, the evidence and detailed procedures used in establishing the corner positions and monumentation found or placed.)

Monument Description and Remarks:

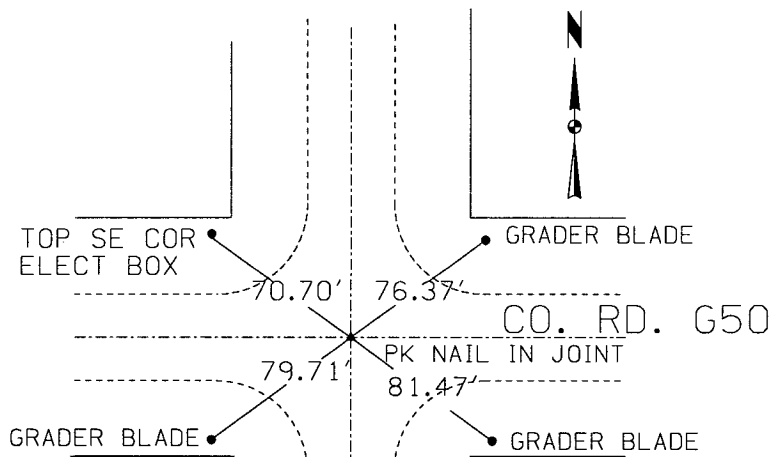
- ① FOUND PK NAIL IN @ CONCRETE JOINT USING PREVIOUS TIES FROM OLD COUNTY RECORDS.
- ② FOUND PK NAIL IN @ CONCRETE JOINT USING PREVIOUS TIES FROM OLD COUNTY RECORDS.

### Plan-View

(Show a minimum of three reference ties to durable physical objects, relevant monuments and physical conditions that will enable recovery of the corner.)



NO. 1 - S1/4 COR 10-75-27



NO. 2 - SE COR 10-75-27

I hereby certify that this land surveying document was prepared and the related surveying work was performed by me or under my direct supervision and that I am a duly licensed Land Surveyor under the laws of the State of Iowa.

*Michael G. Geier* 1-4-99  
Michael G. Geier, L.S. Date

License Number 11804

My License Renewal Date is December 31, 1999

Pages or sheets covered by this seal:

\_\_\_\_\_  
 \_\_\_\_\_  
 \_\_\_\_\_

### List Corners to be Indexed

Corners	Section	Twp	Range
① S1/4 CORNER	10	75	27
② SE CORNER	10	75	27

