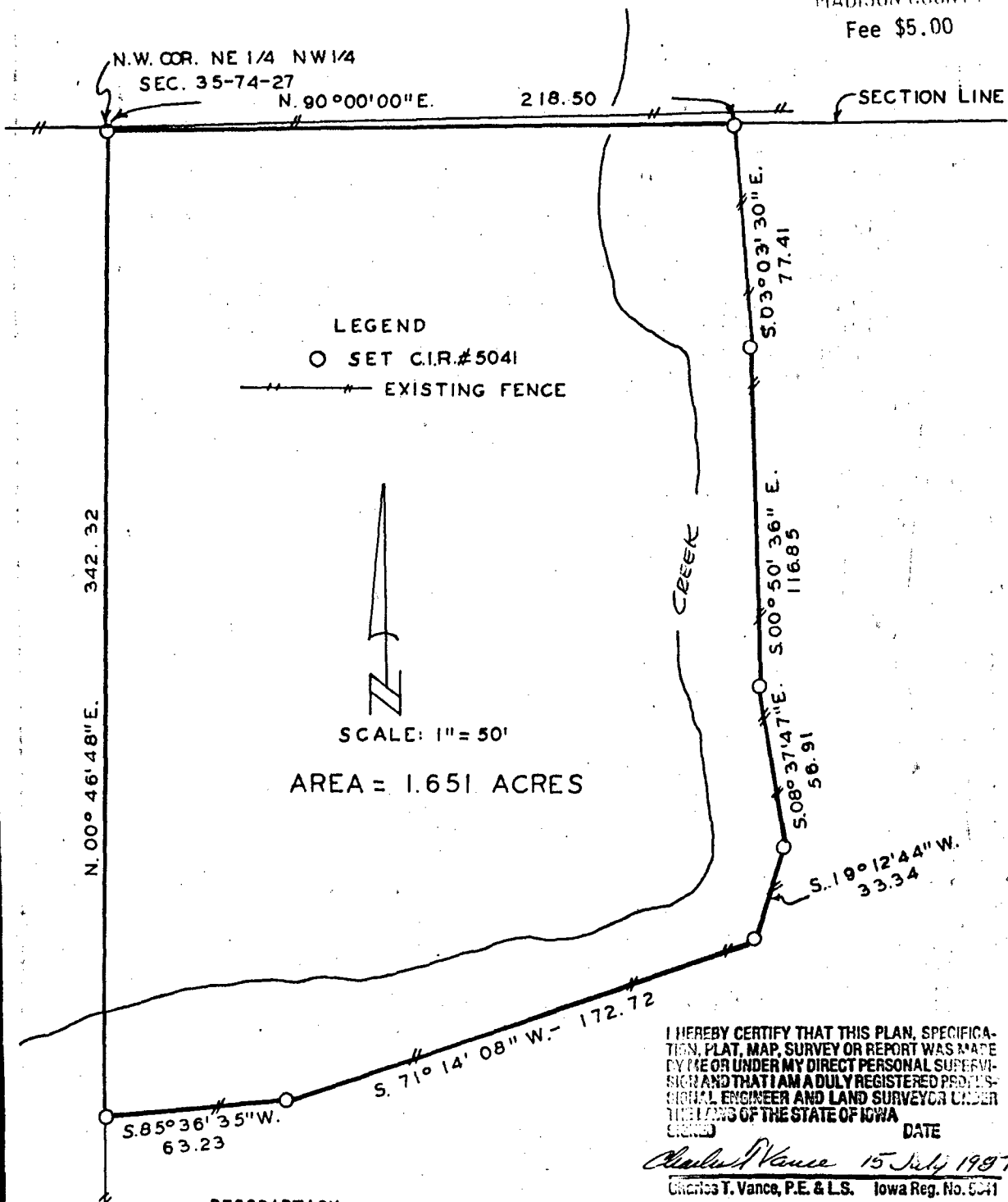


Compared

Plat of Survey for Clell Camp  
In the NE. 1/4 of the NW. 1/4 of  
Section 35, Township 74 North,  
Range 27 West of the 5th Principal  
Meridian, Madison County, Iowa.

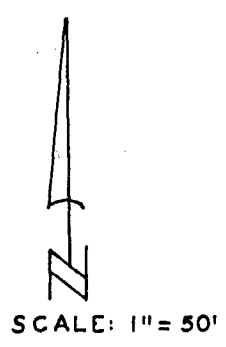
245  
FILED NO. 245  
BOOK 2 PAGE 79  
FARM PLAT  
1987 AUG 11 PM 2:47

MARY E. WELTY  
RECORDER  
MADISON COUNTY IOWA  
Fee \$5.00



IND. REC. PAGE

LEGEND  
O SET C.I.R.#5041  
--- EXISTING FENCE



AREA = 1.651 ACRES

I HEREBY CERTIFY THAT THIS PLAN, SPECIFICATION, PLAT, MAP, SURVEY OR REPORT WAS MADE BY ME OR UNDER MY DIRECT PERSONAL SUPERVISION AND THAT I AM A DULY REGISTERED PROFESSIONAL ENGINEER AND LAND SURVEYOR UNDER THE LAWS OF THE STATE OF IOWA

DATE  
*Charles T. Vance* 15 July 1987  
Charles T. Vance, P.E. & L.S. Iowa Reg. No. 5241

DESCRIPTION:

A tract of land in the Northeast Quarter of the Northwest Quarter of Section 35, Township 74 North, Range 27 West of the 5th Principal Meridian, Madison County, Iowa, more particularly described as follows:  
Beginning at the Northwest Corner of the NE. 1/4 of the NW. 1/4 of Section 35, T74N, R27W of the 5th P.M.; thence North 90°00'00" East 218.50 feet along the North line of said Section 35; thence South 03°03'30" East 77.41 feet; thence South 00°50'36" East 116.85 feet; thence South 08°37'47" East 56.91 feet; thence South 19°12'44" West 33.34 feet; thence South 71°14'08" West 172.72 feet; thence South 85°36'35" West 63.23 feet to the West line of the NE. 1/4 of the NW. 1/4 of said section 35; thence North 00°46'48" East 342.32 feet along said West line to the Point of Beginning. Said tract contains 1.651 Acres.

VANCE & HOCHSTETLER, P.C.  
CONSULTING ENGINEERS  
71 JEFFERSON STREET  
WINTERSET, IOWA 50273