

FILED NO. 59

BOOK 2 PAGE 702

96 JUL -9 AM 10:12

REC \$ 500

AUG 2

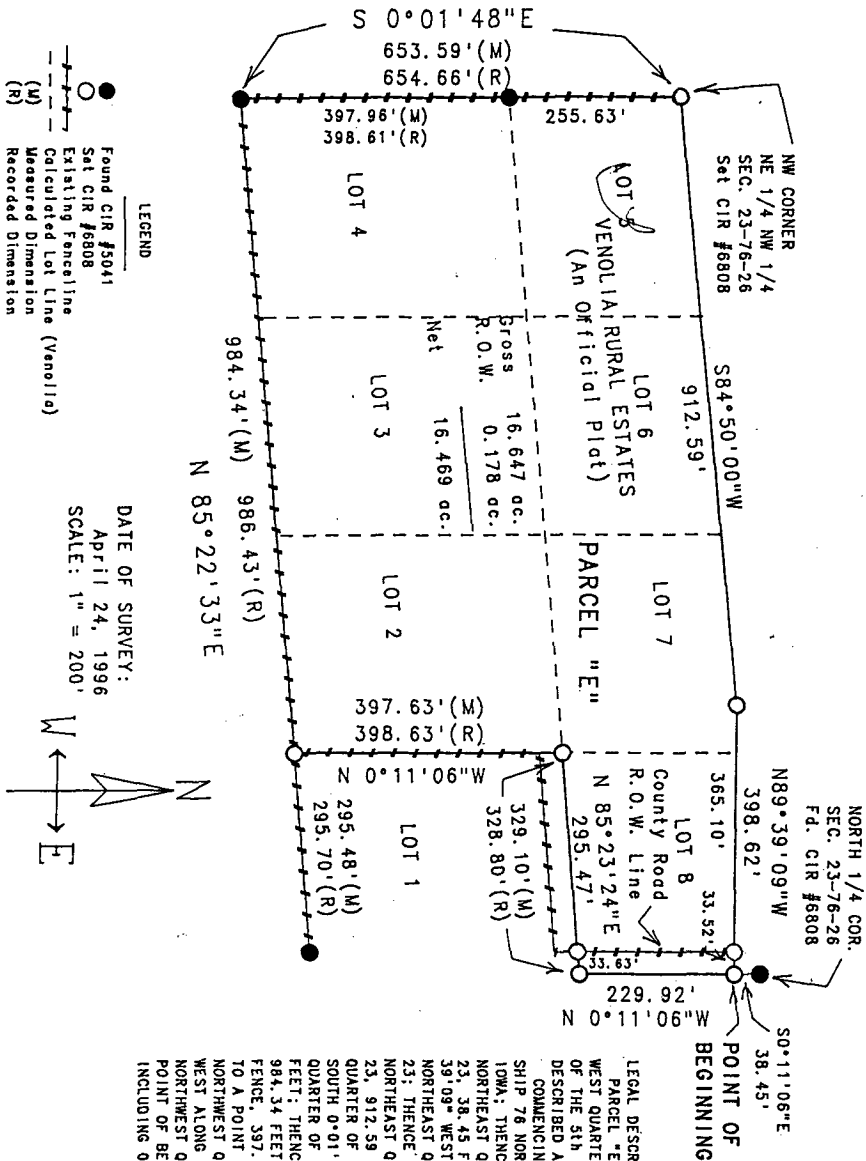
R.M.F. \$ 100

MICHELLE UTSLER
RECORDER
MADISON COUNTY, IOWA

VANCE & HOCHSTETLER, P.C. CONSULTING ENGINEERS, WINTERSSET, IOWA (515)462-3995

CHARLES T. VANCE, 110 WEST GREEN ST., WINTERSSET, IOWA 50273
JAMES M. HOCHSTETLER, 110 WEST GREEN ST., WINTERSSET, IOWA 50273

A PLAT OF SURVEY FOR MARK C. & DIANA L. FRIEND IN THE
NORTHEAST QUARTER OF THE NORTHWEST QUARTER OF SECTION 23,
TOWNSHIP 76 NORTH, RANGE 26 WEST OF THE 5th P.M., MADISON
COUNTY, IOWA.



I hereby certify that this land surveying document was prepared by me or under my direct supervision and that I am a duly Registered Land Surveyor under the laws of the State of Iowa.

Signature: *J.M. Hochstetler*

Date: 7/18/96 Reg. No. 6808

My registration renewal date is December 31, 1997

