

Prepared by C.F. Schnoor P.O. Box 94 Perry, Iowa 50220 515-465-5876

Center Sect. 14-77-27 Iron pin found at road.

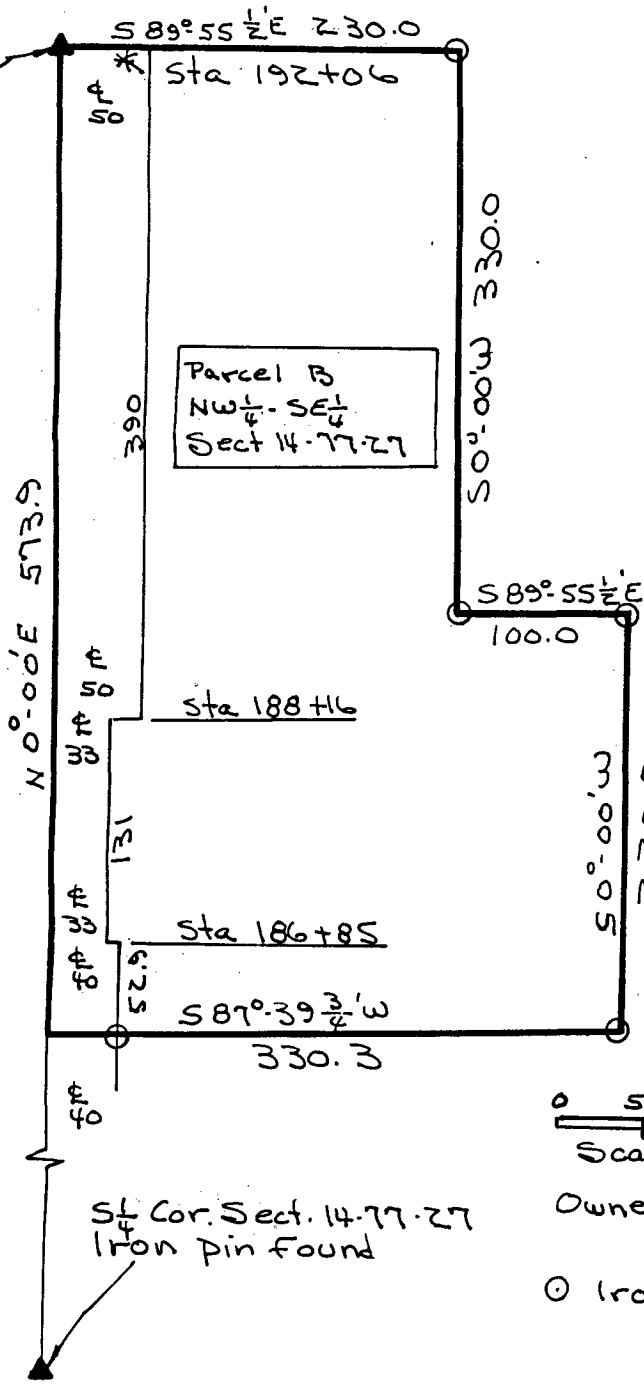
(After lawsuit - 43-235) Reproduced & Replanned Plat on 2/4/98 10-31-95

See Bk 1 - Pg 104 For State Conservation Comm's Plat.

\* Steel corner fence post, set in concrete.

REC \$ 5.00  
AUD \$  
R.M.F. \$ 1.00

COMPUTER RECORDED COMPARED



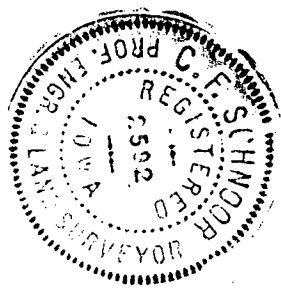
FILED NO. **1034**  
BOOK 2 PAGE 618  
95 OCT 13 AM 10:40  
MICHELLE UTSLER  
RECORDER  
MADISON COUNTY, IOWA

Scale 1" = 100'

Owners: Don & Jean Heldenbrand  
O Iron pins set

I, C.F. Schnoor, a Registered Civil Engineer and Land Surveyor, under the laws of the State of Iowa, Certify that I made a survey and this plat of the following land to wit: - Beginning at the Center Section 14-77-27 of the 5th P.M., Madison County, Iowa, thence S 89° 55 1/2' E 230.0 Feet, thence S 0° 00' W 330.0 Feet, thence S 89° 55 1/2' E 100.0 Feet, thence S 0° 00' W 230.0 Feet, thence S 87° 39 3/4' W 330.3 Feet, thence N 0° 00' E 573.9 Feet to the Point of beginning containing 3.54 acres, including 0.60 acres of County road, and hereafter called Parcel B - NW 1/4 - SE 1/4 Section 14-77-27 as shown above.

C.F. Schnoor 10-9-95  
C.F. Schnoor C.E. & L.S. #2592



Survey and plat Parcel B NW 1/4 - SE 1/4 Sect. 14-77-27 Madison County, Iowa Oct. 1995