

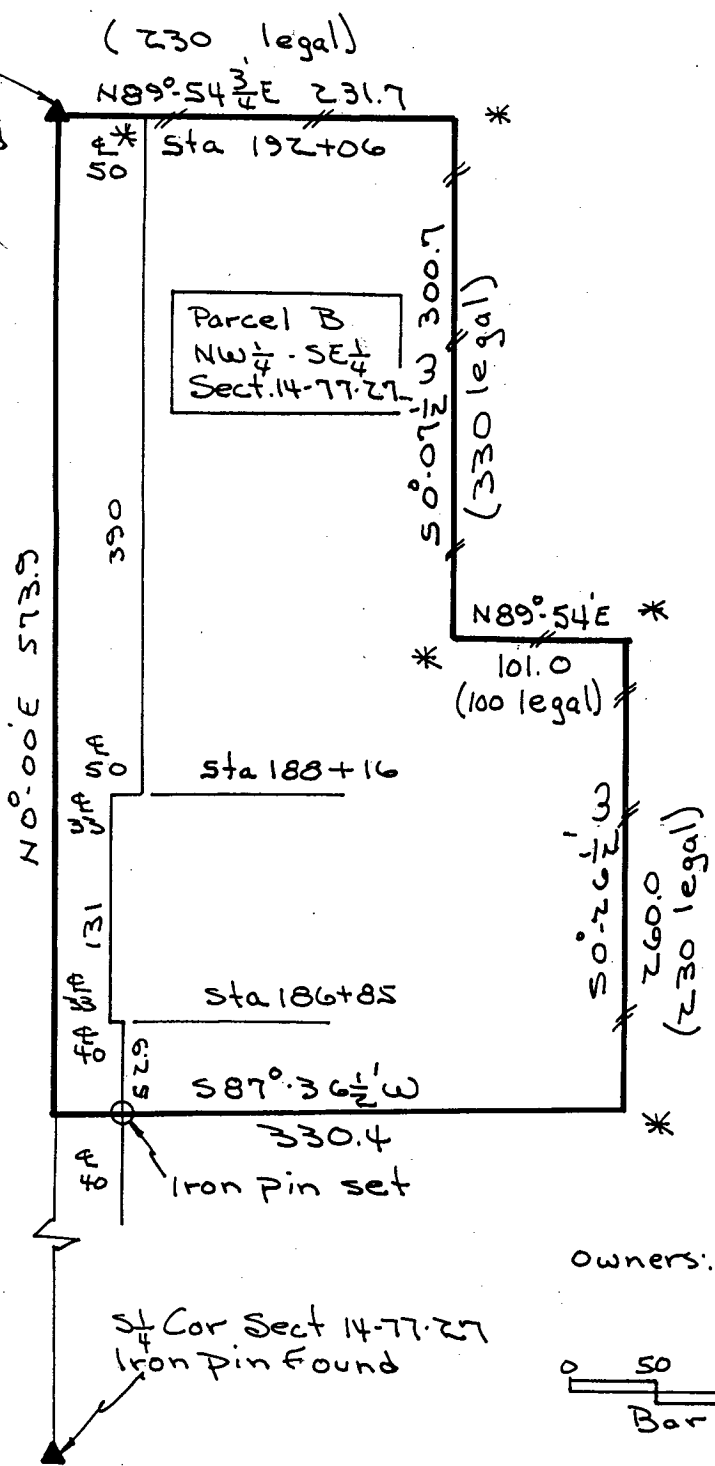
STATE OF IOWA, SS. MADISON COUNTY, IOWA

Not Corrected Plat See 2-6-18 (Alphadant 43-235) 10-31-95

Inst. No. 3605 Filed for Record this 24 day of June 19 94 at 11:00 AM Book 2 Page 478 Recording Fee \$ 6.00 Michelle Ustler, Recorder, By *Michelle Ustler* Deputy



center Section 14-77-27 Iron Pin found at road

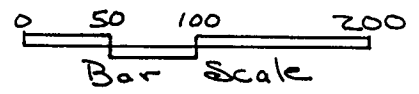


See Book 1-Pg 104 For State Conservation Comm.'s Plat.

* Existing steel Corner Fence post set in Concrete - Set by The State Conservation Comm.

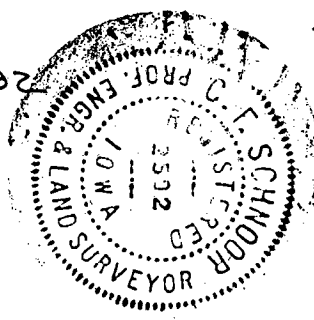
Existing fence.

Owners: Don and Jean Heidenbrand



I, C.F. Schnoor, a Registered Civil Engineer and Land Surveyor, under the Laws of The State of Iowa, Certify that I made a Survey and this plat of the following land to wit: - Beginning at the Center Section 14-77-27 N. R 27 W of the 5th P.M., Madison County, Iowa, thence N89°54 3/4 E 231.7 feet, thence S0°07 1/2 W 300.7 Feet, thence N89°54 E 101.0 feet, thence S0°26 1/2 W 260.0 Feet, thence S87°36 1/2 W 330.4 Feet, thence N0°00 E 573.9 feet to the point of beginning containing 3.62 acres, including 0.60 Acres of County road, and hereafter called Parcel B - NW 1/4 - SE 1/4 Section 14-77-27 as shown above.

C.F. Schnoor 6-20-94 C.E. & L.S. # 2592



Survey and Plat Parcel B NW 1/4 - SE 1/4 Sect. 14-77-27 Madison County, Iowa. June 1994