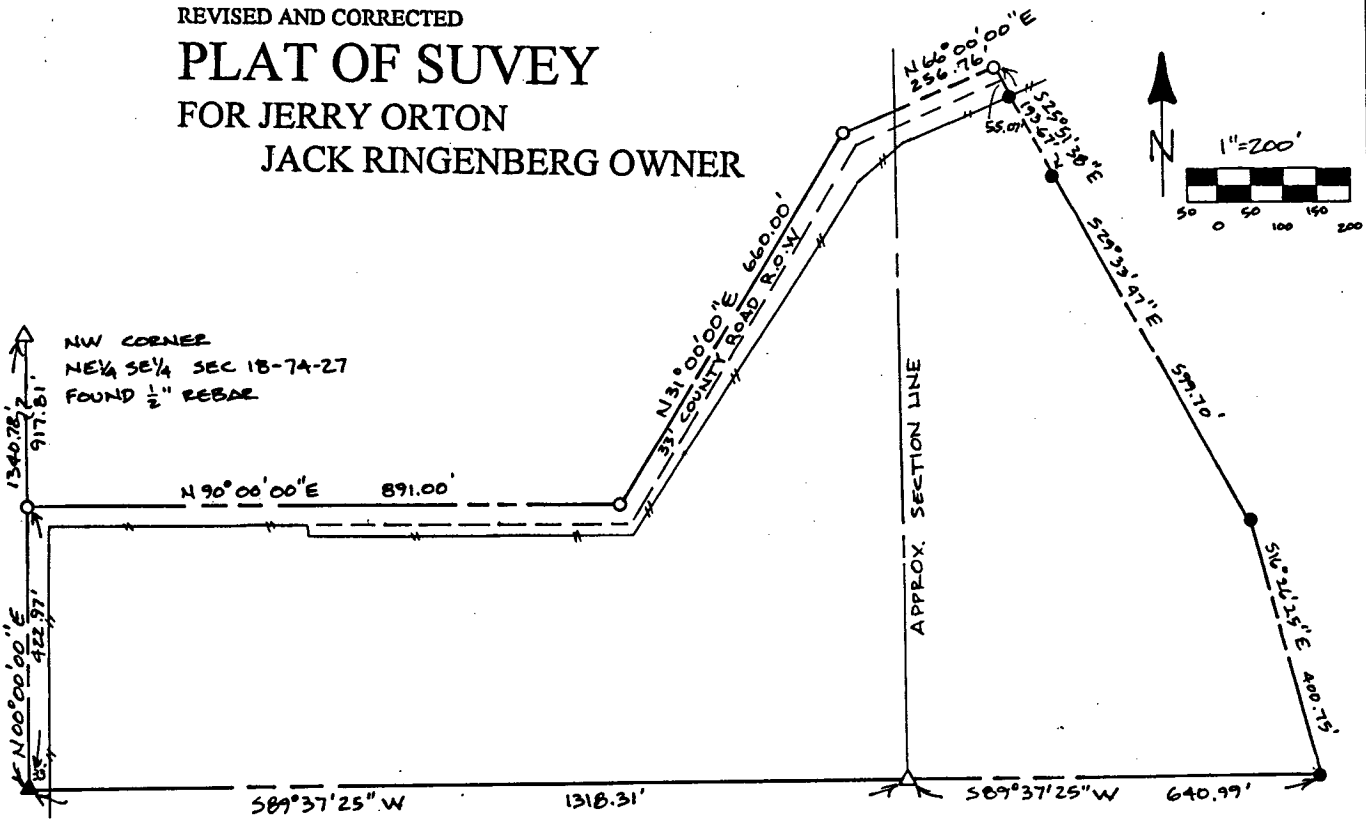


REVISED AND CORRECTED  
**PLAT OF SURVEY**  
 FOR JERRY ORTON  
 JACK RINGENBERG OWNER



	GROSS	ROW	NET
NE 1/4 SE 1/4	16.03	1.53	14.50
NW 1/4 SW 1/4	10.40	0.13	10.27
<b>TOTAL</b>	<b>26.43</b>	<b>1.66</b>	<b>24.77</b>

**PARCEL A, NE 1/4 SE 1/4 SEC 18-74-27 and  
 NW 1/4 SW 1/4 SEC 17-74-27**

NOTE: This Plat of Survey (previously recorded in book 2, page 371) revised to reflect "parcel" designation rather than "lot".

A parcel of land located in the NE 1/4 SE 1/4 of Section 18 and the NW 1/4 SW 1/4 of Section 17, Township 74 North, Range 27 West of the 5th Principal Meridian, Madison County, Iowa; more particularly described as follows:

Beginning at the SW corner of said NE 1/4 SE 1/4 of Section 18; thence along the west line of said NE 1/4 SE 1/4 N00°00'00"E, a distance of 422.97 feet; thence departing said west line and along the centerline of a county road the following three courses:

- N90°00'00"E, a distance of 891.00 feet;
  - N31°00'00"E, a distance of 660.00 feet;
  - N66°00'00"E, a distance of 256.76 feet;
- Fee \$5.00

thence departing said county road centerline S25°51'38"E, a distance of 193.67 feet; thence S29°33'47"E, a distance of 599.70 feet; thence S16°26'25"E, a distance of 400.75 feet to a point on the south line of said NW 1/4 SW 1/4 of Section 17; thence along said south line S89°37'25"W, a distance of 640.99 feet to the SW corner of said NW 1/4 SW 1/4 of Section 17; thence along the south line of said NE 1/4 SE 1/4 of Section 18 S89°37'25"W, a distance of 1318.31 feet to the Point of Beginning. Said parcel contains 26.43 acres, more or less, including 1.66 acres presently established county road right-of-way easement. Said parcel subject to all easements of record.

FILED NO. **2841**  
 BOOK 2 PAGE 390  
 93 MAY 12 PM 4:04  
 MICHELLE UTSLER  
 RECORDER  
 MADISON COUNTY, IOWA

I hereby certify that this plat and survey were made by me or under my direct supervision and that I am a duly Registered land Surveyor and Professional Engineer under the laws of the State of Iowa.

Signed: Bradley J. Skinner, P.E. & L.S. Iowa Reg. No. 11078 Date: MAY 5, 1993

My registration expires December 31, 1994.



0057M

See original 2-371