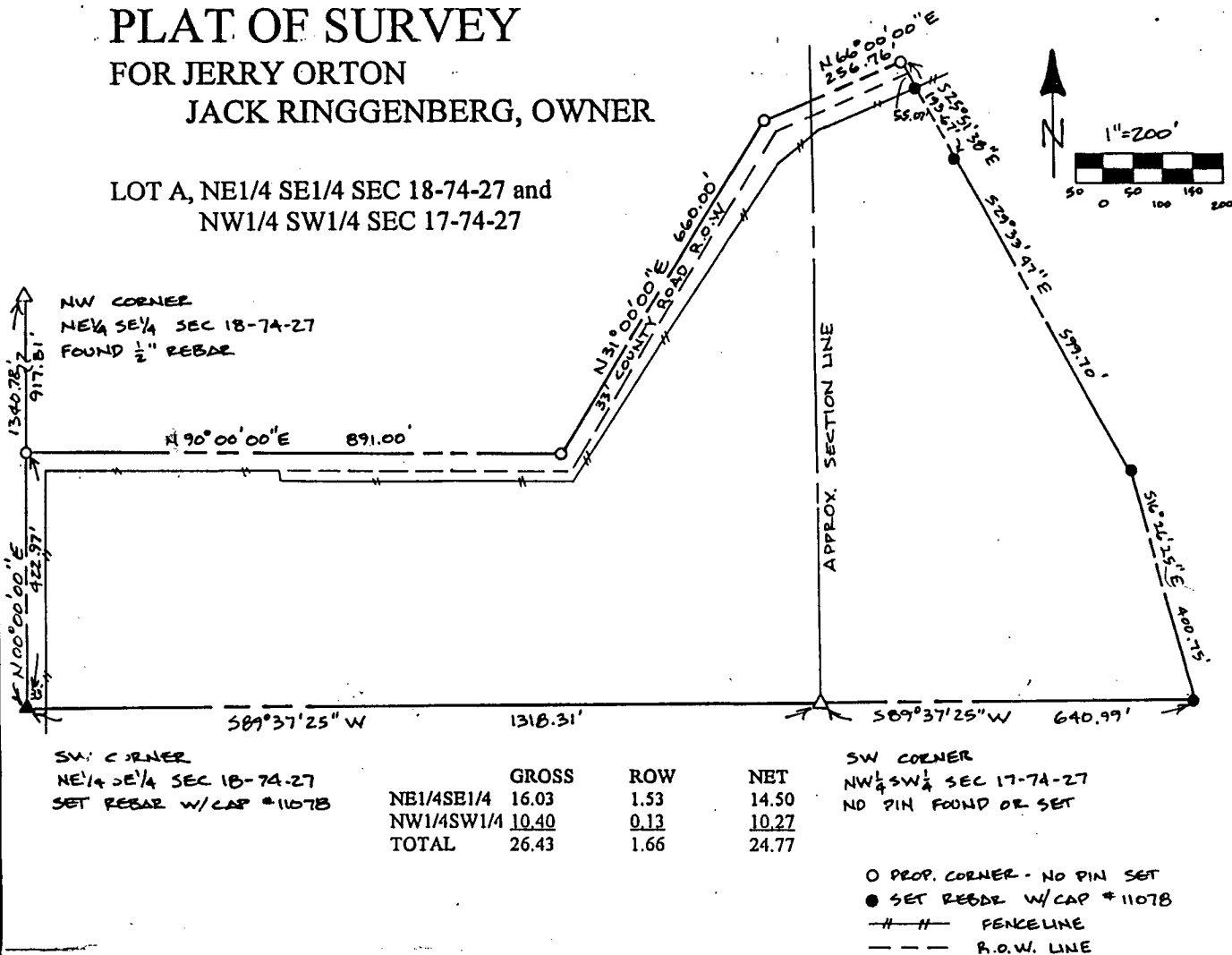


**PLAT OF SURVEY  
FOR JERRY ORTON  
JACK RINGGENBERG, OWNER**

LOT A, NE1/4 SE1/4 SEC 18-74-27 and  
NW1/4 SW1/4 SEC 17-74-27



NW CORNER  
NE1/4 SE1/4 SEC 18-74-27  
FOUND 1/2" REBAR

SW CORNER  
NE1/4 SE1/4 SEC 18-74-27  
SET REBAR W/CAP #11078

SW CORNER  
NW1/4 SW1/4 SEC 17-74-27  
NO PIN FOUND OR SET

	GROSS	ROW	NET
NE1/4SE1/4	16.03	1.53	14.50
NW1/4SW1/4	10.40	0.13	10.27
TOTAL	26.43	1.66	24.77

- PROP. CORNER - NO PIN SET
- SET REBAR W/CAP #11078
- — — FENCELINE
- - - R.O.W. LINE

A parcel of land located in the NE1/4 SE1/4 of Section 18 and the NW1/4 SW1/4 of Section 17, Township 74 North, Range 27 West of the 5th Principal Meridian, Madison County, Iowa; more particularly described as follows:

Beginning at the SW corner of said NE1/4 SE1/4 of Section 18; thence along the west line of said NE1/4 SE1/4 N00°00'00"E, a distance of 422.97 feet; thence departing said west line and along the centerline of a county road the following three courses:  
N90°00'00"E, a distance of 891.00 feet;  
N31°00'00"E, a distance of 660.00 feet;  
N66°00'00"E, a distance of 256.76 feet;  
thence departing said county road centerline S25°51'38"E, a distance of 193.67 feet;  
thence S29°33'47"E, a distance of 599.70 feet; thence S16°26'25"E, a distance of 400.75 feet to a point on the south line of said NW1/4 SW1/4 of Section 17; thence along said south line S89°37'25"W, a distance of 640.99 feet to the SW corner of said NW1/4 SW1/4 of Section 17; thence along the south line of said NE1/4 SE1/4 of Section 18 S89°37'25"W, a distance of 1318.31 feet to the Point of Beginning. Said parcel contains 26.43 acres, more or less, including 1.66 acres presently established county road right-of-way easement. Said parcel subject to all easements of record.

I hereby certify that this plat and survey were made by me or under my direct supervision and that I am a duly Registered land Surveyor and Professional Engineer under the laws of the State of Iowa.  
Signed: \_\_\_\_\_ Date: \_\_\_\_\_

*[Signature]*  
Bradley J. Skinner, P.E. & L.S. Iowa Reg. No. 11078  
FEB 10, 1993

My registration expires December 31, 1994.

FILED NO. 2097  
BOOK 2 PAGE 371  
93 FEB 22 PM 1:46  
MICHELLE UTSLER  
RECORDER  
MADISON COUNTY, IOWA  
Fee \$5.00  
COMPUTER   
RECORDED   
COMPARED

*Revised & Corrected Plat  
See Farm Plat 2 - 390  
5-12-93*