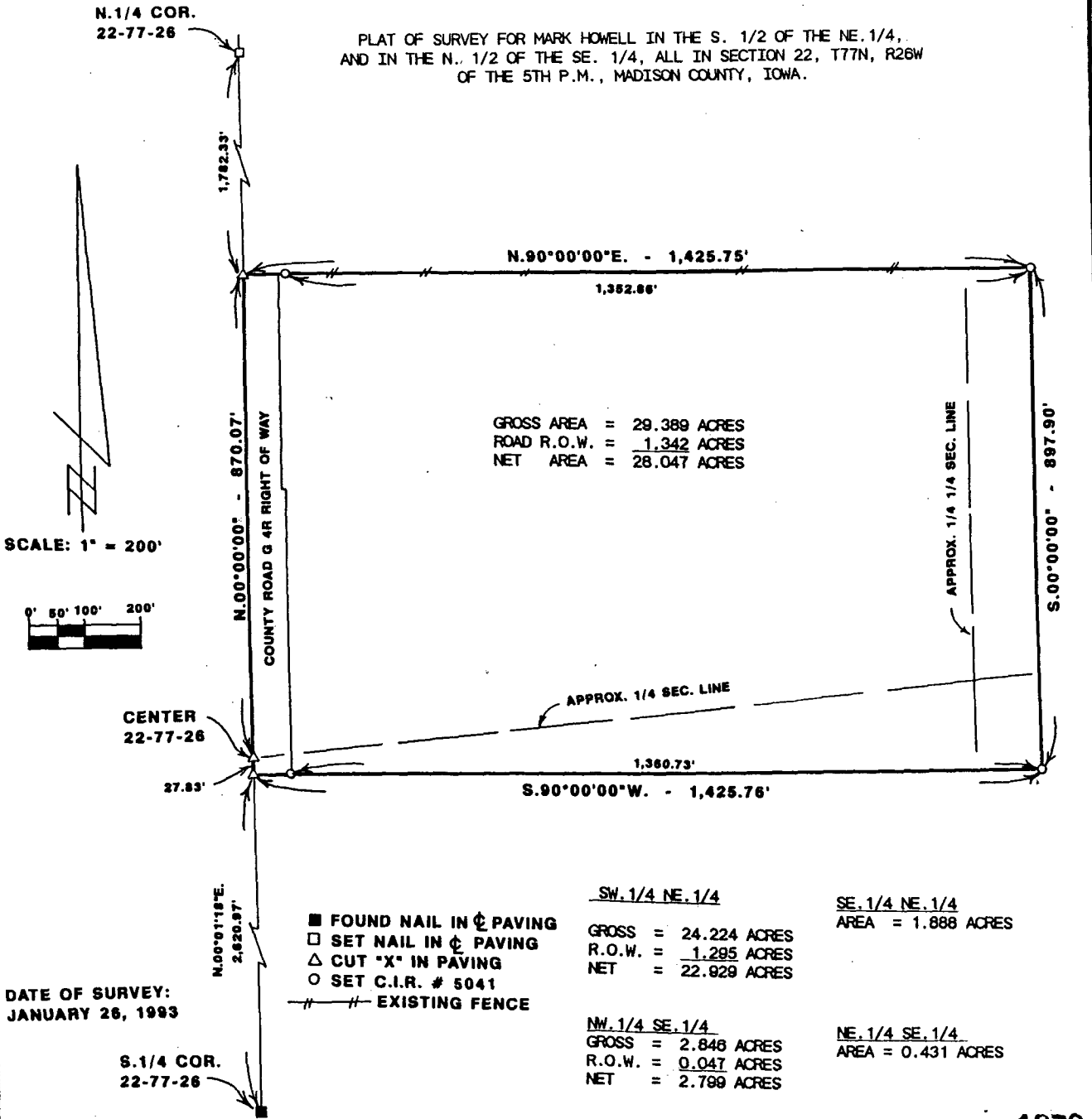
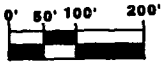


PLAT OF SURVEY FOR MARK HOWELL IN THE S. 1/2 OF THE NE. 1/4,
AND IN THE N. 1/2 OF THE SE. 1/4, ALL IN SECTION 22, T77N, R26W
OF THE 5TH P.M., MADISON COUNTY, IOWA.



GROSS AREA = 29.389 ACRES
 ROAD R.O.W. = 1.342 ACRES
 NET AREA = 28.047 ACRES

SCALE: 1" = 200'



DATE OF SURVEY:
 JANUARY 26, 1993

- FOUND NAIL IN ϕ PAVING
- SET NAIL IN ϕ PAVING
- △ CUT "X" IN PAVING
- SET C.I.R. # 5041
- — — — — EXISTING FENCE

SW. 1/4 NE. 1/4
 GROSS = 24.224 ACRES
 R.O.W. = 1.295 ACRES
 NET = 22.929 ACRES

SE. 1/4 NE. 1/4
 AREA = 1.888 ACRES

NW. 1/4 SE. 1/4
 GROSS = 2.846 ACRES
 R.O.W. = 0.047 ACRES
 NET = 2.799 ACRES

NE. 1/4 SE. 1/4
 AREA = 0.431 ACRES

COMPARED

FILED NO. 1970

BOOK 2 PAGE 366

93 FEB -5 PM 12:29

MICHELLE UTSLER
 RECORDER
 MADISON COUNTY, IOWA

Fee \$5.00

DESCRIPTION:

A parcel of land in the South Half of the Northeast Quarter, and in the North Half of the Southeast Quarter, all in Section 22, Township 77 North, Range 26 West of the 5th Principal Meridian, Madison County, Iowa more particularly described as follows:
 Beginning at the Center of Section 22, T77N, R26W of the 5th P.M., Madison County, Iowa; thence along the West line of the NE. 1/4 of said Section 22, North 00°00'00" 870.07 feet; thence North 90°00'00" East, 1,425.75 feet; thence South 00°00'00", 897.90 feet; thence South 90°00'00" West, 1425.76 feet to the West line of the SE. 1/4 of said Section 22; thence along said West line, North 00°01'18" East, 27.83 feet to the point of beginning. Said parcel of land contains 29.389 Acres including 1.342 Acres of County Road Right of Way.



I HEREBY CERTIFY THAT THIS PLAN, SPECIFICALLY THE SURVEY OR REPORT WAS MADE BY ME OR BY DIRECT PERSONAL SUPERVISION OF ME BY A DULY REGISTERED LAND SURVEYOR UNDER THE LAWS OF THE STATE OF IOWA.
 DATE

Charles T. Vance 2 Feb. 1993
 Charles T. Vance, P.E. & L.S. Iowa Reg. No. 5041

VANCE & HOCHSTETLER, P.C.
 CONSULTING ENGINEERS
 71 JEFFERSON
 WINTERSSET, IOWA 50273